

STATISTIČKI BILTEN
СТАТИСТИЧКИ БИЛТЕН
STATISTICAL BULLETIN

3

2004



Izdaje i štampa: Agencija za statistiku Bosne i Hercegovine, Bosna i Hercegovina,
Sarajevo, Trg Bosne i Hercegovine 1
Publisher: Agency for Statistics of Bosnia and Herzegovina, Bosnia and Herzegovina,
Sarajevo, Trg Bosne i Hercegovine 1
Printed by: Agency for Statistics of Bosnia and Herzegovina

Odgovara: Poslovodni odbor
Editor: Management Board

Tabele pripremili: Nora Selimović, ekspert
Jelena Miović, ekspert
Jasmina Vidović, ekspert
Milenko Stojanović, M.Sc
Sahrudin Sarajčić, M.Sc

Tables prepared by: Ms Nora Selimovic, an expert in statistics
Ms Jelena Miovic, an expert in statistics
Ms Jasmina Vidovic, an expert in statistics
Mr Milenko Stojanovic, M.Sc
Mr Sahrudin Saracic, M.Sc

Tehnički urednik: Milenko Stojanović, M.Sc
Design and pre-press: Milenko Stojanovic, M.Sc

Izrada grafika: Nora Selimović
Jasmina Vidović
Milenko Stojanović, M.Sc
Sahrudin Sarajčić, M.Sc

Graphs prepared by: Ms Hora Selimovic
Ms Jasmina Vidovic
Mr Milenko Stojanovic, M.Sc
Mr Sahrudin Sarajcic, M.Sc

Molimo korisnike Biltena da pri likom potrebe podataka navedu izvor

Users are kindly requested to mention data source

BOSNA I HERCEGOVINA

BOSNIA AND HERZEGOVINA

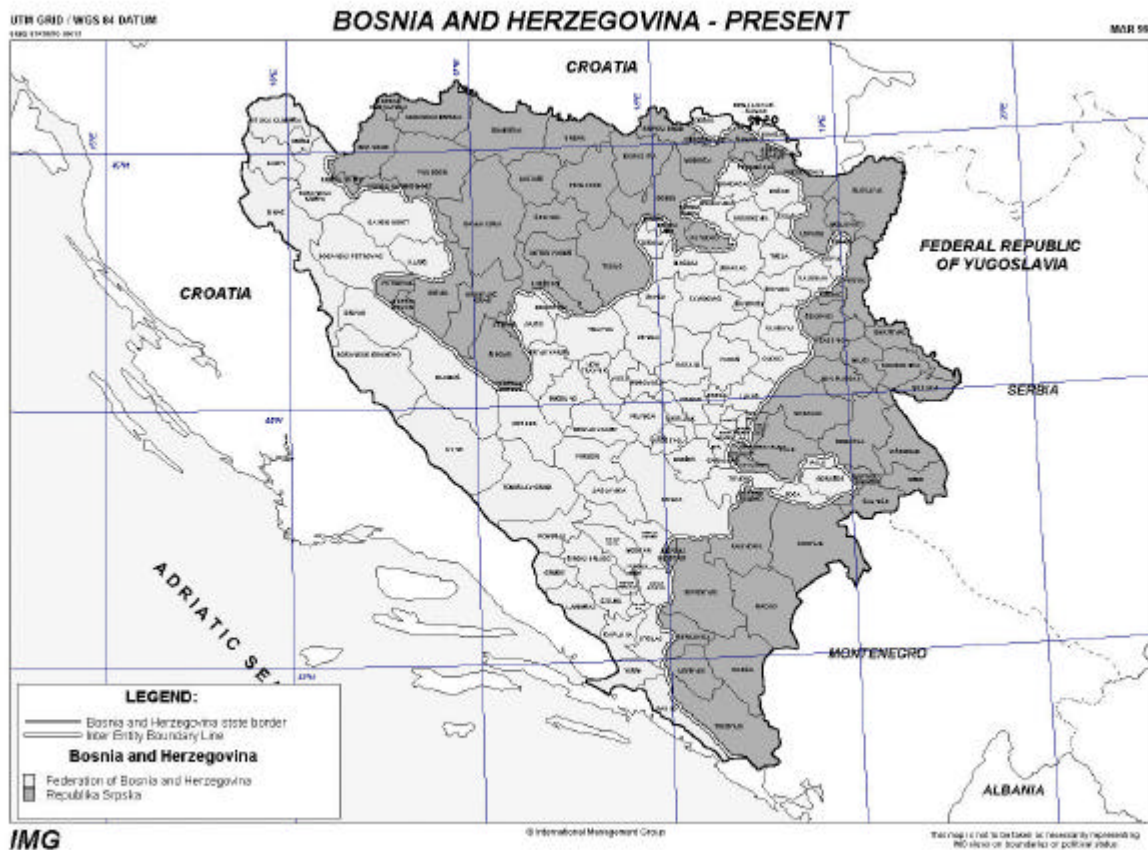
AGENCIJA ZA STATISTIKU BOSNE I HERCEGOVINE

AGENCY FOR STATISTICS OF BOSNIA AND HERZEGOVINA

STATISTICKI BILTEN 3

STATISTICAL BULLETIN

Sarajevo, maj/svibanj 2004. godine



*) Objavljeno uz suglasnost International Management Group / Published with agreeable to International Management Group

OPŠTI PODACI O BOSNI I HERCEGOVINI

Službeni naziv: Bosna i Hercegovina (B i H)

Geografska lokacija: Bosna i Hercegovina se nalazi na zapadnom dijelu Balkanskog poluotoka

Pogranične zemlje: SR Jugoslavija na istoku, Republika Hrvatska na sjeveru, zapadu i jugu.

Administrativna podjela: BiH je podjeljena na dva entiteta: Federaciju Bosne i Hercegovine (F BiH) i Republiku Srpsku (RS) i distrikt Brcko.

Entitetska struktura: FBiH je administrativno podjeljena na 10 kantona-Županija. Kantoni-Županije su podjeljeni na opštine. Na području F BiH je 79 opština. Republika Srpska je administrativno podjeljena na 64 opštine. Grad Brcko je zasebna administrativna jedinica - Distrikt.

Površina:

Bosna i Hercegovina ukupno pokriva

	51 209,2 km ²
Kopno	51 197 km ²
More	12,2 km ²

Klima: Pretežno kontinentalna, mediteranska na jugu

Broj stanovnika: Procjena prisutnog stanovništva (30.06.2003) 3.832.301

Struktura stanovnika: Bošwaci, Hrvati i Srbi i pripadnici ostalih naroda

Glavni grad: Sarajevo (F BiH-Sarajevo, RS-Banja Luka)

Službeni jezici: Bosanski, Hrvatski i Srpski (bosanski, i hrvatski se pišu latinicnim pismom, a srpski se piše ćirilicnim pismom).

Zvanična valuta: Konvertibilna marka (KM), (1KM = 1 DM)

GENERAL DATA ABOUT BOSNIA AND HERZEGOVINA

Official name: Bosnia and Herzegovina (BiH)

Geographical location: Bosnia and Herzegovina is situated in the west part of the Balkan Peninsula

Border countries: SR of Yugoslavia on the east, Republic of Croatia on the north, west and south

Administrative distribution: B&H is divided on two entities: Federation of Bosnia and Herzegovina (F B&H) and Republica Srpska (RS) and district Brcko

Entity's structure: FB&H is administratively divided on 10 cantons/districts. These cantons/districts are divided into municipalities. There are 84 municipalities in Fed. BiH. The Republika Srpska is administratively divided into 64 municipalities. The city Brcko is a separated administrative unit -District.

Surface: Bosnia and Herzegovina cover totally

	51 209,2 km ²
Land	51 197 km ²
Inland	12,2 km ²

Climate: In the majority continental, mediterranean on south

Number of habitants: Estimation of current population (30.06.2001) 3.683.665

The structure of population: Muslims, Croats, Serbs and other participants of others nations

Capital city: Sarajevo (FB&H-Sarajevo, RS-Banja Luka)

Official languages: Bosnian, Croatian and Serbian (Bosnian, and Croatian are written on Alphabet, and Serbian are written on Cyrillic).

Official value: Konvertible mark (KM), (1KM = 1 DM)

S A D R Ź A J
C O N T E N T S

	Str.
	Page
U V O D	11
<i>INTRODUCTION</i>	
SKRACENICE I ZNAKOVI	14
<i>ABBREVIATIONS AND SYMBOLS</i>	
1.PLATE	15
<i>WAGES</i>	
2. ŠUMARSTVO	22
<i>FORESTRY</i>	
3. GRAĐEVINARSTVO	55
<i>CONSTRUCTION.</i>	
4. PREVOZ I VEZE	71
<i>TRANSPORT AND COMMUNICATIONS</i>	
5. TURIZAM I UGOSTITELJSTVO	93
<i>TOURISM, HOTELS AND RESTAURANTS</i>	
6. STANOVNIŠTVO	109
<i>POPULATION</i>	
7. TRGOVINA	115
<i>TRADE</i>	

SADRŽAJ TABELA I GRAFOVA CONTENTS TABLES AND GRAPHICS

	<i>Strana Page</i>
1. PLATE	
<i>NJAGES</i>	
1-1.1. Prosječne bruto plate u KM (BiH)	18
<i>Average gross njages in KM (B&H)</i>	
1-1.2. Prosječne neto plate u KM (BiH)	18
<i>Average net njages in KM (B&H)</i>	
1 – Grafikon 1: Prosječne bruto plate za 1998-2003	18
<i>Graph 1: Average gross njages 1998-2000 and I-IX 2001</i>	
Grafikon 2: Prosječne neto plate za 1998-2003	19
<i>Graph 2: Average net njages 1998-2000 and I-IX 2001</i>	
2.ŠUMARSTVO	
<i>FORESTRY</i>	
2-1.1. Proizvodnja, prodaja i zalihe šumskih proizvoda prema asortimanu (BiH) .	24
<i>Production, sales and stocks forests products by type (B&H)</i>	
2-1.2. Indeksi proizvodnje šumskih proizvoda prema asortimanu (BiH)	30
<i>Indices of production of forests assortments</i>	
1 – Grafikon 1: Ukupna proizvodnja šumskih sortimenata u BiH	33
<i>Graph 1: Total production of forest assortments in BiH</i>	
2-2.1. Proizvodnja, prodaja i zalihe šumskih proizvoda prema asortimanu (Fed)	34
<i>Production, sales and stocks forests products by type (Fed)</i>	
2-2.2. Indeksi proizvodnje šumskih proizvoda prema asortimanu (Fed BiH)	40
<i>Indices of production of forests assortments</i>	
Grafikon 2: Ukupna proizvodnja šumskih sortimenata u Fed BiH.....	43
<i>Graph 2: Total production of forest assortments in Fed BiH</i>	
2-3.1. Proizvodnja, prodaja i zalihe šumskih proizvoda prema asortimanu (RS).....	44
<i>Production, sales and stocks forests products by type (RS)</i>	
2-3.2. Indeksi proizvodnje šumskih proizvoda prema asortimanu (RS)	50
<i>Indices of production of forests assortments</i>	
Grafikon 3: Ukupna proizvodnja šumskih sortimenata u RS.....	53
<i>Graph 3: Total production of forest assortments in RS</i>	
3. GRAĐEVINARSTVO	
<i>CONSTRUCTION</i>	
3-1.1. Indeks vrijednosti izvršenih građevinskih radova, izvršeni efektivni sati i broj radnika (BiH)	58
<i>Indices of value of completed construction njorks, completed effective hours and workers (B&H)</i>	
3 – Grafikon 1: Broj radnika na gradilištima BiH.....	58
<i>Graph 1: Number of employees on constr.site BiH</i>	
Grafikon 2: Vrijednost izvršenih građevinskih radova u BiH.....	59
<i>Graph 2: Value of employees njork BiH</i>	
3-1.2. Vrijednost izvršenih građevinskih radova, izvršeni efektivni sati i broj radnika (BiH)	60
<i>Value of completed construction njorks, completed effective hours and workers (B&H)</i>	
3- 2.1.Vrijednost izvršenih građevinskih radova, izvršeni efektivni sati i broj radnika (Fed)	61
<i>Value of completed construction njorks, completed effective hours and workers (Fed)</i>	
3- 2.2. Indeks vrijednosti izvršenih građevinskih radova, izvršeni efektivni sati i broj radnika (Fed)	62
<i>Indices of value of completed construction njorks, completed effective hours and workers (Fed)</i>	
Grafikon 3: Broj radnika na gradilištima Fed BiH.....	62
<i>Graph 3: Number of employees on constr.site Fed BiH</i>	
Grafikon 4: Vrijednost izvršenih građevinskih radova u Fed BiH.....	63
<i>Graph 4: Value of employees njork Fed BiH</i>	
3- 3.1. Indeks vrijednosti izvršenih građevinskih radova, izvršeni efektivni sati i broj radnika (RS)	64
<i>Indices of value of completed construction njorks, completed effective hours and workers (RS)</i>	
Grafikon 5: Broj radnika na gradilištima RS.....	64
<i>Graph 5: Number of employees on constr.site RS</i>	
Grafikon 6: Vrijednost izvršenih građevinskih radova u RS.....	65
<i>Graph 6: Value of employees njork RS</i>	
3-3.2. Vrijednost izvršenih građevinskih radova, izvršeni efektivni sati i broj radnika (RS)	66
<i>Value of completed construction njorks, completed effective hours and njorkers (RS)</i>	
3-4.1. Vrijednost izvršenih građevinskih radova, izvršeni efektivni sati i broj radnika (Distrikt Brčko)	67
<i>Value of completed construction njorks, completed effective hours and workers (District Brcko)</i>	
3-4.2. Indeks vrijednosti izvršenih građevinskih radova, izvršeni efektivni sati i broj radnika (Distrikt Brčko)	68
<i>Indices of value of completed construction works, completed effective hours and workers (District Brcko)</i>	
Grafikon 7: Broj radnika na gradilištima RS.....	68
<i>Graph 7: Number of employees on constr.site RS</i>	
Grafikon 8: Vrijednost izvršenih građevinskih radova u RS.....	69
<i>Graph 8: Value of employees work RS</i>	

4. PREVOZ I VEZE

TRANSPORT AND COMMUNICATION

4 – 1.1. Drumski, gradski i željeznički prevoz i veze (BiH)	74
<i>Highway, urban and railway transport and communication services (B&H)</i>	
4 – 1.2. Indeksi u saobraćaju (BiH)	78
<i>Indices of highway, urban and railway transport and communication services (B&H)</i>	
4 – 2.1. Drumski, gradski i željeznički prevoz i veze (Fed)	80
<i>Highway, urban and railway transport and communication services (Fed)</i>	
4 – 2.2. Indeksi u saobraćaju (Fed)	84
<i>Indices of highway, urban and railway transport and communication services (Fed)</i>	
4 – 3.1. Drumski, gradski i željeznički prevoz i veze (RS)	86
<i>Highway, urban and railway transport and communication services (RS)</i>	
4 – 3.2. Indeksi u saobraćaju (RS)	91
<i>Indices of highway, urban and railway transport and communication services (RS)</i>	

5. TURIZAM I UGOSTITELJSTVO

TOURISM, HOTELS AND RESTAURANTS

5 – 1.1. Dolasci turista po zemlji prebivališta (BiH).....	96
<i>Tourist arrivals by country of residence (B&H)</i>	
5 - Grafikon 1: Dolasci turista BiH.....	97
<i>Graph 1: Tourist arrivals B&H</i>	
5 – 1.2. Nocenja turista po zemlji prebivališta (BiH).....	98
<i>Tourist night by country of residence (B&H)</i>	
Grafikon 2: Nocenja turista BiH.....	99
<i>Graph 2: Number of tourist nights BiH</i>	
5 – 2.1. Dolasci turista po zemlji prebivališta (Fed).....	100
<i>Tourist arrivals by country of residence (Fed)</i>	
Grafikon 3: Dolasci turista Fed BiH.....	101
<i>Graph 3: Tourist arrivals Fed B&H</i>	
5 – 2.2. Nocenja turista po zemlji prebivališta (Fed).....	102
<i>Tourist night by country of residence (Fed)</i>	
Grafikon 4: Nocenja turista Fed BiH.....	103
<i>Graph 4: Number of tourist nights Fed BiH</i>	
5 – 3.1. Dolasci turista po zemlji prebivališta (RS).....	104
<i>Tourist arrivals by country of residence (RS)</i>	
Grafikon 5: Dolasci turista RS.....	105
<i>Graph 5: Tourist arrivals RS</i>	
5 – 3.2. Nocenja turista po zemlji prebivališta (RS).....	106
<i>Tourist night by country of residence (RS)</i>	
Grafikon 6: Nocenja turista RS.....	107
<i>Graph 6: Number of tourist nights RS</i>	

6. STANOVNIŠTVO

POPULATION

6 – 1.1. Prirodno kretanje stanovništva po mjesecima (BiH) – prethodni podaci	112
<i>Natural demographic trends (B&H) – previous dates</i>	
6 – 2.1. Prirodno kretanje stanovništva po mjesecima (Fed) – prethodni podaci.....	112
<i>Natural demographic trends (Fed) – previous dates</i>	
6 – 3.1. Prirodno kretanje stanovništva po mjesecima (RS) – prethodni podaci.....	113
<i>Natural demographic trends (RS) – previous dates</i>	

7. TRGOVINA
TRADE

7 – 1.1 Robni promet BiH sa inostranstvom, Izvoz-uvoz za period I-III 2004 godine	120
<i>Goods transactions of BiH with the rest of the world, export-import for I-III 2004</i>	
7 – 1.2 Robni promet BiH sa inostranstvom, Izvoz-uvoz po zemljama namjene/porijekla za I-III 2004 godine	120
<i>Goods transactions of BiH with the rest of the world, export-import by countries of origin for I-III 2004</i>	
7 - Grafikon 1: Pregled strukture učešća zemalja u izvozu BiH, I-III 2004.....	121
<i>Graph 1: Review of structure shares of countries in export BiH, I-III 2004</i>	
Grafikon 2: Obim robne razmjene BiH sa glavnim trgovinskim partnerima.	121
<i>Graph 2: Volume of merchandise trade of BiH with main trade partners, I-III 2004</i>	
7 – 1.3 Pregled robnog prometa BiH sa inostranstvom u periodu 1997-2003.....	122
<i>Review of goods transactions of BiH with the rest of the world 1997-2003</i>	
7 – 2.1 Robni promet FBiH sa inostranstvom, Izvoz-uvoz za period I-III 2004 godine	124
<i>Goods transactions of Federation BiH with the rest of the world, export-import for I-IX 2001</i>	
7 – 2.2 Robni promet FBiH sa inostranstvom, Izvoz-uvoz po zemljama namjene/porijekla za I-III 2004 godine	124
<i>Goods transactions of Federation BiH with the rest of the world, export-import by countries of origin for I-III 2004</i>	
7 – 2.3 Struktura robnog prometa FBiH sa inostranstvom, I-III 2004 godine	124
<i>Structure of merchandise trade F BiH, for I-III 2004</i>	
Grafikon 3: Pregled strukture učešća zemalja u izvozu F BiH.....	125
<i>Graph 1: Review of structure shares of countries in export F BiH</i>	
Grafikon 4: Obim robne razmjene F BiH sa glavnim trgovinskim partnerima	125
<i>Graph 2: Volume of merchandise trade F BiH with main trade partners</i>	
7 – 3.1 Robni promet RS sa inostranstvom, Izvoz-uvoz za period I-III 2004 godine	126
<i>Goods transactions of Republic Srpska with the rest of the world, export-import for I-III 2004</i>	
7 – 3.2 Robni promet RS sa inostranstvom, Izvoz-uvoz po zemljama namjene/porijekla za I-III 2004 godine	126
<i>Goods transactions of Republic Srpska with the rest of the world, export-import by countries of origin for I-III 2004</i>	
7 – 3.3 Struktura robnog prometa RS sa inostranstvom, I-III 2004 godine	126
<i>Structure of merchandise trade RS, for I-III 2004</i>	
Grafikon 5: Pregled strukture učešća zemalja u izvozu RS.....	127
<i>Graph 5: Review of structure shares of countries in export F BiH</i>	
Grafikon 6: Obim robne razmjene RS sa glavnim trgovinskim partnerima	127
<i>Graph 6: Volume of merchandise trade RS with main trade partners</i>	

U V O D
INTRODUCTION

U V O D

Podaci za BiH publikovani u ovom Biltenu predstavljaju realizaciju Plana rada Agencije za statistiku Bosne i Hercegovine koji je usvojen na 11-oj sjednici Vijeća ministara BiH od 14.05.2003. godine, i usklađen je sa programima statističkih istraživanja Federalnog zavoda za statistiku Federacije BiH i republickog zavoda za statistiku Republike Srpske i zahtjevima ministarstava u sklopu Vijeća ministara i Centralne banke BiH.

Prema Zakonu o statistici BiH ("Službeni glasnik BiH", broj 34/2002) Agencija za statistiku BiH nadležna je da u skladu sa međunarodno prihvaćenom metodologijom izrađuje i objavljuje statističke podatke za Bosnu i Hercegovinu, a na osnovu podataka zavoda za statistiku entiteta, distrikta Brčko i drugih institucija na nivou BiH.

Za ovu publikaciju Agencija za statistiku BiH obezbijedila je podatke za one oblasti statističkih istraživanja koja se provode po istoj metodologiji. Aktivnosti na usklađivanju metodologija za druge oblasti statističkih istraživanja su trajan zadatak Agencije i zavoda za statistiku entiteta, distrikta Brčko i drugih institucija.

U narednom periodu bit ćemo u mogućnosti da publikujemo podatke za više oblasti jer se stvaraju uslovi za to (priprema sprovođenja ankete o budžetu domaćinstva i dr.).

Sve sugestije korisnika statističkih podataka koje vode daljem poboljšanju ove publikacije sa zadovoljstvom ćemo prihvatiti.

Sarajevo. Maj 2004.

POSLOVODNI ODBOR

INTRODUCTION

The data for B&H published in this Bulletin represent the implementation results of the Working Plan of the Agency for Statistics of Bosnia and Herzegovina, which was accepted at the 11th session of the Council of Ministers of B&H, dated on May 14 2002 and harmonised with the programs of the Federation of B&H and of the Republika Srpska Statistical Offices, as well as with requirements of Council of Ministers of B&H and Central Bank of B&H.

According to the Statistical Law of Bosnia and Herzegovina (“Official Gazette B&H”, number 34/2002) the Agency of Statistics of Bosnia and Herzegovina is in charge “of the production and publishing, of aggregated statistics for Bosnia and Herzegovina in accordance with the International accepted methodology, based on data submitted by the Entity Statistical Institutes”.

For this publication the Agency for Statistics of Bosnia and Herzegovina provides data for statistical areas in which the same methodology has been used. The harmonisation of methodologies of other statistical areas is the lengthy task of this Agency and of the Statistical Institutes of the Entities, as well as Statistical Office of District Brcko and other institutions.

Soon we will be able to publish data on some more areas of statistics, because current situation is providing good conditions for doing so (preparations for carrying out the households budget survey has already started, as well as some other activities).

All suggestions by users of statistical data, which lead to further improvement of this publication, will be gratefully accepted.

Sarajevo, May 2004.

MANAGEMENT BOARD

SKRACENICE I ZNAKOVI

U statistickim tabelama primjenjani su slijedeći znakovi:

-	nema pojave
...	ne raspolaže se podatkom
0	podatak je manji od 0,5 od date jedinice mjere
()	nepotpun, nedovoljno provjeren, odnosno procijenjen podatak
*	ispravljen podatak
<i>F</i>	prosjeak
AV	prosjeak
1)	oznaka za napomenu ispod tabele
Δ	promjena
(BiH)	statisticki podaci na nivou Bosne i Hercegovine
(Fed)	statisticki podaci na nivou Federacije
(RS)	statisticki podaci na nivou Republike Srpske
CV	koeficijent varijacije
KM	konvertibilna marka, zvani~na valuta u BiH
JKD	Jugoslovenska klasifikacija ekonomskih aktivnosti
EUROSTAT	Statisticki ured Evropske Unije
CIF	(<i>Cost, Insurance, Freight</i>) troškovi, osiguranje, prevoz-vrijednost za uvoz
FOB	(<i>Free On Board</i>) franko do broda-vrijednost za izvoz
SITC	(<i>Standard International Trade Classification</i>) standardna medunarodna klasifikacija trgovine
USD	americki dolar

ABBREVIATIONS AND SYMBOLS

In statistical tables we have following signs

-	no entry
...	data not available
0	value is less than 0,5 of the unit of measure being used
()	uncomplete, not reliable, estimated data
*	corrected data
<i>F</i>	average
AV	average
1)	indicates note beneath table
Δ	change
(BiH)	state level statistics
(Fed)	Federation level statistics
(RS)	Republic Srpska level statistics
CV	coefficient of variation
KM	convertible currency (mark), official currency of B&H
JKD	Yugoslavian classification of economic activities

1 PLATE
WAGES

STATISTIKA RADA

Metodološka objašnjenja

Cilj statistike zaposlenosti, nezaposlenosti i plata, koja je važna oblast društvene statistike, je da pruži informacije o tržištu rada i odgovarajućim pitanjima putem administrativnih informacija, pojedinačnih intervjua ili drugih načina putem kojih će se dobiti informacije o ovoj materiji.

Cilj statistike rada je da prikupi podatke o radnom stanovništvu (15 godina i više) i da ih razvrsta u **tri uzajamno isključive grupe**: zaposlene osobe, nezaposlene osobe i neaktivne osobe. Ukrštanjem drugih informacija (ukupan broj stanovništva, starost, pol, prethodni posao, naredni posao itd), zajedno sa ovim moguće je napraviti interesantne (zajedničke) indikatore. Dobar primjer je Evropska Anketa radne snage, koju provode zemlje članice EU i koju koordinira EUROSTAT od 1973.

Definicije zaposlenosti i nezaposlenosti korištene u zemljama EU, u skladu su sa usvojenim na 13. Međunarodnoj konferenciji statističara rada koja je održana u Ženevi 1982. godine.

PLATE

Metodološka objašnjenja

Prosječne mjesečne bruto i neto plate po zaposlenom dobijene su na osnovu mjesečnog statističkog istraživanja o zaposlenima i platama. Prema metodologiji koja se koristi u BiH nema razlike između poslodavca i zaposlenih radnika. Podaci o bruto i neto platama su dostupni. U podacima o prosječnoj bruto i neto plati nisu obuhvaćene isplate zaposlenih u Ministarstvu odbrane i Ministarstvu unutrašnjih poslova.

Mjesečna neto plata obuhvata plate zaposlenih za izvršene poslove na osnovu redovnog radnog odnosa i naknada za godišnji odmor, bolovanja do 30 dana, državnih praznika, plaćenog dopusta, cekanja i zastoja bez krivnje zaposlenog. Nisu obuhvaćena primanja koja terete materijalne troškove, naknade za bolovanja preko 30 dana i primanja na osnovu ugovora o djelu.

Mjesečna bruto plata obuhvata sve vrste neto isplata na osnovu radnog odnosa i zakonom propisanih obaveznih izdvajanja, doprinosa i poreza.

Prosječna bruto i neto plata po zaposlenom, izračunava se dijeljenjem ukupnih isplata sa brojem zaposlenih koji su primili platu.

Ovdje postoji jedna **specifična poteškoca**: velike su neredovnosti u isplatama, a statistika podrazumjeva plaćanja u mjesecu, a ne mjesečno ugovorene, uobičajene ili prosječne plate. To znači da u toku jednog mjeseca, na primjer, jedna osoba nije primila ni jednu KM, a u narednom mjesecu ta osoba može primiti i dvije plate.

STATISTICS ON LABOUR FORCE

The objective of statistics on employment and wages, an important branch of social statistics, is to provide information on the labour market and related issues by means of administrative data, personal interviews or other relevant sources of data.

The main statistical objective of the Labour Force data is to divide the population of working age (15 years and above) into three mutually exclusive groups: persons in employment, persons unemployed and inactive persons. Within these groups other characteristics (total population, age, sex, previous job, second job, etc) are identified to provide key indicators. The European Labour Force Survey for example, has been carried out by the Member States of the EU and co-ordinated by EUROSTAT since 1973.

The definitions of employment and unemployment used in EU countries, closely follow those adopted by the 13th International Conference of Labour Statisticians, in 1982.

WAGES

Notes on Methodology

Data on average monthly gross and net salaries (wages) were obtained on the basis of monthly reports of the enterprises and not enterprises. According to the methodology currently used in B&H, there is no distinction made between employers and employees. Data related to net wages and gross wages are available. Data related to net and gross salaries, including wages of the employers in the Ministry of Defence and the Ministry of Foreign Affairs, are not.

Net monthly earning includes the income of a person in employment earned for work during regular working hours and some additional income, annual leave, sick pay up to 30 days, public holidays, paid leave, redundancy and work curtailment payments which are involuntary and non prejudicial.

Gross monthly earning includes all kinds of the net payments derived from on permanent employment plus participation, co-payments, contributions and taxes, as prescribed by law.

Average net and gross earning per one person in employment are calculated by dividing the total of payments by the number of persons in paid employment.

One principal difficulty exists: there is great irregularity in payment while the statistics reflect pay in each individual month and not monthly contractual, usual or average salaries. This means that in one month, for instance, one person may receive zero KM and in the next month twice his normal salary.

NIVO OBRADJE BOSNA I HERCEGOVINA

1 - 1.1 Prosječne bruto plate

	I-2004	II-2004	III-2004	F 1998	F 1999	F 2000	F 2001	F 2002	F 2003
RS	599	618	616	256	314	387	444	528	612
FBiH	750	752	759	507	551	626	652	710	773
BiH	734	733	732	454	503	541	652	660	733

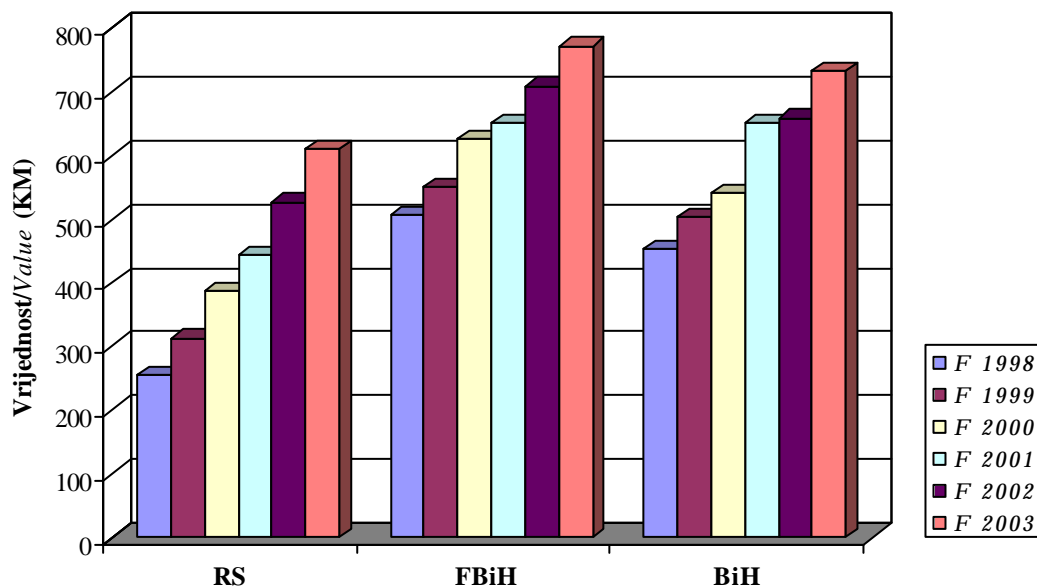
1 - 1.2 Prosječne neto plate

	I-2004	II-2004	III-2004	F 1998	F 1999	F 2000	F 2001	F 2002	F 2003
RS	394	406	405	170	216	277	309	347	402
FBiH	510	512	516	329	374	414	443	483	526
BiH	496	495	494	296	343	374	443	446	495

Grafikon 1:

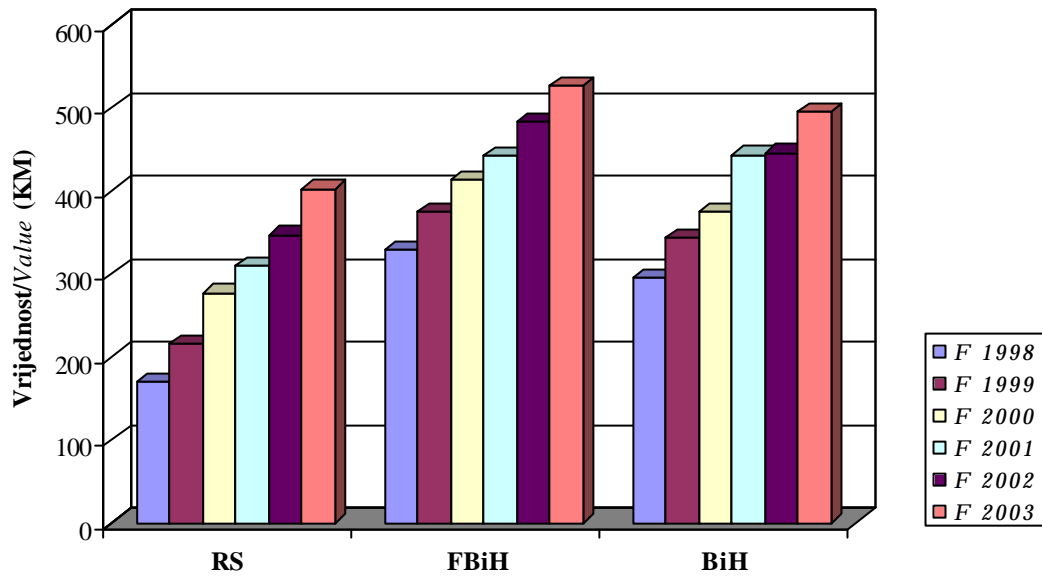
Graph 1:

Prosječne bruto plate za 1998-2003 godinu
Average gross wages 1998-2003



Grafikon 2:
Graph 2:

Prosječne neto place za 1998-2003 godinu
Average net wages 1998-2003



2. ŠUMARSTVO
FORESTRY

ŠUMARSTVO

Metodološka objašnjenja

Podaci o proizvodnji, prodaji i zalihama šumskih sortimenata, obrađeni u ovom biltenu, urađeni su na osnovu rezultata obrade entitetskih zavoda za statistiku iz redovnog mjesečnog istraživanja. Mjesečne izvještaje podnose sva preduzeća koja se bave stalnom proizvodnjom šumskih sortimenata iz šuma u državnom vlasništvu, bez obzira da li im je iskorištavanje šuma osnovna ili sporedna djelatnost.

Stoga je podacima obuhvaćena samo proizvodnja, prodaja i zalihe šumskih sortimenata iz državnih šuma, dok sortimenti proizvedeni iz šuma na koje postoji pravo vlasništva nisu uključeni.

Podaci se daju na osnovu izvršenog premjera šumskih sortimenata. iskazane količine predstavljaju neto drvenu masu sortimenta izraženu u kubnim metrima.

Industrijsko drvo je ono drvo koje ima povoljna fizička i hemijska svojstva za daljnju industrijsku upotrebu i preradu. Industrijsko drvo razvrstava se u dvije grupe: industrijsko drvo za mehaničku preradu (trupci, drvo za ploče i sl.) i industrijsko drvo za hemijsku preradu (celulozno drvo, drvo za suhu destilaciju i sl.).

Tehničko drvo namijenjeno je za razne tehničke svrhe (rudničko drvo, stubovi za elektro i telefonske vodove i sl.), te njegova fizička i hemijska svojstva upravo odgovaraju toj namjeni.

Orevno drvo je namijenjeno neposredno za ogrev ili proizvodnju drvenog uglja.

FORESTRY

Notes on Methodology

Data on production, sales and stock of forestry products in this bulletin were prepared from regular monthly surveys processed by the entity statistical offices.

All companies engaged in permanent production of forestry items from state forests submit monthly statistical reports regardless of whether the exploitation of forests is a basic or a secondary activity for them.

Therefore, this data covers only production, sales and stock of forestry products from state forests, while forestry products, which are produced by private forestry, are not included.

Quantities are given in net wood of mass product which are measured in cubic metres.

Industrial wood is one whose properties allow for further industrial use and processing.

Industrial wood is classified into two groups: industrial wood for mechanical processing (trunks, wood for plates etc.) and industrial wood for chemical processing (cellulose fibre, wood for dry distillation).

Technical wood is for other technical uses (mining timbers, poles for electric and telephone cables), and its physical and chemical features are appropriate to these uses.

The fuel wood is for burning or the production of charcoal.

NIVO OBRADJE BOSNA I HERCEGOVINA

2 - 1.1 Proizvodnja, prodaja i zalihe šumskih proizvoda prema asortimanu

PROIZVODNJA	m ³					
	01 2003	02 2003	03 2003	04 2003	05 2003	06 2003
UKUPNO	122.859	155.072	307.135	346.393	365.958	419.049
CETINJACA	63.971	67.960	134.638	166.695	191.405	231.797
LISTACA	58.888	87.112	172.454	179.540	174.454	187.199
Trupci cetinjaca	55.552	58.509	113.823	138.310	153.555	185.196
Rudnicko drvo cetinjaca	6.086	5.979	11.736	14.550	18.243	22.501
Ostalo dugo drvo cetinjaca	121	154	1.347	3.710	5.154	6.994
Prostorno drvo cetinjaca	1.682	2.583	6.902	8.317	12.120	15.042
Trupci listaca	33.680	49.430	94.847	85.984	74.939	78.075
Rudnicko drvo listaca	1.119	1.584	2.643	2.083	1.242	1.395
Ostalo dugo drvo listaca	1.256	2.174	2.949	3.362	2.851	2.587
Prostorno drvo listaca	672	972	2.182	2.362	4.484	2.561
Ogrijevno drvo cetinjaca	530	735	830	1.808	2.325	2.057
Ogrijevno drvo listaca	22.039	32.534	69.156	85.368	90.798	102.512
Ostalo grubo obradeno drvo	122	418	720	539	247	129

Napomena: Podaci za 2002 i 2003 godinu, pored podataka za entitete, sadrže i podatke za Brcko Distrikt

Note: Data for 2002 and 2003 includes data for Republic of Srpska, Federation of B&H and Brcko District

2 - 1.1 Production, sales and stocks of forest products by type

m3

07 2003	08 2003	09 2003	10 2003	11 2003	12 2003	PRODUCTION
445.573	419.323	482.337	436.847	363.074	236.247	TOTAL
247.052	201.779	206.564	196.484	142.591	79.579	CONIFEROUS
198.338	217.457	275.730	240.281	220.480	156.619	BROAD LEAF
198.486	159.197	159.437	156.656	109.536	60.975	Logs Coniferous
22.022	18.148	17.190	16.104	11.931	6.735	Mining wood, coniferous
7.869	7.302	11.772	9.521	6.985	3.716	Other long coniferous wood
15.611	14.189	14.892	11.130	10.998	6.258	Cord coniferous wood
74.307	72.897	89.047	83.934	93.197	68.596	Logs broadleaf
622	924	1.457	1.395	2.749	859	Mining wood, broadleaf
3.873	3.197	4.425	2.735	2.779	3.059	Other long broadleaf wood
1.500	1.358	1.272	1.919	2.564	2.090	Cord broadleaf wood
3.064	2.932	3.270	3.069	3.138	1.894	Coniferous firewood
118.036	139.081	179.358	150.069	118.578	81.119	Broadleaf firewood
183	98	217	315	619	946	Other roughly worked wood

NIVO OBRADJE BOSNA I HERCEGOVINA

**2 - 1.1 Proizvodnja, prodaja i zalihe šumskih proizvoda prema asortimanu
(nastavak)**

PRODAJA	m3					
	01 2003	02 2003	03 2003	04 2003	05 2003	06 2003
UKUPNO	98.001	129.758	257.186	342.302	388.162	421.493
CETINJACA	47.389	56.915	121.082	173.954	195.874	210.532
LISTACA	50.602	72.843	136.034	168.139	191.850	210.556
Trupci cetinjaca	43.224	52.019	106.473	148.356	157.747	166.814
Rudnicko drvo cetinjaca	2.648	2.874	7.908	13.118	17.169	16.182
Ostalo dugo drvo cetinjaca	317	467	1.337	3.105	3.778	6.258
Prostorno drvo cetinjaca	999	996	4.580	7.967	15.247	19.577
Trupci listaca	31.641	46.304	83.410	88.503	87.894	83.458
Rudnicko drvo listaca	534	380	1.420	1.486	1.487	1.484
Ostalo dugo drvo listaca	378	668	2.049	2.287	3.631	3.245
Prostorno drvo listaca	451	1.272	2.849	3.321	3.647	3.134
Ogrijevno drvo cetinjaca	201	559	784	1.408	1.925	1.694
Ogrijevno drvo listaca	17.598	24.179	45.828	71.944	94.965	118.952
Ostalo grubo obradeno drvo	10	40	548	807	672	695

Napomena: Podaci za 2002 i 2003 godinu, pored podataka za entitete, sadrže i podatke za Brcko Distrikt

Note: Data for 2002 and 2003 includes data for Republic of Srpska, Federation of B&H and Brcko District

2 - 1.1 Production, sales and stocks of forest products by type
(continued)

PRODAJA	m ³					
	01 2003	02 2003	03 2003	04 2003	05 2003	06 2003
UKUPNO	98.001	129.758	257.186	342.302	388.162	421.493
CETINJACA	47.389	56.915	121.082	173.954	195.874	210.532
LISTACA	50.602	72.843	136.034	168.139	191.850	210.556
Trupci cetinjaca	43.224	52.019	106.473	148.356	157.747	166.814
Rudnicko drvo cetinjaca	2.648	2.874	7.908	13.118	17.169	16.182
Ostalo dugo drvo cetinjaca	317	467	1.337	3.105	3.778	6.258
Prostorno drvo cetinjaca	999	996	4.580	7.967	15.247	19.577
Trupci listaca	31.641	46.304	83.410	88.503	87.894	83.458
Rudnicko drvo listaca	534	380	1.420	1.486	1.487	1.484
Ostalo dugo drvo listaca	378	668	2.049	2.287	3.631	3.245
Prostorno drvo listaca	451	1.272	2.849	3.321	3.647	3.134
Ogrijevno drvo cetinjaca	201	559	784	1.408	1.925	1.694
Ogrijevno drvo listaca	17.598	24.179	45.828	71.944	94.965	118.952
Ostalo grubo obradeno drvo	10	40	548	807	672	695

Napomena: Podaci za 2002 i 2003 godinu, pored podataka za entitete, sadrže i podatke za Brčko Distrikt
 Note: Data for 2002 and 2003 includes data for Republic of Srpska, Federation of B&H and Brčko District

NIVO OBRADJE BOSNA I HERCEGOVINA

**2 - 1.1 Proizvodnja, prodaja i zalihe šumskih proizvoda prema asortimanu
(nastavak)**

ZALIHE	m3					
	01 2003	02 2003	03 2003	04 2003	05 2003	06 2003
UKUPNO	460.730	451.184	489.068	475.023	444.140	400.451
CETINJACA	171.244	171.206	178.401	160.527	150.422	151.688
LISTACA	289.486	279.978	310.667	314.496	293.718	248.763
Trupci cetinjaca	90.677	87.098	90.618	70.298	62.517	67.981
Rudnicko drvo cetinjaca	33.132	35.257	35.578	33.438	32.112	32.100
Ostalo dugo drvo cetinjaca	2.059	1.332	866	1.025	926	2.744
Prostorno drvo cetinjaca	37.167	39.378	44.990	47.294	46.501	40.278
Trupci listaca	71.555	57.247	68.370	62.369	49.223	37.729
Rudnicko drvo listaca	2.730	3.597	4.310	4.389	3.230	3.497
Ostalo dugo drvo listaca	4.021	5.336	5.818	6.038	4.611	3.793
Prostorno drvo listaca	5.270	4.885	5.424	4.979	6.376	7.457
Ogrijevno drvo cetinjaca	8.209	8.141	6.349	8.472	8.366	8.585
Ogrijevno drvo listaca	205.779	208.404	226.037	236.231	229.873	196.097
Ostalo grubo obradeno drvo	131	509	708	491	405	190

Napomena: Podaci za 2002 i 2003 godinu, pored podataka za entitete, sadrže i podatke za Brcko Distrikt

Note: Data for 2002 and 2003 includes data for Republic of Srpska, Federation of B&H and Brcko District

2 - 1.1 Production, sales and stocks of forest products by type
(continued)

						m3
07 2003	08 2003	09 2003	10 2003	11 2003	12 2003	STOCKS
358.780	333.896	480.444	301.705	319.238	323.843	TOTAL
144.888	135.209	201.471	124.422	116.784	105.548	CONIFEROUS
213.894	198.687	277.973	177.283	202.454	218.295	BROAD LEAF
63.202	56.248	130.708	56.543	55.862	50.215	Logs Coniferous
33.037	30.754	29.280	26.132	24.758	21.236	Mining wood, coniferous
2.674	2.089	12.637	3.086	2.427	2.460	Other long coniferous wood
37.267	37.577	26.843	31.274	26.669	24.916	Cord coniferous wood
34.076	38.088	72.071	43.066	52.243	48.729	Logs broadleaf
3.950	3.857	3.221	2.882	3.003	3.313	Mining wood, broadleaf
3.835	2.809	2.233	2.131	2.085	2.570	Other long broadleaf wood
3.263	2.545	2.474	1.703	2.230	1.773	Cord broadleaf wood
8.708	8.541	3.003	7.387	7.068	6.721	Coniferous firewood
168.762	151.380	198.928	127.493	142.550	161.260	Broadleaf firewood
8	8	46	8	343	650	Other roughly worked wood

NIVO OBRADJE BOSNA I HERCEGOVINA

2 - 1.2 Indeksi proizvodnje šumskih proizvoda prema asortimanu
Indices of production of forest assortments

m3

PROIZVODNJA	2001 2000	2002 2001	2003 2002	PRODUCTION
UKUPNO	89,21	110,98	96,74	TOTAL
CETINJACA	93,67	102,12	91,58	CONIFEROUS
LISTACA	84,45	121,41	101,84	BROAD LEAF
Trupci cetinjaca	91,90	102,81	90,54	Logs Coniferous
Rudnicko drvo cetinjaca	95,98	89,62	86,94	Mining wood, coniferous
Ostalo dugo drvo cetinjaca	163,80	146,28	119,19	Other long coniferous wood
Prostorno drvo cetinjaca	93,45	97,88	103,80	Cord coniferous wood
Trupci listaca	81,50	107,41	96,59	Logs broadleaf
Rudnicko drvo listaca	70,20	96,04	103,96	Mining wood, broadleaf
Ostalo dugo drvo listaca	410,37	309,85	94,83	Other long broadleaf wood
Prostorno drvo listaca	48,29	77,75	134,62	Cord broadleaf wood
Ogrijevno drvo cetinjaca	193,73	120,75	85,15	Coniferous firewood
Ogrijevno drvo listaca	89,17	134,97	105,54	Broadleaf firewood
Ostalo grubo obradeno drvo	16,57	126,30	535,65	Other roughly worked wood

Napomena: Podaci za 2002 i 2003 godinu, pored podataka za entitete, sadrže i podatke za Brcko Distrikt

Note: Data for 2002 and 2003 includes data for Republic of Srpska, Federation of B&H and Brcko District

NIVO OBRADJE BOSNA I HERCEGOVINA

2 - 1.2 Indeksi proizvodnje šumskih proizvoda prema asortimanu
Indices of production of forest assortments

m3

PRODAJA	<u>2001</u> 2000	<u>2002</u> 2001	<u>2003</u> 2002	SALES
UKUPNO	88,40	115,11	97,17	TOTAL
CETINJACA	89,82	107,80	90,90	CONIFEROUS
LISTACA	86,76	123,54	103,42	BROAD LEAF
Trupci cetinjaca	87,69	106,88	90,90	Logs Coniferous
Rudnicko drvo cetinjaca	95,39	94,69	85,13	Mining wood, coniferous
Ostalo dugo drvo cetinjaca	104,64	250,12	114,91	Other long coniferous wood
Prostorno drvo cetinjaca	104,81	110,60	86,23	Cord coniferous wood
Trupci listaca	81,63	109,95	97,87	Logs broadleaf
Rudnicko drvo listaca	94,73	114,70	115,13	Mining wood, broadleaf
Ostalo dugo drvo listaca	402,55	310,76	94,48	Other long broadleaf wood
Prostorno drvo listaca	42,80	103,62	160,39	Cord broadleaf wood
Ogrijevno drvo cetinjaca	158,35	111,82	112,41	Coniferous firewood
Ogrijevno drvo listaca	93,69	134,93	106,72	Broadleaf firewood
Ostalo grubo obradeno drvo	13,41	192,74	345,79	Other roughly worked wood

Napomena: Podaci za 2002 i 2003 godinu, pored podataka za entitete, sadrže i podatke za Brcko Distrikt
 Note: Data for 2002 and 2003 includes data for Republic of Srpska, Federation of B&H and Brcko District

NIVO OBRADE BOSNA I HERCEGOVINA

2 - 1.2 Indeksi proizvodnje šumskih proizvoda prema asortimanu
Indices of production of forest assortments

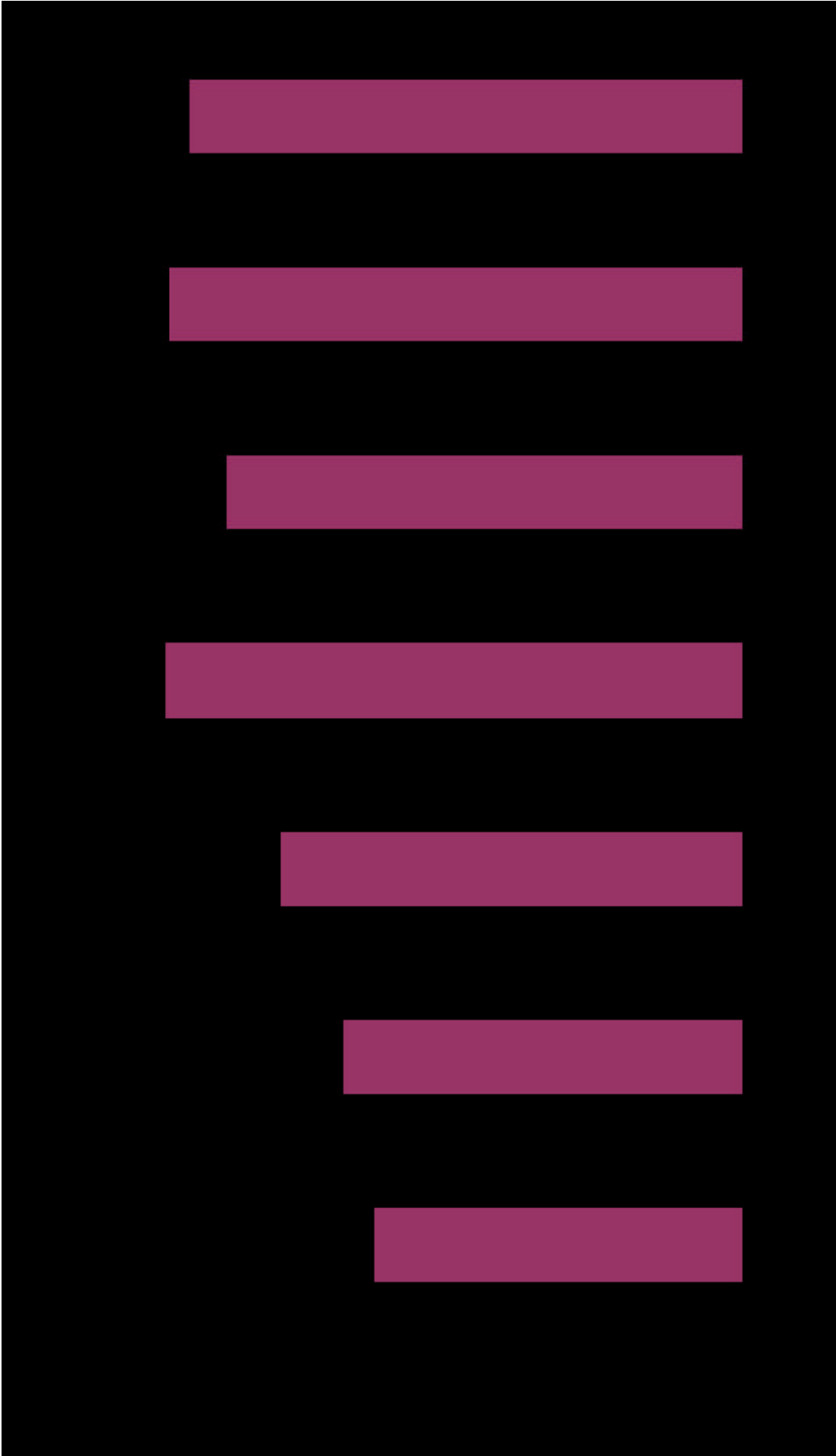
m3

ZALIHE	F 2001 F 2000	F 2002 F 2001	F 2003 F 2002	STOCKS
UKUPNO	116,64	99,60	74,86	TOTAL
CETINJACA	106,34	89,51	72,07	CONIFEROUS
LISTACA	125,95	107,30	76,61	BROAD LEAF
Trupci cetinjaca	100,96	89,12	67,05	Logs Coniferous
Rudnicko drvo cetinjaca	107,60	71,37	65,11	Mining wood, coniferous
Ostalo dugo drvo cetinjaca	162,89	228,91	83,12	Other long coniferous wood
Prostorno drvo cetinjaca	120,62	106,22	87,24	Cord coniferous wood
Trupci listaca	102,25	93,54	77,48	Logs broadleaf
Rudnicko drvo listaca	154,94	63,04	82,14	Mining wood, broadleaf
Ostalo dugo drvo listaca	1717,94	122,54	111,85	Other long broadleaf wood
Prostorno drvo listaca	104,76	48,94	89,89	Cord broadleaf wood
Ogrijevno drvo cetinjaca	124,52	177,44	100,11	Coniferous firewood
Ogrijevno drvo listaca	135,37	115,65	75,48	Broadleaf firewood
Ostalo grubo obradeno drvo	19,10	11,84	-	Other roughly worked wood

Napomena: Podaci za 2002 i 2003 godinu, pored podataka za entitete, sadrže i podatke za Brcko Distrikt

Note: Data for 2002 and 2003 includes data for Republic of Srpska, Federation of B&H and Brcko District

Grafikon 1:
Graph 1:



NIVO OBRADNE FEDERACIJA BOSNE I HERCEGOVINE

2 - 2.1 Proizvodnja, prodaja i zalihe šumskih proizvoda prema asortimanu

PROIZVODNJA	m3					
	01 2003	02 2003	03 2003	04 2003	05 2003	06 2003
UKUPNO	79.878	87.578	152.147	206.414	212.742	249.137
CETINJACA	39.567	38.653	68.459	112.827	121.078	141.765
LISTACA	40.311	48.925	83.645	93.429	91.565	107.319
Trupci cetinjaca	34.856	33.765	58.447	95.827	97.919	113.846
Rudnicko drvo cetinjaca	3.791	3.508	6.045	8.872	10.814	12.938
Ostalo dugo drvo cetinjaca	79	121	567	2.577	3.831	5.785
Prostorno drvo cetinjaca	311	544	2.731	4.068	6.374	7.372
Trupci listaca	24.592	30.185	48.417	46.830	39.549	42.580
Rudnicko drvo listaca	499	940	1.553	1.257	569	464
Ostalo dugo drvo listaca	0	1	1	0	1	10
Prostorno drvo listaca	362	777	1.670	1.255	1.200	1.383
Ogrijevno drvo cetinjaca	530	715	669	1.483	2.140	1.824
Ogrijevno drvo listaca	14.858	17.022	32.004	44.087	50.246	62.882
Ostalo grubo obradeno drvo	0	0	43	158	99	53

2 - 2.1 Production, sales and stocks of forest products by type

m3

07 2003	08 2003	09 2003	10 2003	11 2003	12 2003	PRODUCTION
269.320	235.594	262.702	242.404	182.677	130.887	TOTAL
157.157	116.421	123.279	113.765	75.699	48.888	CONIFEROUS
111.980	119.086	139.380	128.557	106.975	81.950	BROAD LEAF
126.559	91.376	94.674	89.692	57.561	37.666	Logs Coniferous
13.345	10.268	10.105	9.172	5.864	3.687	Mining wood, coniferous
6.537	5.739	9.712	7.701	5.049	2.943	Other long coniferous wood
7.935	6.344	5.702	4.326	4.201	2.799	Cord coniferous wood
38.704	37.453	43.737	46.186	48.461	38.160	Logs broadleaf
0	575	1.054	1.264	972	578	Mining wood, broadleaf
2	6	24	42	42	17	Other long broadleaf wood
994	850	777	1.144	1.548	1.530	Cord broadleaf wood
2.781	2.694	3.086	2.874	3.024	1.793	Coniferous firewood
72.280	80.202	93.788	79.921	55.952	41.665	Broadleaf firewood
183	87	43	82	3	49	Other roughly worked wood

2 - 2.1 Proizvodnja, prodaja i zalihe šumskih proizvoda prema asortimanu (nastavak)

PRODAJA	m ³					
	01 2003	02 2003	03 2003	04 2003	05 2003	06 2003
UKUPNO	70.207	81.602	142.286	193.685	217.655	244.941
CETINJACA	35.636	38.396	66.560	104.438	117.010	132.626
LISTACA	34.561	43.206	75.656	89.038	100.207	111.910
Trupci cetinjaca	32.485	34.890	58.441	90.163	93.037	103.545
Rudnicko drvo cetinjaca	2.099	1.953	4.669	7.414	9.614	10.251
Ostalo dugo drvo cetinjaca	275	402	573	1.936	2.473	4.998
Prostorno drvo cetinjaca	576	623	2.274	3.871	10.153	12.437
Trupci listaca	22.436	28.195	44.487	47.544	45.550	40.666
Rudnicko drvo listaca	373	128	899	942	455	353
Ostalo dugo drvo listaca	0	1	6	10	1	2
Prostorno drvo listaca	266	397	2.085	1.345	1.685	1.409
Ogrijevno drvo cetinjaca	201	528	603	1.054	1.733	1.395
Ogrijevno drvo listaca	11.486	14.485	28.179	39.197	52.516	69.480
Ostalo grubo obradeno drvo	10	0	70	209	438	405

2 - 2.1 Production, sales and stocks of forest products by type
(continued)

						m3
07 2003	08 2003	09 2003	10 2003	11 2003	12 2003	SALES
272.969	251.944	279.427	235.863	192.365	131.689	<i>TOTAL</i>
147.702	125.451	129.742	116.431	89.204	59.492	<i>CONIFEROUS</i>
124.800	125.947	148.951	118.754	102.959	72.090	<i>BROAD LEAF</i>
118.849	97.250	101.394	91.285	62.828	44.703	<i>Logs Coniferous</i>
11.277	9.661	9.195	8.023	5.753	4.201	<i>Mining wood, coniferous</i>
6.102	5.609	8.895	6.403	9.205	4.892	<i>Other long coniferous wood</i>
9.075	10.331	7.495	8.000	8.907	3.970	<i>Cord coniferous wood</i>
41.265	34.541	42.798	40.471	44.118	37.863	<i>Logs broadleaf</i>
436	361	907	877	506	369	<i>Mining wood, broadleaf</i>
0	0	24	42	20	16	<i>Other long broadleaf wood</i>
2.628	1.393	1.133	887	1.147	2.384	<i>Cord broadleaf wood</i>
2.399	2.600	2.763	2.720	2.511	1.726	<i>Coniferous firewood</i>
80.471	89.653	104.088	76.477	57.168	31.458	<i>Broadleaf firewood</i>
467	546	734	678	202	107	<i>Other roughly worked wood</i>

**2 - 2.1 Proizvodnja, prodaja i zalihe šumskih proizvoda prema asortimanu
(nastavak)**

ZALIHE	m3					
	01 2003	02 2003	03 2003	04 2003	05 2003	06 2003
UKUPNO	170.450	140.154	137.729	132.365	118.779	118.705
CETINJACA	71.071	58.998	54.535	52.309	49.975	53.128
LISTACA	99.379	81.156	83.194	80.056	68.804	65.577
Trupci cetinjaca	39.489	27.760	23.279	18.006	18.000	20.201
Rudnicko drvo cetinjaca	13.673	13.895	12.407	11.512	10.826	11.502
Ostalo dugo drvo cetinjaca	1.593	897	407	590	443	566
Prostorno drvo cetinjaca	8.119	8.312	12.101	13.739	12.343	12.277
Trupci listaca	35.231	19.336	22.291	17.731	10.986	11.006
Rudnicko drvo listaca	902	1.371	1.517	1.315	784	1.253
Ostalo dugo drvo listaca	0	0	0	0	0	0
Prostorno drvo listaca	116	191	624	474	276	657
Ogrijevno drvo cetinjaca	8.197	8.134	6.341	8.462	8.363	8.582
Ogrijevno drvo listaca	63.130	60.258	58.762	60.536	56.758	52.661
Ostalo grubo obradeno drvo	0	0	0	0	0	0

2 - 2.1 Production, sales and stocks of forest products by type
(continued)

						m3
07 2003	08 2003	09 2003	10 2003	11 2003	12 2003	STOCKS
102.577	96.605	263.000	89.138	97.153	103.800	TOTAL
51.787	47.582	123.000	41.599	37.876	35.786	CONIFEROUS
50.790	49.023	139.000	47.539	59.277	68.014	BROAD LEAF
20.040	17.490	95.000	15.365	15.968	14.650	Logs Coniferous
11.399	9.758	10.000	8.137	7.584	6.083	Mining wood, coniferous
243	66	10.000	1	2	0	Other long coniferous wood
11.400	11.730	6.000	10.709	7.254	8.332	Cord coniferous wood
9.320	11.244	44.000	13.945	17.090	15.889	Logs broadleaf
1.441	1.379	1.000	1.548	1.885	2.287	Mining wood, broadleaf
0	0	0	0	0	0	Other long broadleaf wood
786	464	1.000	564	757	607	Cord broadleaf wood
8.705	8.538	3.000	7.387	7.068	6.721	Coniferous firewood
39.243	35.936	94.000	31.482	39.545	49.231	Broadleaf firewood
0	0	0	0	0	0	Other roughly worked wood

2 - 2.2 Indeksi proizvodnje šumskih proizvoda prema asortimanu
Indices of production of forest assortments

m3

PROIZVODNJA	2001 2000	2002 2001	2003 2002	PRODUCTION
UKUPNO	91,25	112,15	100,34	TOTAL
CETINJACA	98,79	105,57	94,12	CONIFEROUS
LISTACA	82,93	120,76	107,46	BROAD LEAF
Trupci cetinjaca	96,28	103,75	92,06	Logs Coniferous
Rudnicko drvo cetinjaca	95,57	100,95	87,38	Mining wood, coniferous
Ostalo dugo drvo cetinjaca	204,99	94,33	167,84	Other long coniferous wood
Prostorno drvo cetinjaca	122,89	182,90	115,21	Cord coniferous wood
Trupci listaca	77,90	104,51	103,82	Logs broadleaf
Rudnicko drvo listaca	65,39	95,35	107,95	Mining wood, broadleaf
Ostalo dugo drvo listaca	10,04	410,57	13,42	Other long broadleaf wood
Prostorno drvo listaca	84,52	102,24	129,29	Cord broadleaf wood
Ogrijevno drvo cetinjaca	183,02	140,34	82,51	Coniferous firewood
Ogrijevno drvo listaca	90,00	138,81	110,14	Broadleaf firewood
Ostalo grubo obradeno drvo	25,27	171,27	105,68	Other roughly worked wood

2 - 2.2 Indeksi proizvodnje šumskih proizvoda prema asortimanu
Indices of production of forest assortments

PRODAJA	2001	2002	2003	SALES
	2000	2001	2002	
UKUPNO	90,57	115,30	101,27	TOTAL
CETINJACA	94,87	109,10	95,58	CONIFEROUS
LISTACA	85,51	123,18	107,57	BROAD LEAF
Trupci cetinjaca	92,42	105,63	93,53	Logs Coniferous
Rudnicko drvo cetinjaca	92,77	113,11	85,50	Mining wood, coniferous
Ostalo dugo drvo cetinjaca	117,28	160,08	173,61	Other long coniferous wood
Prostorno drvo cetinjaca	162,79	140,49	100,66	Cord coniferous wood
Trupci listaca	77,47	106,21	107,48	Logs broadleaf
Rudnicko drvo listaca	119,51	106,32	133,13	Mining wood, broadleaf
Ostalo dugo drvo listaca	14,70	343,27	10,39	Other long broadleaf wood
Prostorno drvo listaca	93,55	98,17	170,06	Cord broadleaf wood
Ogrijevno drvo cetinjaca	155,45	125,01	113,12	Coniferous firewood
Ogrijevno drvo listaca	94,60	139,64	106,62	Broadleaf firewood
Ostalo grubo obradeno drvo	14,85	234,99	199,90	Other roughly worked wood

m3

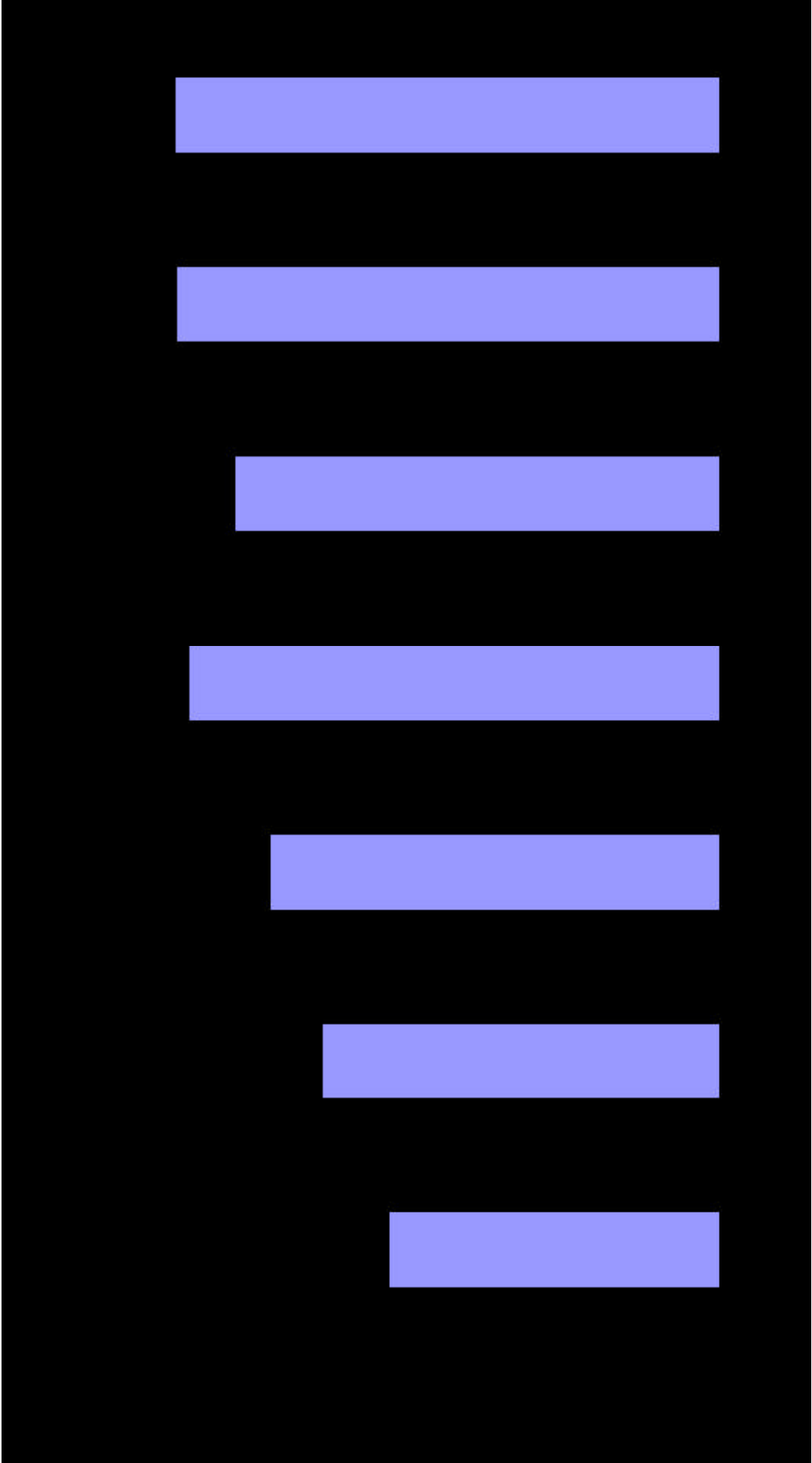
NIVO OBRADJE FEDERACIJA BOSNE I HERCEGOVINE
Data processing - Level Fed B&H

2 - 2.2 Indeksi proizvodnje šumskih proizvoda prema asortimanu
Indices of production of forest assortments

m3

ZALIHE	F 2001 F 2000	F 2002 F 2001	F 2003 F 2002	STOCKS
UKUPNO	168,97	116,12	69,87	TOTAL
CETINJACA	165,09	105,90	70,22	CONIFEROUS
LISTACA	172,58	125,20	69,53	BROAD LEAF
Trupci cetinjaca	183,58	108,32	59,85	Logs Coniferous
Rudnicko drvo cetinjaca	112,41	78,76	66,31	Mining wood, coniferous
Ostalo dugo drvo cetinjaca	-	146,80	198,93	Other long coniferous wood
Prostorno drvo cetinjaca	417,69	119,93	85,33	Cord coniferous wood
Trupci listaca	126,06	135,45	71,41	Logs broadleaf
Rudnicko drvo listaca	135,84	71,86	96,82	Mining wood, broadleaf
Ostalo dugo drvo listaca	-	-	-	Other long broadleaf wood
Prostorno drvo listaca	81,77	87,95	84,25	Cord broadleaf wood
Ogrijevno drvo cetinjaca	123,70	188,69	112,48	Coniferous firewood
Ogrijevno drvo listaca	200,66	124,13	68,38	Broadleaf firewood
Ostalo grubo obradeno drvo	-	-	-	Other roughly worked wood

Grafikon 3:
Graph 2:



2 - 3.1 Proizvodnja, prodaja i zalihe šumskih proizvoda prema asortimanu

PROIZVODNJA	m3					
	01 2003	02 2003	03 2003	04 2003	05 2003	06 2003
UKUPNO	42.981	67.308	154.691	139.193	152.829	169.134
CETINJACA	24.404	29.307	66.179	53.868	70.327	90.032
LISTACA	18.577	38.001	88.512	85.325	82.502	79.102
Trupci cetinjaca	20.696	24.744	55.376	42.483	55.636	71.350
Rudnicko drvo cetinjaca	2.295	2.471	5.691	5.678	7.429	9.563
Ostalo dugo drvo cetinjaca	42	33	780	1.133	1.323	1.209
Prostorno drvo cetinjaca	1.371	2.039	4.171	4.249	5.746	7.670
Trupci listaca	9.088	19.190	46.133	38.776	35.181	35.120
Rudnicko drvo listaca	620	644	1.090	826	673	931
Ostalo dugo drvo listaca	1.256	2.173	2.948	3.362	2.850	2.577
Prostorno drvo listaca	310	195	512	1.107	3.284	1.178
Ogrijevno drvo cetinjaca	0	20	161	325	185	233
Ogrijevno drvo listaca	7.181	15.381	37.152	40.873	40.374	39.227
Ostalo grubo obradeno drvo	122	418	677	381	148	76

2 - 3.1 Production, sales and stocks forests products by type

m3

07 2003	08 2003	09 2003	10 2003	11 2003	12 2003	PRODUCTION
175.944	183.441	219.591	193.780	179.762	104.967	TOTAL
89.891	85.358	83.285	82.719	66.892	30.650	CONIFEROUS
86.053	98.083	136.306	111.061	112.870	74.317	BROAD LEAF
71.923	67.821	64.763	66.964	51.975	23.268	Logs Coniferous
8.677	7.880	7.085	6.932	6.067	3.048	Mining wood, coniferous
1.332	1.563	2.060	1.820	1.936	773	Other long coniferous wood
7.676	7.845	9.190	6.804	6.797	3.459	Cord coniferous wood
35.559	35.404	45.287	37.460	44.488	30.320	Logs broadleaf
622	349	403	131	1.777	281	Mining wood, broadleaf
3.871	3.191	4.401	2.693	2.737	3.042	Other long broadleaf wood
506	508	495	775	1.016	560	Cord broadleaf wood
283	238	184	195	114	101	Coniferous firewood
45.495	58.631	85.549	69.773	62.239	39.218	Broadleaf firewood
0	11	174	233	616	897	Other roughly worked wood

2 - 3.1 Proizvodnja, prodaja i zalihe šumskih proizvoda prema asortimanu (nastavak)

PRODAJA	m3					
	01 2003	02 2003	03 2003	04 2003	05 2003	06 2003
UKUPNO	27.606	47.932	114.342	147.873	170.012	175.810
CETINJACA	11.753	18.519	54.522	69.516	78.864	77.906
LISTACA	15.853	29.413	59.820	78.357	91.148	97.904
Trupci cetinjaca	10.739	17.129	48.032	58.193	64.710	63.269
Rudnicko drvo cetinjaca	549	921	3.239	5.704	7.555	5.931
Ostalo dugo drvo cetinjaca	42	65	764	1.169	1.305	1.260
Prostorno drvo cetinjaca	423	373	2.306	4.096	5.094	7.140
Trupci listaca	9.052	18.074	38.466	40.647	42.230	42.480
Rudnicko drvo listaca	161	252	521	544	1.032	1.131
Ostalo dugo drvo listaca	378	667	2.043	2.277	3.630	3.243
Prostorno drvo listaca	185	875	764	1.976	1.962	1.725
Ogrijevno drvo cetinjaca	0	31	181	354	192	299
Ogrijevno drvo listaca	6.077	9.505	17.548	32.315	42.068	49.042
Ostalo grubo obradeno drvo	0	40	478	598	234	290

2 - 3.1 Production, sales and stocks forests products by type
(continued)

						m3
07 2003	08 2003	09 2003	10 2003	11 2003	12 2003	SALES
199.191	200.964	239.030	198.309	169.960	109.992	<i>TOTAL</i>
93.303	90.129	92.414	78.500	70.447	40.812	<i>CONIFEROUS</i>
105.888	110.835	146.616	119.809	99.513	69.180	<i>BROAD LEAF</i>
77.504	72.495	69.245	62.715	53.393	29.934	<i>Logs Coniferous</i>
6.545	6.756	7.272	5.476	4.902	3.426	<i>Mining wood, coniferous</i>
1.070	1.991	1.847	1.761	2.097	970	<i>Other long coniferous wood</i>
7.896	8.619	13.845	8.315	9.920	6.340	<i>Cord coniferous wood</i>
37.248	32.784	43.388	35.655	37.699	32.283	<i>Logs broadleaf</i>
367	329	566	1.018	1.900	272	<i>Mining wood, broadleaf</i>
3.380	3.509	4.506	2.237	2.655	2.438	<i>Other long broadleaf wood</i>
1.202	672	1.218	1.210	758	801	<i>Cord broadleaf wood</i>
288	257	202	229	132	141	<i>Coniferous firewood</i>
63.509	73.541	96.781	79.445	56.223	32.797	<i>Broadleaf firewood</i>
182	11	160	248	281	590	<i>Other roughly worked wood</i>

2 - 3.1 Proizvodnja, prodaja i zalihe šumskih proizvoda prema asortimanu (nastavak)

ZALIHE	m ³					
	01 2003	02 2003	03 2003	04 2003	05 2003	06 2003
UKUPNO	289.064	309.852	350.422	341.699	324.292	280.641
CETINJACA	100.173	112.208	123.866	108.218	100.447	98.560
LISTACA	188.891	197.644	226.556	233.481	223.845	182.081
Trupci cetinjaca	51.188	59.338	67.339	52.292	44.517	47.780
Rudnicko drvo cetinjaca	19.459	21.362	23.171	21.926	21.286	20.598
Ostalo dugo drvo cetinjaca	466	435	459	435	483	2.178
Prostorno drvo cetinjaca	29.048	31.066	32.889	33.555	34.158	28.001
Trupci listaca	35.503	37.070	45.398	43.891	37.395	25.818
Rudnicko drvo listaca	1.828	2.226	2.793	3.074	2.446	2.244
Ostalo dugo drvo listaca	4.021	5.336	5.818	6.038	4.611	3.793
Prostorno drvo listaca	5.154	4.694	4.800	4.505	6.100	6.800
Ogrijevno drvo cetinjaca	12	7	8	10	3	3
Ogrijevno drvo listaca	142.254	147.809	167.039	175.483	172.888	143.236
Ostalo grubo obradeno drvo	131	509	708	491	405	190

2 - 3.1 Production, sales and stocks forests products by type
(continued)

						m3
07 2003	08 2003	09 2003	10 2003	11 2003	12 2003	STOCKS
255.313	236.635	216.924	211.887	221.366	219.276	TOTAL
93.101	87.627	78.471	82.823	78.908	69.762	CONIFEROUS
162.214	149.008	138.453	129.064	142.458	149.514	BROAD LEAF
43.162	38.758	35.708	41.178	39.894	35.565	Logs Coniferous
21.638	20.996	19.280	17.995	17.174	15.153	Mining wood, coniferous
2.431	2.023	2.637	3.085	2.425	2.460	Other long coniferous wood
25.867	25.847	20.843	20.565	19.415	16.584	Cord coniferous wood
24.067	26.205	27.563	28.493	34.573	32.321	Logs broadleaf
2.509	2.478	2.221	1.334	1.118	1.026	Mining wood, broadleaf
3.835	2.809	2.233	2.131	2.085	2.570	Other long broadleaf wood
2.477	2.081	1.474	1.139	1.473	1.166	Cord broadleaf wood
3	3	3	0	0	0	Coniferous firewood
129.318	115.427	104.916	95.959	102.866	111.781	Broadleaf firewood
8	8	46	8	343	650	Other roughly worked wood

2 - 3.2 Indeksi proizvodnje šumskih proizvoda prema asortimanu

Indices of production of forest assortments

m3

PROIZVODNJA	2001 2000	2002 2001	2003 2002	PRODUCTION
UKUPNO	86,93	108,88	92,84	TOTAL
CETINJACA	87,78	97,64	88,02	CONIFEROUS
LISTACA	86,07	120,57	96,89	BROAD LEAF
Trupci cetinjaca	86,34	101,46	88,33	Logs Coniferous
Rudnicko drvo cetinjaca	96,41	77,94	86,35	Mining wood, coniferous
Ostalo dugo drvo cetinjaca	72,42	472,53	58,19	Other long coniferous wood
Prostorno drvo cetinjaca	87,78	74,97	96,31	Cord coniferous wood
Trupci listaca	85,72	109,22	89,90	Logs broadleaf
Rudnicko drvo listaca	76,32	96,79	99,67	Mining wood, broadleaf
Ostalo dugo drvo listaca	4130,28	307,58	97,29	Other long broadleaf wood
Prostorno drvo listaca	35,89	58,01	142,20	Cord broadleaf wood
Ogrijevno drvo cetinjaca	262,44	33,08	135,30	Coniferous firewood
Ogrijevno drvo listaca	88,34	129,20	101,51	Broadleaf firewood
Ostalo grubo obradeno drvo	9,99	40,26	4035,48	Other roughly worked wood

2 - 3.2 Indeksi proizvodnje šumskih proizvoda prema asortimanu

Indices of production of forest assortments

PRODAJA	2001	2002	2003	SALES
	2000	2001	2002	
UKUPNO	86,00	114,20	92,64	<i>TOTAL</i>
CETINJACA	84,05	106,12	84,71	<i>CONIFEROUS</i>
LISTACA	88,09	122,52	99,73	<i>BROAD LEAF</i>
Trupci cetinjaca	81,74	108,66	87,27	<i>Logs Coniferous</i>
Rudnicko drvo cetinjaca	98,09	76,82	84,60	<i>Mining wood, coniferous</i>
Ostalo dugo drvo cetinjaca	71,72	633,64	51,76	<i>Other long coniferous wood</i>
Prostorno drvo cetinjaca	88,28	94,88	74,99	<i>Cord coniferous wood</i>
Trupci listaca	86,31	112,64	89,12	<i>Logs broadleaf</i>
Rudnicko drvo listaca	82,40	120,75	103,69	<i>Mining wood, broadleaf</i>
Ostalo dugo drvo listaca	3370,07	309,67	97,60	<i>Other long broadleaf wood</i>
Prostorno drvo listaca	25,56	110,40	149,71	<i>Cord broadleaf wood</i>
Ogrijevno drvo cetinjaca	170,94	59,71	106,56	<i>Coniferous firewood</i>
Ogrijevno drvo listaca	92,73	128,03	107,75	<i>Broadleaf firewood</i>
Ostalo grubo obradeno drvo	9,90	37,50	3704,76	<i>Other roughly worked wood</i>

m3

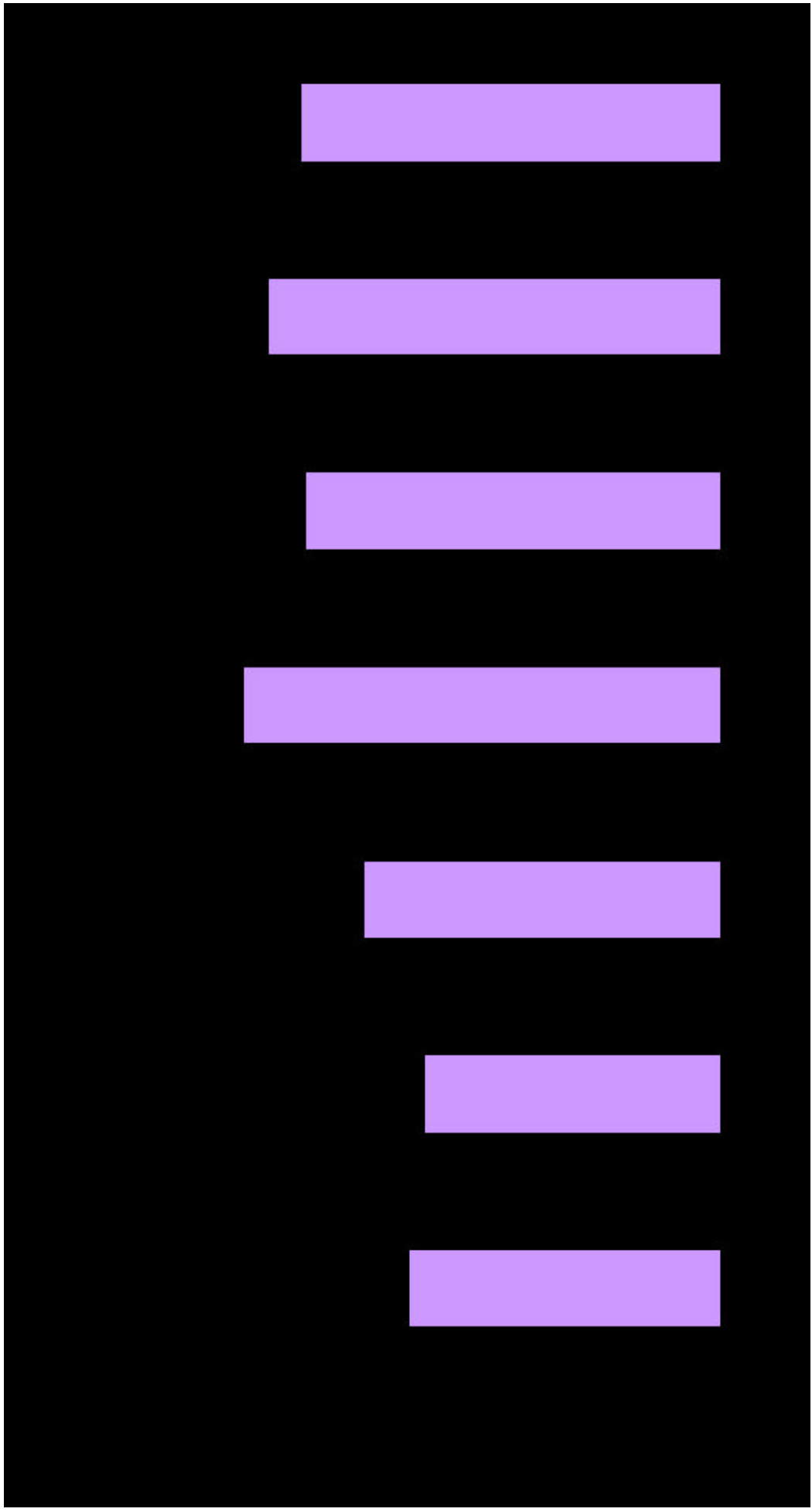
2 - 32 Indeksi proizvodnje šumskih proizvoda prema asortimanu

Indices of production of forest assortments

m3

ZALIHE	<u>F 2001</u> F 2000	<u>F 2002</u> F 2001	<u>F 2003</u> F 2002	STOCKS
UKUPNO	103,07	92,32	77,48	TOTAL
CETINJACA	90,82	81,63	73,21	CONIFEROUS
LISTACA	114,07	99,96	79,97	BROAD LEAF
Trupci cetinjaca	81,97	79,24	72,11	Logs Coniferous
Rudnicko drvo cetinjaca	105,59	68,09	64,50	Mining wood, coniferous
Ostalo dugo drvo cetinjaca	117,10	261,01	57,66	Other long coniferous wood
Prostorno drvo cetinjaca	97,34	101,60	88,00	Cord coniferous wood
Trupci listaca	95,60	77,40	80,40	Logs broadleaf
Rudnicko drvo listaca	164,66	59,34	74,68	Mining wood, broadleaf
Ostalo dugo drvo listaca	7089,27	122,54	111,85	Other long broadleaf wood
Prostorno drvo listaca	107,39	45,54	90,84	Cord broadleaf wood
Ogrijevno drvo cetinjaca	128,87	119,89	0,53	Coniferous firewood
Ogrijevno drvo listaca	119,29	111,74	78,90	Broadleaf firewood
Ostalo grubo obradeno drvo	19,10	11,84	-	Other roughly worked wood

Grafikon 3:
Graph 3:



3. GRAĐEVINARSTVO CONSTRUCTION

GRAĐEVINARSTVO

Metodološka objašnjenja

Podaci u ovom biltenu dani su na temelju obrade statističkih podataka mjesečnog izvještaja građevinarstva koji zavodima za statistiku u oba BiH entiteta dostavljaju preduzeća koja se bave građevinskim radovima.

Pod pojmom građevinski radovi obuhvaćene su djelatnosti: pripremni radovi na gradilištu (uključujući rušenje građevinskih objekata, zemljane radove i ispitivanje terena za gradnju); izgradnja objekata visokogradnje, niskogradnje i hidrogradnje (izgradnja kompletnih objekata ili njihovih dijelova, rekonstrukcija, dogradnja i održavanje objekata); svi instalacioni radovi (struja, plin, voda, grijanje, ventilacija i hlađenje); izolacioni radovi i završni građevinski radovi (fasaderski radovi, malterisanje, ugradnja stolarije, postavljanje podnih i zidnih obloga, molerski, staklarski i ostali završni radovi).

Grđevinski objekt je svaka nadzemna i podzemna gradnja kao i vodogradnja, koja u građevinskom smislu predstavlja odvojenu samostalnu cjelinu sa unaprijed određenom namjenom, a fiksirana je za određenu lokaciju.

Podaci o vrijednosti izvršenih radova računati su temeljem privremenih mjesečnih situacija i predstavljaju obracunatu vrijednost izvršenih radova, a ne vrijednost naplacenih radova. Vrijednost je data u tekucim cijenama, a iskazana je u hiljadama KM. Ovaj podatak podložan je korekcijama pri izradi konacnih obracuna.

Podatak o izvršenim efektivnim satima rada predstavlja ukupan broj sati koji su ostvarili radnici na građevinskim objektima u izvještajnom mjesecu u redovnom i prekovremenom radu, bez obzira da li su placeni po satu, normi ili akordu. U ovaj broj nisu uključeni sati rada inženjera i tehnicara.

Podatak o broju radnika odnosi se na stanje zaposlenih radnika posljednjeg dana u mjesecu na koji se podaci odnose, a ne uključuje radnike na administrativnim i inženjerko-tehničkim poslovima.

Za mjerenje promjena podataka o radnoj snazi u građevinarstvu (broj izvršenih efektivnih radnih sati i broja radnika na gradilištima) računajte su stope promjena u odnosu na prethodni mjesec za obje varijable. Podaci su računati prema slijedećoj formuli:

$$? = \{ [\text{Vrijednost (t)} - \text{Vrijednost (t-1)}] / \text{Vrijednost (t-1)} \} \times 100$$

gdje (t) predstavlja vrijednost iz tekućeg mjeseca, a (t-1) vrijednost iz prethodnog mjeseca.

CONSTRUCTION

Notes on methodology

The data in this bulletin are gathered from monthly reports on construction, which are submitted to both entity Statistics Offices by construction companies.

The term “construction works” covers the following activities: preparatory works on building sites (including demolition of construction objects, land works and area exploration for building), buildings, civil engineering and hydraulic engineering (building complete objects or their parts, reconstruction, rebuilding and maintenance of objects); all installation works (electricity, water, gas, heating, ventilation and air devices); insulation works and final construction works (façade works, plastering with mortar, joiner’s trade, installing floor and wall linings, painting, glazing and other final works).

The construction object is any above-ground, underground or aquatic building, resulting from a separate and pre-visualised plan in a pre-determined, fixed location.

Data on the value of completed works is calculated on a monthly basis and represent the estimated value of work completed, and not the construction costs incurred to date. The value is given at current prices, in thousands of convertible marks (KM). This data is subject to corrections after final calculations.

Data on effective hours completed represents the total number of hours that workers have spent on the building sites in a given month in regular and overtime work, independently of whether they are paid by the hour, norm or agreement. This number does not include the hours worked by engineers and technicians.

Data on number of workers refer to the number of workers employed on the last day of the month to which the data are related. This information does not include workers in the administrative, engineering or technical sector.

To calculate the change of data on employment in construction (number of completed effective working hours and number of workers on building sites) the rates of change in relation to the previous month for both variables were taken into account. Change is calculated according to the following formula:

$$\Delta = \{[\text{Value (t)} - \text{Value (t-1)}] / \text{Value (t - 1)}\} \times 100$$

Where Value (t) represents the value of the current month, and Value (t-1) the value from previous month.

3 - 1.1 Indeksi vrijednosti izvršenih građevinskih radova, izvršenih efektivnih sati i broja radnika

Indices of value of completed construction works, completed effective hours and workers

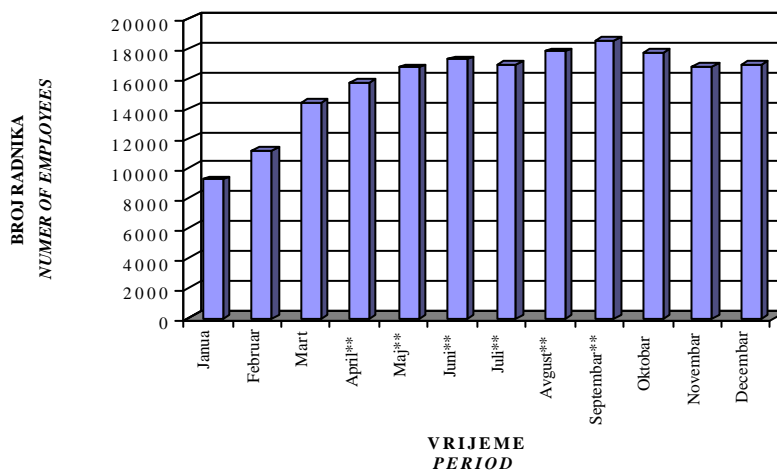
	<u>01.2003</u> F 2002	<u>02.2003</u> F 2002	<u>03.2003</u> F 2002	<u>04.2003**</u> F 2002	<u>05.2003**</u> F 2002	<u>06.2003**</u> F 2002
Vrijednost izvršenih radova	39,2	42,0	74,6	95,6	111,2	142,5
Izvršeni efektivni sati rada	56,5	67,6	92,8	105,7	111,8	118,2
Broj radnika na gradilištima	61,0	73,6	94,4	103,6	110,0	113,3
	<u>01.2003</u> 01.2002	<u>02.2003</u> 02.2002	<u>03.2003</u> 03.2002	<u>04.2003</u> 04.2002	<u>05.2003**</u> 05.2002	<u>06.2003**</u> 06.2002
Vrijednost izvršenih radova	85,3	88,7	86,6	126,5	101,0	137,6
Izvršeni efektivni sati rada	96,0	90,4	94,6	103,2	105,5	109,0
Broj radnika na gradilištima	94,4	89,0	94,1	101,1	104,0	105,4
	<u>01.2003</u> 12.2001	<u>02.2003</u> 01.2002	<u>03.2003</u> 02.2002	<u>04.2003**</u> 03.2002	<u>05.2003**</u> 04.2002	<u>06.2003**</u> 05.2002
Vrijednost izvršenih radova	38,6	91,3	157,6	111,1	147,1	129,4
Izvršeni efektivni sati rada	65,5	114,9	124,1	107,8	109,2	111,6
Broj radnika na gradilištima	66,7	113,8	114,2	103,3	107,3	107,1

** Ispravljeni podaci / Corrected data

Grafikon 1:

Graph 1:

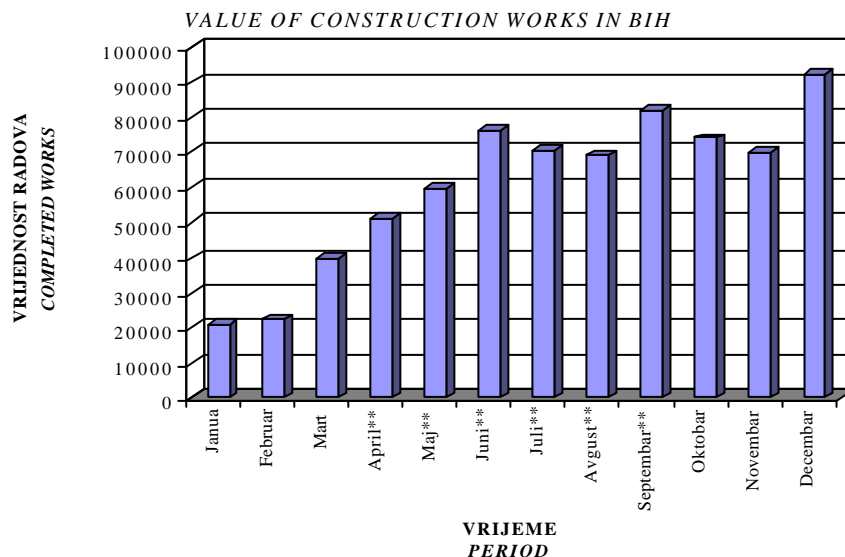
BROJ RADNIKA NA GRAĐEVINSKIM RADOVIMA U BiH
I - XII 2003
NUMBER OF EMPLOYEES ON CONSTRUCTION SITES IN BiH



<u>07.2003**</u> F 2002	<u>08.2003**</u> F 2002	<u>09.2003**</u> F 2002	<u>10.2003</u> F 2002	<u>11.2003</u> F 2002	<u>12.2003</u> F 2002	
131,8	129,4	153,3	138,5	131,0	172,7	Value of completed works
118,9	121,7	129,5	126,0	112,1	112,9	Completed effective hours
111,4	116,9	121,8	116,7	110,4	111,4	Number of employees on constr.site
<u>07.2003**</u> <u>07.2002</u>	<u>08.2003**</u> <u>08.2002</u>	<u>09.2003**</u> <u>09.2002</u>	<u>10.2003</u> <u>10.2002</u>	<u>11.2003</u> <u>11.2002</u>	<u>12.2003</u> <u>12.2002</u>	
115,9	101,5	119,6	117,7	116,6	130,7	Value of completed works
108,6	104,6	115,5	110,8	104,3	122,4	Completed effective hours
105,8	107,0	111,7	106,9	103,0	115,2	Number of employees on constr.site
<u>07.2003**</u> <u>06.2002</u>	<u>08.2003**</u> <u>07.2002</u>	<u>09.2003**</u> <u>08.2002</u>	<u>10.2003</u> <u>09.2002</u>	<u>11.2003</u> <u>10.2002</u>	<u>12.2003</u> <u>11.2002</u>	
127,2	113,8	120,2	108,0	111,4	153,8	Value of completed works
109,5	111,2	111,3	112,4	98,6	105,0	Completed effective hours
103,6	111,1	111,5	107,1	101,1	103,9	Number of employees on constr.site

Grafikon 2:
Graph 2:

**VRIJEDNOST IZVRŠENIH GRAĐEVINSKIH RADOVA U BiH
I - XII 2003.**



NIVO OBRADJE BOSNA I HERCEGOVINA
DATA PROCESSING - LEVEL BOSNIA AND HERZEGOVINA

3 - 1.2 Vrijednost izvršenih građevinskih radova, izvršeni efektivni sati i broj radnika
Value of completed construction works, completed effective hours and workers

	Vrijednost izvršenih radova *	Izvršeni efektivni sati rada	Broj radnika na gradilištima	ΔVrijednosti izvršenih radova	ΔIzvršenih efektivnih sati rada	ΔBroja radnika na gradilištima	
	<i>Value of completed works *</i>	<i>Completed effective hours</i>	<i>Number of employees on constr. site</i>	<i>ΔValue of completed works</i>	<i>ΔCompleted effective hours</i>	<i>ΔNumber of employees on constr.site</i>	
2003							2003
Janua	21019	1303626	9265	29,71	61,22	63,08	January
Februar	22497	1560367	11174	107,03	119,69	120,60	February
Mart	39940	2140459	14338	177,53	137,18	128,32	March
April **	51224	2438715	15739	128,25	113,93	109,77	April
Maj **	59563	2579877	16709	116,28	105,79	106,16	May
Juni **	76310	2728463	17214	128,12	105,76	103,02	June
Juli **	70575	2742461	16917	92,48	100,51	98,27	July
Avgust **	69312	2808010	17762	98,21	102,39	104,99	August
Septembar **	82085	2987630	18497	118,43	106,40	104,14	September
Oktobar	74157	2908583	17736	90,34	97,35	95,89	Oktober
Novembar	70140	2587540	16778	94,58	88,96	94,60	November
Decembar	92481	2606195	16927	131,85	100,72	100,89	December
Φ I - XII 2003	54725	2365512	15291				<i>F</i> I - XII 2003
Σ I - XII 2003	729303	29391926	189056				<i>S</i> I - XII 2003

Δ = % promjene pojave prema prethodnom mjesecu / % monthly variation towards previous month

* Vrijednost izvršenih radova data je u hilj. KM / Value of completed works, in thousand KM

** Ispravljani podaci / Corrected data

3 - 2.1 Vrijednost izvršenih građevinskih radova, izvršeni efektivni sati i broj radnika

Value of completed construction works, completed effective hours and workers

	Vrijednost izvršenih radova *	Izvršeni efektivni sati rada	Broj radnika na gradilištima	ΔVrijednosti izvršenih radova	ΔIzvršenih efektivnih sati rada	ΔBroja radnika na gradilištima	
	<i>Value of completed works *</i>	<i>Completed effective hours</i>	<i>Number of employees on constr. site</i>	<i>DValue of completed works</i>	<i>DCompleted effective hours</i>	<i>DNumber of employees on constr.site</i>	
2003							2003
Januar	11323	838806	6050	30,1	62,6	61,6	January
Februar	12861	949363	7143	113,6	113,2	118,1	February
Mart	21626	1239590	8807	168,2	130,6	123,3	March
April	29631	1407384	9655	137,0	113,5	109,6	April
Maj	33482	1448546	10275	113,0	102,9	106,4	May
Juni	44417	1524849	10332	132,7	105,3	100,6	June
Juli	39533	1532183	10114	89,0	100,5	97,9	July
Avgust	37330	1580416	10704	94,4	103,1	105,8	Avgust
Septembar	40482	1659379	11003	108,4	105,0	102,8	September
Oktobar	38014	1623470	10627	93,9	97,8	96,6	Oktober
Novembar	38254	1448026	9914	100,6	89,2	93,3	November
Decembar	45324	1447396	9736	118,5	100,0	98,2	December
Φ I - XII 2003	32690	1391617	9530	72,1	96,1	97,9	F I - XII 2003
Σ I - XII 2003	392277	16699408	114360				S I - XII 2003

Δ = % promjene pojave prema prethodnom mjesecu / % monthly variation towards previous month

* Vrijednost izvršenih radova data je u hilj. KM / Value of completed works, in thousand KM

3- 2.2 Indeksi vrijednosti izvršenih građevinskih radova, izvršenih efektivnih sati i broja radnika

Indices of value of completed construction works, completed effective hours and workers

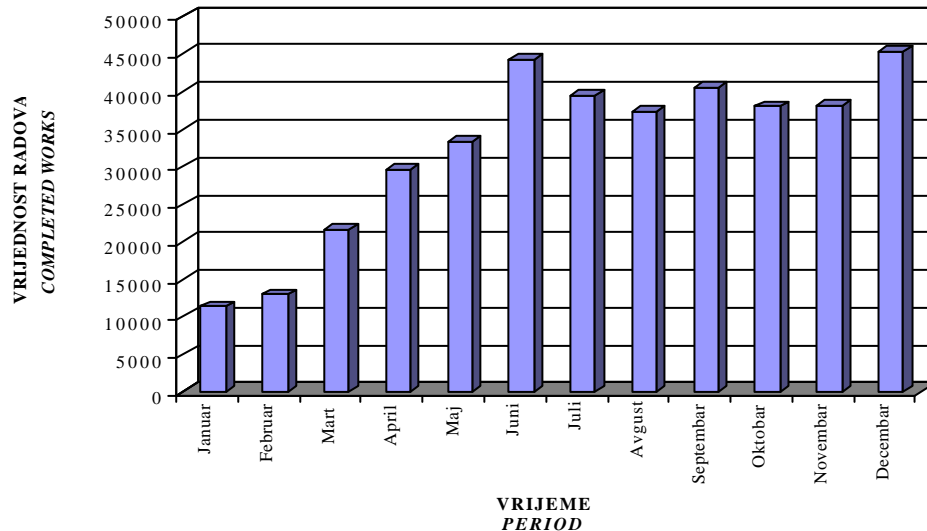
	<u>01.2003</u> F 2002	<u>02.2003</u> F 2002	<u>03.2003</u> F 2002	<u>04.2003</u> F 2002	<u>05.2003</u> F 2002	<u>06.2003</u> F 2002
Vrijednost izvršenih radova	36,0	40,9	68,8	94,3	106,6	141,4
Izvršeni efektivni sati rada	56,6	64,1	83,7	95,0	97,8	102,9
Broj radnika na gradilištima	58,8	69,4	85,6	93,8	99,8	100,4
	<u>01.2003</u> 01.2002	<u>02.2003</u> 02.2002	<u>03.2003</u> 03.2002	<u>04.2003</u> 04.2002	<u>05.2003</u> 05.2002	<u>06.2003</u> 06.2002
Vrijednost izvršenih radova	64,0	83,2	83,9	122,0	89,2	129,8
Izvršeni efektivni sati rada	83,1	78,9	83,7	92,7	92,8	96,9
Broj radnika na gradilištima	82,3	78,3	83,8	90,9	95,4	95,4
	<u>01.2003</u> 12.2001	<u>02.2003</u> 01.2002	<u>03.2003</u> 02.2002	<u>04.2003</u> 03.2002	<u>05.2003</u> 04.2002	<u>06.2003</u> 05.2002
Vrijednost izvršenih radova	39,9	72,7	139,9	115,0	137,8	118,3
Izvršeni efektivni sati rada	66,7	94,0	103,1	95,0	95,4	97,7
Broj radnika na gradilištima	63,9	97,2	96,6	91,8	96,7	96,0

** Ispravljeni podaci / Corrected data

Grafikon 3:
Graph 3:

**VRIJEDNOST IZVRŠENIH GRAĐEVINSKIH RADOVA U FBiH
I - XII 2003.**

VALUE OF CONSTRUCTION WORKS IN FBiH



3- 2.2 Indeksi vrijednosti izvršenih građevinskih radova, izvršenih efektivnih sati i broja radnika

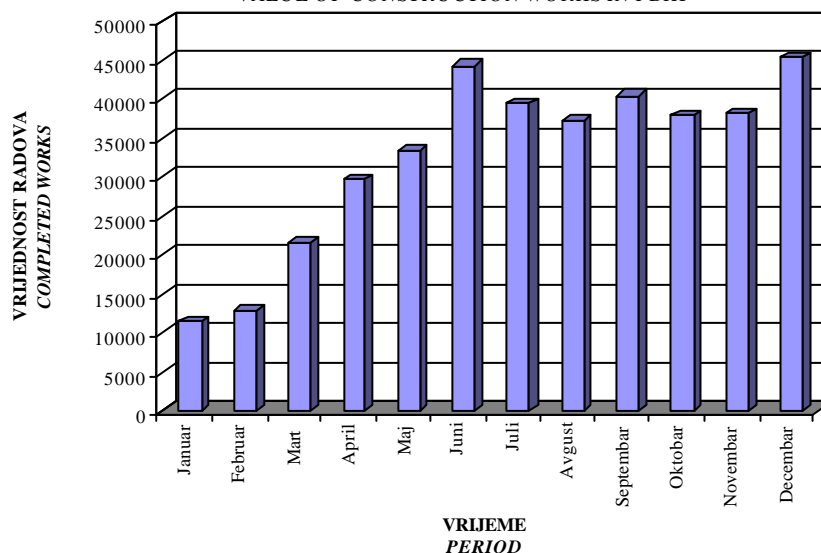
Indices of value of completed construction works, completed effective hours and workers

<u>07.2003</u> F 2002	<u>08.2003</u> F 2002	<u>09.2003</u> F 2002	<u>10.2003</u> F 2002	<u>11.2003</u> F 2002	<u>12.2003</u> F 2002	
125,9	118,8	128,9	121,0	121,8	144,3	Value of completed works
103,4	106,7	112,0	109,6	97,8	97,7	Completed effective hours
98,3	104,0	106,9	103,3	96,3	91,2	Number of employees on constr.site
<u>07.2003</u> 07.2002	<u>08.2003</u> 08.2002	<u>09.2003</u> 09.2002	<u>10.2003</u> 10.2002	<u>11.2003</u> 11.2002	<u>12.2003</u> 12.2002	
109,8	99,9	105,8	108,0	101,9	120,6	Value of completed works
94,8	95,8	101,5	100,7	91,9	108,0	Completed effective hours
93,4	98,5	99,2	98,0	91,6	99,1	Number of employees on constr.site
<u>07.2003</u> 06.2002	<u>08.2003</u> 07.2002	<u>09.2003</u> 08.2002	<u>10.2003</u> 09.2002	<u>11.2003</u> 10.2002	<u>12.2003</u> 11.2002	
115,5	103,7	108,3	99,3	108,7	120,8	Value of completed works
97,3	97,8	100,6	99,3	89,8	91,8	Completed effective hours
93,4	98,8	101,2	95,8	91,4	90,0	Number of employees on constr.site

Grafikon 4:
Graph 4:

**VRJEDNOST IZVRŠENIH GRAĐEVINSKIH RADOVA U FBiH
I - XII 2003.**

VALUE OF CONSTRUCTION WORKS IN FBiH



3 - 3.1 Indeksi vrijednosti izvršenih građevinskih radova, izvršenih efektivnih sati i broja radnika

Indices of value of completed construction works, completed effective hours and workers

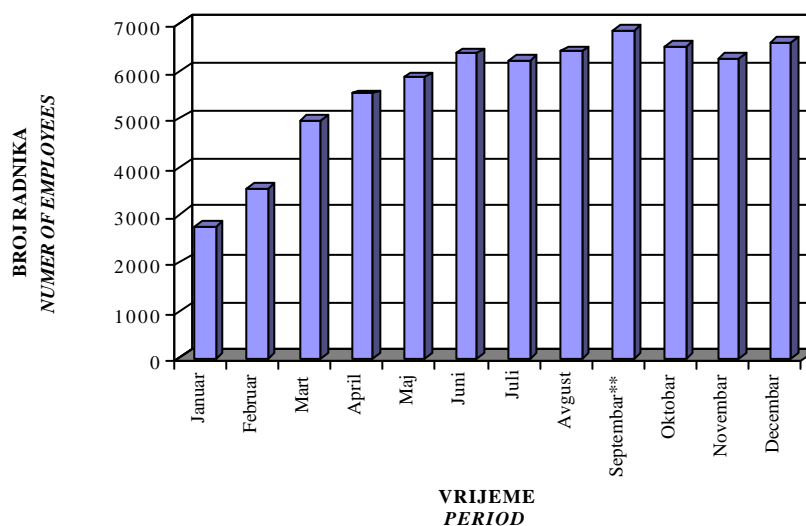
	<u>01.2003**</u> F 2002	<u>02.2003**</u> F 2002	<u>03.2003**</u> F 2002	<u>04.2003**</u> F 2002	<u>05.2003**</u> F 2002	<u>06.2003**</u> F 2002
Vrijednost izvršenih radova	39,2	36,6	69,6	84,4	101,9	126,5
Izvršeni efektivni sati rada	48,2	63,4	94,2	110,3	120,5	131,1
Broj radnika na gradilištima	55,2	71,7	100,1	110,9	117,8	127,9
	<u>01.2003</u> <u>01.2002</u>	<u>02.2003</u> <u>02.2002</u>	<u>03.2003</u> <u>03.2002</u>	<u>04.2003</u> <u>04.2002</u>	<u>05.2003</u> <u>05.2002</u>	<u>06.2003</u> <u>06.2002</u>
Vrijednost izvršenih radova	125,7	82,5	76,4	116,4	106,1	133,0
Izvršeni efektivni sati rada	115,8	101,7	101,0	109,6	114,2	118,1
Broj radnika na gradilištima	111,2	103,6	105,6	111,3	110,5	115,6
	<u>01.2003</u> <u>12.2001</u>	<u>02.2003</u> <u>01.2002</u>	<u>03.2003</u> <u>02.2002</u>	<u>04.2003</u> <u>03.2002</u>	<u>05.2003</u> <u>04.2002</u>	<u>06.2003</u> <u>05.2002</u>
Vrijednost izvršenih radova	33,5	117,4	157,1	92,6	140,6	131,7
Izvršeni efektivni sati rada	55,1	152,4	151,1	118,4	119,6	124,3
Broj radnika na gradilištima	62,1	144,4	144,7	116,9	118,3	120,0

** Ispravljeni podaci / Corrected data

Grafikon 5:

Graph 5:

BROJ RADNIKA NA GRAĐEVINSKIM RADOVIMA U RS
I - XII 2003
NUMBER OF EMPLOYEES ON CONSTRUCTION SITES IN RS



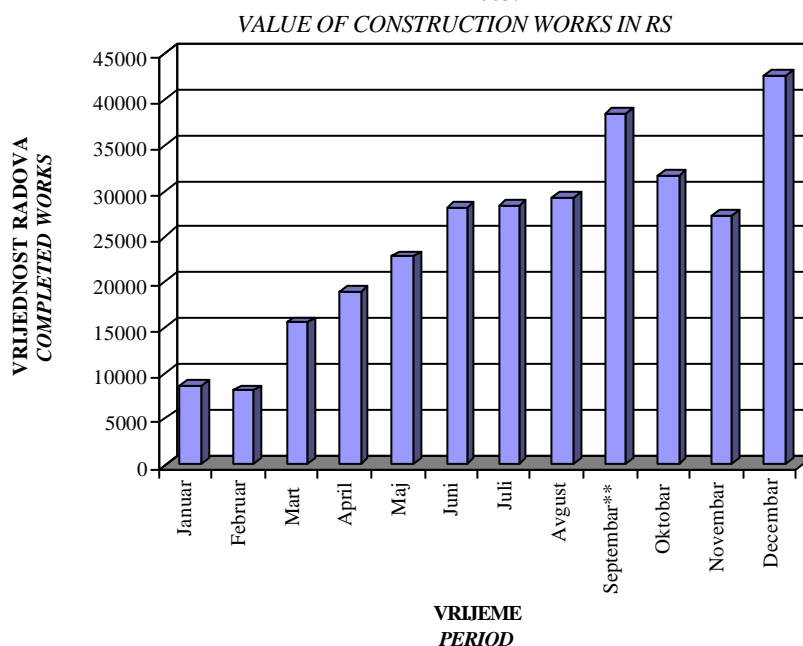
3 - 3.1 Indeksi vrijednosti izvršenih građevinskih radova, izvršenih efektivnih sati i broja radnika

Indices of value of completed construction works, completed effective hours and workers

<u>07.2003</u> F 2002	<u>08.2003</u> F 2002	<u>09.2003</u> F 2002	<u>10.2003</u> F 2002	<u>11.2003</u> F 2002	<u>12.2003</u> F 2002	
127,6	130,7	172,7	141,6	122,8	191,5	Value of completed works
130,7	131,9	143,0	137,1	123,5	125,8	Completed effective hours
125,2	129,2	137,6	131,0	126,2	132,8	Number of employees on constr.site
<u>07.2003</u> 07.2002	<u>08.2003</u> 08.2002	<u>09.2003</u> 09.2002	<u>10.2003</u> 10.2002	<u>11.2003</u> 11.2002	<u>12.2003</u> 12.2002	
114,5	94,5	126,0	114,7	121,3	121,1	Value of completed works
120,5	106,9	117,1	113,5	114,3	122,3	Completed effective hours
120,5	112,2	116,3	113,2	114,7	125,1	Number of employees on constr.site
<u>07.2003</u> 06.2002	<u>08.2003</u> 07.2002	<u>09.2003</u> 08.2002	<u>10.2003</u> 09.2002	<u>11.2003</u> 10.2002	<u>12.2003</u> 11.2002	
134,1	117,3	124,8	103,3	99,5	189,2	Value of completed works
117,8	121,6	115,9	112,2	102,3	116,4	Completed effective hours
113,0	124,4	119,5	110,6	109,1	120,7	Number of employees on constr.site

Grafikon 6:
Graph 6:

**VRIJEDNOST IZVRŠENIH GRAĐEVINSKIH RADOVA U RS
I - XII 2003.**



3 - 3.2 Vrijednost izvršenih građevinskih radova, izvršeni efektivni sati i broj radnika

Value of completed construction works, completed effective hours and workers

	* Vrijednost izvršenih radova / * Value of completed works	Izvršeni efektivni sati rada / Completed effective hours	Broj radnika na gradilištima / Number of employees on constr. site	ΔVrijednosti izvršenih radova / ΔValue of completed works	ΔIzvršenih efektivnih sati rada / ΔCompleted effective hours	ΔBroja radnika na gradilištima / ΔNumber of employees on constr. site	
2003							2003
Januar	8743	404033	2745	24,8	46,9	52,0	January
Februar	8160	531635	3565	93,3	131,6	129,9	February
Mart	15544	789711	4977	190,5	148,5	139,6	March
April	18839	925019	5511	121,2	117,1	110,7	April
Maj	22759	1009901	5855	120,8	109,2	106,2	May
Juni	28243	1098609	6359	124,1	108,8	108,6	June
Juli	28489	1095565	6220	100,9	99,7	97,8	July
Avgust	29185	1105363	6421	102,4	100,9	103,2	August
Septembar**	38548	1198843	6841	132,1	108,5	106,5	September
Oktobar	31619	1149216	6509	82,0	95,9	95,1	October
Novembar	27411	1035559	6274	86,7	90,1	96,4	November
Decembar	42763	1054413	6599	156,0	101,8	105,2	December
Φ I - XII 2003	25025	949822	5656				F I - XII 2003
Σ I - XII 2003	300303	11397867	67876				S I - XII 2003

Δ = % promjene pojave prema prethodnom mjesecu / % monthly variation towards previous month

* Vrijednost izvršenih radova data je u hilj. KM / Value of completed works, in thousand KM

** Ispravljeni podaci / Corrected data

NIVO OBRADJE DISTRIKT BR^KO
DATA PROCESSING - LEVEL DISTRICT BRCKO

3 - 4.1 Vrijednost izvršenih građevinskih radova, izvršeni efektivni sati i broj radnika

Value of completed construction works, completed effective hours and workers

	* Vrijednost izvršenih radova / * Value of completed works	Izvršeni efektivni sati rada / Completed effective hours	Broj radnika na gradilištima/ Number of employees on constr. site	ΔVrijednosti izvršenih radova / ΔValue of completed works	ΔIzvršenih efektivnih sati rada / ΔCompleted effective hours	ΔBroja radnika na gradilištima/ ΔNumber of employees on constr.site	
2003							2003
Januar	953	60787	470	33,5	73,1	95,5	January
Februar	1476	79369	466	154,9	130,6	99,1	February
Mart	2770	111158	554	187,7	140,1	118,9	March
April**	2754	106312	573	99,4	95,6	103,4	April
Maj**	3322	121430	579	120,6	114,2	101,0	May
Juni**	3650	105005	523	109,9	86,5	90,3	June
Juli**	2553	114713	583	69,9	109,2	111,5	July
Avgust**	2797	122231	637	109,6	106,6	109,3	Avgust
Septembar**	3055	129408	653	109,2	105,9	102,5	September
Oktobar	4524	135897	600	148,1	105,0	91,9	Oktober
Novembar	4475	103955	590	98,9	76,5	98,3	November
Decembar	4394	104386	592	98,2	100,4	100,3	December
Φ I - XII 2003	3060	107888	568				F I - XII 2003
Σ I - XII 2003	36723	1294651	6820				S I - XII 2003

Δ = % promjene pojave prema prethodnom mjesecu / % monthly variation towards previous month

* Vrijednost izvršenih radova data je u hilj. KM / Value of completed works, in thousand KM

** Ispravljani podaci / Corrected data

3 - 4.2 Indeksi vrijednosti izvršenih građevinskih radova, izvršenih efektivnih sati i broja radnika

Indices of value of completed construction works, completed effective hours and workers

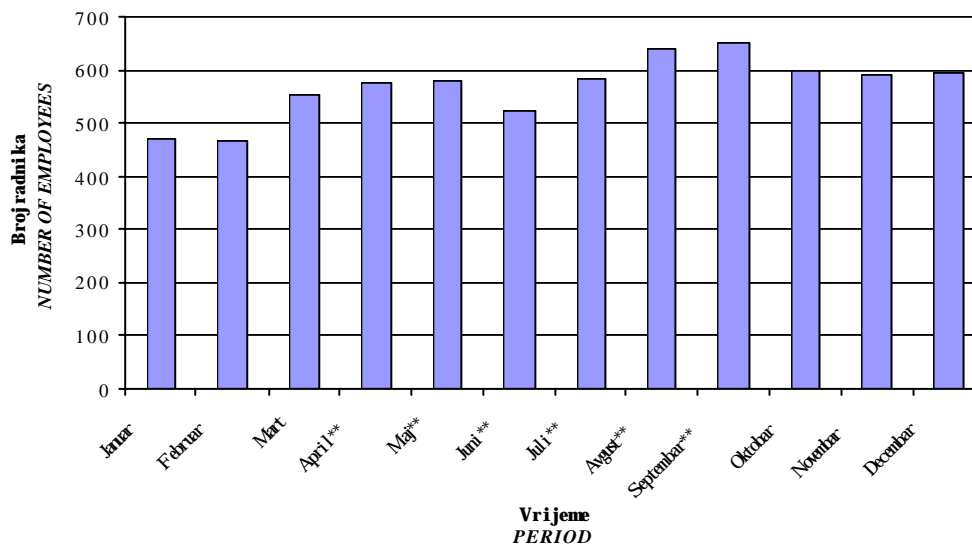
	<u>01.2003</u> F 2002	<u>02.2003</u> F 2002	<u>03.2003</u> F 2002	<u>04.2003**</u> F 2002	<u>05.2003**</u> F 2002	<u>06.2003**</u> F 2002
Vrijednost izvršenih radova	44,9	69,5	130,4	129,7	156,4	171,9
Izvršeni efektivni sati rada	71,8	93,8	131,3	125,6	143,4	124,0
Broj radnika na gradilištima	97,0	96,2	114,3	118,3	119,5	107,9
	<u>01.2003</u> <u>01.2002</u>	<u>02.2003</u> <u>02.2002</u>	<u>03.2003</u> <u>03.2002</u>	<u>04.2003**</u> <u>04.2002</u>	<u>05.2003**</u> <u>05.2002</u>	<u>06.2003**</u> <u>06.2002</u>
Vrijednost izvršenih radova	142,2	167,5	251,6	160,7	143,3	105,8
Izvršeni efektivni sati rada	119,0	139,4	180,1	137,3	145,3	110,8
Broj radnika na gradilištima	141,6**	129,1**	148,5**	128,5	121,9	99,6
	<u>01.2003</u> <u>12.2001</u>	<u>02.2003</u> <u>01.2002</u>	<u>03.2003</u> <u>02.2002</u>	<u>04.2003**</u> <u>03.2002</u>	<u>05.2003**</u> <u>04.2002</u>	<u>06.2003**</u> <u>05.2002</u>
Vrijednost izvršenih radova		220,3	314,4	250,1	193,8	157,5
Izvršeni efektivni sati rada		155,4	195,3	172,3	156,9	125,7
Broj radnika na gradilištima		140,4**	153,5**	153,6	129,8	110,1

** Ispravljeni podaci
Corrected data

Grafikon 7:

Graph 7:

Broj radnika na građevinskim radovima u DB
I - XII 2003
NUMBER OF EMPLOYEES ON CONSTRUCTION SITES IN DB



3 - 4.2 Indeksi vrijednosti izvršenih građevinskih radova, izvršenih efektivnih sati i broja radnika

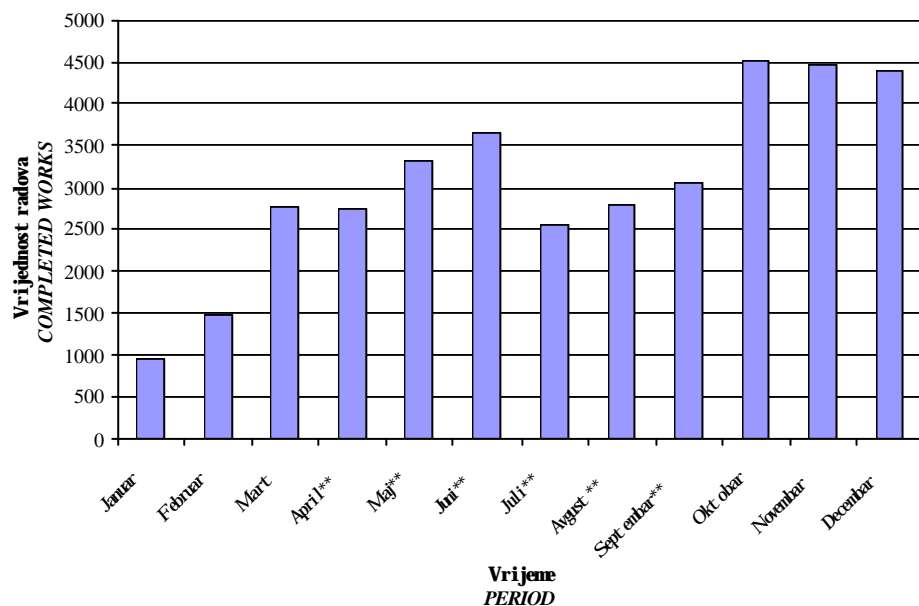
Indices of value of completed construction works, completed effective hours and workers

<u>07.2003**</u> F 2002	<u>08.2003**</u> F 2002	<u>09.2003**</u> F 2002	<u>10.2003</u> F 2002	<u>11.2003</u> F 2002	<u>12.2003</u> F 2002	
120,2	131,7	143,9	213,0	210,7	206,9	Value of completed works
135,5	144,4	152,9	160,5	122,8	123,3	Completed effective hours
120,3	131,5	134,8	123,8	121,8	122,2	Number of employees on constr. site
<u>07.2003**</u> 07.2002	<u>08.2003**</u> 08.2002	<u>09.2003**</u> 09.2002	<u>10.2003</u> 10.2002	<u>11.2003</u> 11.2002	<u>12.2003</u> 12.2002	
118,6	119,7	121,7	136,2	204,6	154,7	Value of completed works
126,3	113,1	134,0	122,6	103,0	125,6	Completed effective hours
116,1	108,1	119,6	99,5	103,5	120,3	Number of employees on constr. site
<u>07.2003**</u> 06.2002	<u>08.2003**</u> 07.2002	<u>09.2003**</u> 08.2002	<u>10.2003</u> 09.2002	<u>11.2003</u> 10.2002	<u>12.2003</u> 11.2002	
74,0	129,9	130,7	180,2	134,7	200,9	Value of completed works
121,0	134,6	119,8	140,7	93,8	103,4	Completed effective hours
111,0	126,9	110,9	109,9	97,8	103,9	Number of employees on constr. site

Grafikon 8:
Graph 8:

**Vrijednost izvršenih građevinskih radova u DB
I - XII 2003.**

VALUE OF CONSTRUCTION WORKS IN DB



4. PREVOZ I VEZE
TRANSPORT AND
COMMUNICATIONS

PREVOZ I VEZE

Metodološka objašnjenja

Podaci o drumskom i željezničkom prometu dobijeni su obradom mjesečnih statističkih izvještaja, koja su entitetski statistički zavodi prikupili od preduzeca i drugih poslovnih subjekata koji se bave prevozom putnika i robe (tereta) u unutrašnjem i međunarodnom prevozu.

Za željeznički prevoz u ovom biltenu su raspoloživi sledeći pokazatelji: broj prevezenih putnika, tone prevezene robe (tereta) i broj putničkih i tonskih kilometara.

Za drumski prevoz, pored naprijed navedenih indikatora, raspoloživi su i podaci o pređenim kilometrima vozila.

U drumskom prevozu nije obuhvaćen prevoz putnika i robe koji, svojim prevoznim sredstvima, preduzeca obavljaju za vlastite potrebe (interni transport).

Pod pojmom prevoz u prometu, podrazumjeva se kretanje putnika ili tereta od jednog mjesta (mjesto ukrcaja) do drugog mjesta (mjesto iskrcaja) i predstavlja mjeru aktivnosti prevoznih preduzeca.

Putnički kilometer je izračunata jedinica mjere koja uslovno predstavlja prevoz 1 putnika na udaljenost od 1 kilometra. Indikator - putnički kilometer – je kompleksan indikator koji je izračunat i dostavljen od strane preduzeca – izvještajnih jedinica. Ovaj indikator iskazuje agregiranu jedinicu mjere broja prevezenih putnika u odnosu na predenu dionicu puta. Radi se o mjeri fizičkog obima prevoza i pokazatelj je rentabilnosti rada prevoznog preduzeca.

Na isti način, tonski kilometer je jedinica mjere koja predstavlja prevoz 1 tone robe na udaljenost od 1 kilometra.

Gradski prevoz predstavljen je podacima o pređenim kilometrima vozila i prevezenim putnicima na određenim gradskim linijama sa fiksiranim stanicama i utvrđenim voznim redom. Podacima je obuhvaćen prevoz putnika koji se obavlja gradskim autobusima, tramvajima i trolejbusima. U Republici Srpskoj ne postoje tramvajske i trolejbuske linije.

Oblast telekomunikacija u biltenu je predstavljena osnovnim indikatorima o poštanskom, telegrafskom i telefonskom prometu, a ulazni podaci dobijeni su na osnovu mjesečnih izvještaja preduzeca registriranih za tu djelatnost.

Podaci za pismo nosne i paketne pošiljke u unutrašnjem i međunarodnom prometu sadrže transvere: pisama, preporučenih pošiljki, vrednosnih pisama i paketa primljenih na otpremu i prispjelih za dostavu i isporuku, bez tranzita, a uključena je i otprema časopisa i novina upućenih pretplatnicima.

TRANSPORT AND COMMUNICATIONS

Notes on methodologies

Data on road and railway transport were obtained by processing monthly statistical surveys, which the entity Statistical Office collected from enterprises and other business units which provide domestic and international transport of passengers and goods.

For railway transport the following indicators are available in this bulletin: number of transported passengers, tons of transported goods (freight) and number of passengers and tons/kilometre.

For road transport, besides the above mentioned indicators, data are available on kilometres covered by means of transport.

Road transport does not include the transport of passengers and goods undertaken by firms for their own needs and with their own means.

By transport we mean the movement of passengers or cargo from one place (place of loading) to another (place of unloading).

Passenger kilometre is an indicator representing the transport of one passenger for the distance of one kilometre. This indicator is a complex one, which is calculated and delivered by firms. It is obtained from the aggregated number of transported passengers in relation to the distance of transportation. It concerns a measure of physical quantity of transport and is an indicator of rentability work of a transport company.

In the same way, ton kilometres is a unit which represents the transportation of one ton of goods for the distance of one kilometre.

Urban transport is represented by data on kilometres covered by means of transportation and transported passengers on certain urban lines with fixed stations and schedules drive time. The data comprise transport of passengers on city buses, trams and trolley buses. Republika Srpska has neither trams nor trolley bus lines.

In the bulletin the area of telecommunications is presented by basic indicators on post, telegram and telephone traffic. Input data were obtained from monthly reports by firms, which are registered for these activities.

Data for letters and parcels in internal and international transport comprise: letters, special letters, valuable letters and parcels received for delivery, including delivery of magazines and newspapers sent to subscribers, excluding transit.

Domestic telegraph service covers only delivered telegrams, while the international services covers both, delivered and received telegrams.

4 - 1.1 Drumski, gradski, željeznicki i poštansko-telefonski promet

A. Drumski i gradski prevoz

	01. 2003	02. 2003	03. 2003	04. 2003	05. 2003	06. 2003	07. 2003
PRIJEVOZ ROBE / GOODS TRANSPORT							
Predeni kilometri vozila, u 000	2224	2662	3297	3694	3806	3777	4208
Prevezeno tona robe, u 000	82	87	150	173	174	183	161
Tonski kilometri, u 000	18.114	20292	25.718	29.065	29.739	28.050	31.716
PRIJEVOZ PUTNIKA / PASSENGER TRANSPORT							
Predeni kilometri vozila, u 000	5453	5345	5.675	5.919	6074	6220	6206
Prevezeni putnici, u 000	1.663	1.804	1.815	1.938	1.973	1.888	1.651
Putnicki kilometri, u 000	77.300	73.166	77.366	84.577	85.980	89.350	89.031
GRADSKO-PRIGRADSKI SAOBRAĆAJ / URBAN-SUBURBAN TRANSPORT							
Predeni kilometri vozila, u 000	4.886	4.905	5.419	5.273	5.500	5.045	4.880
Prevezeni putnici, u 000	17.462	18.869	19.762	18.574	19.424	17.622	17.270

4 - 1.1 Highway, urban and railway transport and telecommunication services

A. Highway and urban transport

08. 2003	09. 2003	10. 2003	11. 2003	12. 2003	F 2003	
3.766	4.164	4.033	3.811	3.707	3.596	Vehicle-kilometers covered, in thous.
144	141	132	124	119	139	Tons of goods transported, in thous.
27.501	29.601	29.102	27.648	27.243	26.982	Metric tons kilometers, in thous.
6.457	6.325	6.091	5.970	6.103	5.987	Vehicle-kilometers covered, in thous.
1.668	1.917	1.867	1.820	1.896	1.825	Passenger transported, in thousands
92.423	93.732	86.887	85.217	93.746	85.731	Passenger-kilometers, in thousands
4.909	5.364	5.181	5.117	5.374	5.154	Vehicle-kilometers covered, in thous.
15.787	19.780	20.554	20.487	20.651	18.854	Passenger transported, in thousands

4 - 1.1 Drumski, gradski, željeznički i poštansko-telefonski prevoz (nastavak)

B. Željeznički prevoz

	01. 2003	02. 2003	03. 2003	04. 2003	05. 2003	06. 2003	07. 2003
PRIJEVOZ ROBE / GOODS TRANSPORT							
Prevezeno tona robe, u 000	420	407	470	547	639	487	621
Tonski kilometri, u milionima	13	17	17	28	28	16	28
PRIJEVOZ PUTNIKA / PASSENGER TRANSPORT							
Prevezeni putnici, u 000	98	76	100	84	88	95	85
Putnicki kilometri, u milionima	4	4	4	4	4	4	5

C. Poštansko-telefonski promet

	01. 2003	02. 2003	03. 2003	04. 2003	05. 2003	06. 2003	07. 2003
Pismonosne pošiljke, u 000	5025	4706	4750	5009	4557	5054	5425
Paketske pošiljke, u 000	23	20	29	31	23	18	15
Telefonski razgovori, u mil. impulsa	866	773	874	881	902	869	909
Mobilni telefon. razgovori, u 000 min.	12091	10839	12212	12485	13179	13477	14044

4 - 1.1 Highway, urban and railway transport and telecommunication services
(continued)

							<i>B. Railway transport</i>
08. 2003	09. 2003	10. 2003	11. 2003	12. 2003	F 2003		
690	633	660	635	570	565	Tons of goods transported, in thous.	
33	28	38	42	30	26	Metric tons kilometers, in millions	
83	84	101	94	102	91	Passenger transported, in thousands	
5	5	6	5	5	4	Passenger-kilometers, in millions	

							<i>C. Postal and telecommunication services</i>
08. 2003	09. 2003	10. 2003	11. 2003	12. 2003	F 2003		
5.014	5.057	5.216	4.607	6.169	5.049	Number of letters, in thousands	
20	23	25	27	33	24	Number of parcels	
917	867	875	850	903	874	Telephone calls, in milion impulses	
17.131	15.969	16.723	15.121	16.525	14.150	Cell phone calls, in 000 minutes	

4 - 1.2 Indeksi u saobraćaju / *Indices in transport*A. Drumski i gradski prevoz / *Highway and urban transport*

	<u>2001</u> 2000	<u>2002 *</u> 2001	<u>2003</u> 2002 *	
PRJIEVOZ ROBE / GOODS TRANSPORT				
Predeni kilometri vozila, u 000	92,9	123,0	125,0	<i>Vehicle-kilometers covered, in thous.</i>
Prevezeno tona robe, u 000	86,1	125,2	90,7	<i>Tons of goods transported, in thous.</i>
Tonski kilometri, u 000	80,7	116,5	103,4	<i>Metric tons kilometers, in thous.</i>
PRJIEVOZ PUTNIKA / PASSENGER TRANSPORT				
Predeni kilometri vozila, u 000	100,0	85,3	106,0	<i>Vehicle-kilometers covered, in thous.</i>
Prevezeni putnici, u 000	102,3	61,3	93,2	<i>Passenger transported, in thousands</i>
Putnicki kilometri, u 000	84,8	92,4	99,9	<i>Passenger-kilometers, in thousands</i>
GRADSKO - PRIGRADSKI SAOBRAĆAJ / URBAN - SUBURBAN TRANSPORT				
Predeni kilometri vozila, u 000	99,8	117,2	100,0	<i>Vehicle-kilometers covered, in thous.</i>
Prevezeni putnici, u 000	98,2	106,1	98,7	<i>Passenger transported, in thousands</i>

4 - 1.2 Indeksi u saobraćaju / Indices in transport

	B. Željeznički prevoz / Railway transport			
	<u>2001</u> 2000	<u>2002 *</u> 2001	<u>2003</u> 2002 *	
PRIJEVOZ ROBE / GOODS TRANSPORT				
Prevezeno tona robe, u 000	126,3	123,3	101,7	<i>Tons of goods transported, in thous.</i>
Tonski kilometri, u milionima	126,2	109,4	102,8	<i>Metric tons kilometers, in millions</i>
PRIJEVOZ PUTNIKA / PASSENGER TRANSPORT				
Prevezeni putnici, u 000	96,7	86,6	97,0	<i>Passenger transported, in thousands</i>
Putnicki kilometri, u milionima	106,6	104,8	102,6	<i>Passenger-kilometers, in millions</i>

C. Poštansko-telefonski promet / Postal and telecommunication services

	<u>2001</u> 2000	<u>2002 *</u> 2001	<u>2003</u> 2002 *	
Pismonosne pošiljke, u 000	70,9	135,6	108,2	<i>Number of letters, in thousands</i>
Paketske pošiljke, u 000	98,8	177,9	99,9	<i>Number of parcels</i>
Telefonski razgovori, u mil. impulsa	109,7	108,1	105,3	<i>Telephone calls, in milion impulses</i>
Mobilni telefon. razgovori, u 000 min.	145,0	120,1	126,0	<i>Cell phone calls, in 000 minutes</i>

Napomena: Podaci za 2002 i 2003 godinu, pored podataka za entitete, sadrže i podatke za Brcko Distrikt

Note: Data for 2002 and 2003 includes data for Republic of Srpska, Federation of B&H and Brcko District

* Ispravljen podatak

* Corrected data

4 - 2.1 Drumski, gradski, željeznicki i poštansko-telefonski prevoz**A. Drumski i gradski prevoz**

	01. 2003	02. 2003	03. 2003	04. 2003	05. 2003	06. 2003	07. 2003
PRUIEVOZ ROBE / GOODS TRANSPORT							
Predeni kilometri vozila, u 000	1.449	1.621	2.032	2.327	2.326	2.446	2.648
Prevezeno tona robe, u 000	69	72	102	120	118	128	123
Tonski kilometri, u 000	12960	14.111	17.775	20.271	19.794	19.883	22.034
PRUIEVOZ PUTNIKA / PASSENGER TRANSPORT							
Predeni kilometri vozila, u 000	3.139	3.018	3.163	3.293	3.437	3.582	3.707
Prevezeni putnici, u 000	1.162	1.232	1.225	1.267	1.350	1.299	1.108
Putnicki kilometri, u 000	38.472	36.103	38.143	42.265	45.537	48.042	46.075
GRADSKO-PRIGRADSKI SAOBRACAJ / URBAN-SUBURBAN TRANSPORT							
Predeni kilometri vozila, u 000	3.420	3.305	3.674	3.669	3.810	3.554	3.514
Prevezeni putnici, u 000	16.142	17.301	17.735	17.004	17.764	16.370	16.077

4 - 2.1 Highway, urban and railway transport and telecommunication services

A. Highway and urban transport

08. 2003	09. 2003	10. 2003	11. 2003	12. 2003	F 2003	
2.300	2.453	2.250	2.037	2.037	2.161	Vehicle-kilometers covered, in thous.
108	105	93	83	83	100	Tons of goods transported, in thous.
19.009	19.727	18.365	17.459	17.459	18.237	Metric tons kilometers, in thous.
3.873	3.731	3.496	3.556	3.556	3.463	Vehicle-kilometers covered, in thous.
1.128	1.235	1.180	1.227	1.227	1.220	Passenger transported, in thousands
49.365	50.796	46.149	51.684	51.684	45.360	Passenger-kilometers, in thousands
3.507	3.765	3.537	3.796	3.796	3.612	Vehicle-kilometers covered, in thous.
14.639	18.300	19.007	19.147	19.147	17.386	Passenger transported, in thousands

4 - 2.1 Drumski, gradski, željeznicki i poštansko-telefonski prevoz (nastavak)

B. Željeznicki prevoz

	01. 2003	02. 2003	03. 2003	04. 2003	05. 2003	06. 2003	07. 2003
PRUEVOZ ROBE / GOODS TRANSPORT							
Prevezeno tona robe, u 000	382	359	404	463	568	407	493
Tonski kilometri, u milionima	9	12	11	16	23	11	18
PRUEVOZ PUTNIKA / PASSENGER TRANSPORT							
Prevezeni putnici, u 000	23	16	20	23	22	18	23
Putnicki kilometri, u milionima	1	1	1	1	1	1	2

C. Poštansko-telefonski promet

	01. 2003	02. 2003	03. 2003	04. 2003	05. 2003	06. 2003	07. 2003
Pismonosne pošiljke, u 000	3811	3406	3504	3836	3416	3956	4201
Paketske pošiljke, u 000	14	14	20	23	17	14	11
Telefonski razgovori, u mil. impulsa	480	436	467	483	516	491	515
Mobilni telefon. razgovori, u 000 min.	12091	10839	12212	12485	13179	13477	14044

4 - 2.1 Highway, urban and railway transport and telecommunication services
(continued)

B. Railway transport

08. 2003	09. 2003	10. 2003	11. 2003	12. 2003	F 2003	
564	487	467	452	414	455	Tons of goods transported, in thous.
22	17	25	26	22	18	Metric tons kilometers, in millions
22	20	19	18	19	20	Passenger transported, in thousands
2	2	2	2	2	2	Passenger-kilometers, in millions

C. Postal and telecommunication services

08. 2003	09. 2003	10. 2003	11. 2003	12. 2003	F 2003	
3.910	3.909	3.980	3.455	4.850	3.853	Number of letters, in thousands
14	18	19	21	25	18	Number of parcels
496	486	500	458	498	486	Telephone calls, in milion impulses
17.131	15.969	16.723	15.121	16.525	14.150	Cell phone calls, in 000 minutes

4 -2.2 Indeksi u saobraćaju / Indices in transport**A. Drumski i gradski prevoz / Highway and urban transport**

	<u>2001</u> 2000	<u>2002*</u> 2001	<u>2003</u> 2002*	
PRIJEVOZ ROBE / GOODS TRANSPORT				
Predeni kilometri vozila, u 000	106,1	105,7	115,3	Vehicle-kilometers covered, in thous.
Prevezeno tona robe, u 000	91,9	104,8	95,8	Tons of goods transported, in thous.
Tonski kilometri, u 000	97,1	99,9	100,1	Metric tons kilometers, in thous.
PRIJEVOZ PUTNIKA / PASSENGER TRANSPORT				
Predeni kilometri vozila, u 000	98,4	86,0	108,4	Vehicle-kilometers covered, in thous.
Prevezeni putnici, u 000	102,0	94,4	96,3	Passenger transported, in thousands
Putnicki kilometri, u 000	93,5	96,7	119,3	Passenger-kilometers, in thousands
GRADSKO - PRIGRADSKI SAOBRAĆAJ / URBAN - SUBURBAN TRANSPORT				
Predeni kilometri vozila, u 000	99,5	96,8	100,4	Vehicle-kilometers covered, in thous.
Prevezeni putnici, u 000	98,8	99,3	99,4	Passenger transported, in thousands

4 - 2.2 Indeksi u saobraćaju / Indices in transport

B. Željeznički prevoz / Railway transport

	<u>2001</u> 2000	<u>2002*</u> 2001	<u>2003</u> 2002*	
PRIJEVOZ ROBE / GOODS TRANSPORT				
Prevezeno tona robe, u 000	130,6	126,4	99,4	<i>Tons of goods transported, in thous.</i>
Tonski kilometri, u milionima	115,7	109,0	120,2	<i>Metric tons kilometers, in millions</i>
PRIJEVOZ PUTNIKA / PASSENGER TRANSPORT				
Prevezeni putnici, u 000	100,5	111,1	110,5	<i>Passenger transported, in thousands</i>
Putnicki kilometri, u milionima	99,8	161,2	126,5	<i>Passenger-kilometers, in millions</i>

C. Poštansko-telefonski promet / Postal and telecommunication services

	<u>2001</u> 2000	<u>2002*</u> 2001	<u>2003</u> 2002*	
Pismonosne pošiljke, u 000	58,4	148,0	113,6	<i>Number of letters, in thousands</i>
Paketske pošiljke, u 000	59,4	180,0	137,3	<i>Number of parcels</i>
Telefonski razgovori, u mil. impulsa	114,9	106,9	110,3	<i>Telephone calls, in milion impulses</i>
Mobilni telefon. razgovori, u 000 min.	145,0	120,1	126,0	<i>Cell phone calls, in 000 minutes</i>

4 - 3.1 Drumski, gradski, željeznički i poštansko-telefonski prevoz

A. Drumski i gradski prevoz

	01. 2003	02. 2003	03. 2003	04. 2003	05. 2003	06. 2003	07. 2003
PRIJEVOZ ROBE / GOODS TRANSPORT							
Predeni kilometri vozila, u 000	767	1.031	1.259	1.360	1.475	1.328	1.556
Prevezeno tona robe, u 000	13	15	47	52	55	55	38
Tonski kilometri, u 000	5.143	6.167	7.936	8.789	9.939	8.164	9.678
PRIJEVOZ PUTNIKA / PASSENGER TRANSPORT							
Predeni kilometri vozila, u 000	2.212	2.232	2.433	2.559	2.566	2.573	2.472
Prevezeni putnici, u 000	445	497	516	534	532	535	534
Putnički kilometri, u 000	37.838	35.812	38.165	41.023	39.370	40.405	42.661
GRADSKO-PRIGRADSKI SAOBRAĆAJ / URBAN-SUBURBAN TRANSPORT							
Predeni kilometri vozila, u 000	1.427	1.553	1.705	1.566	1.637	1.442	1.359
Prevezeni putnici, u 000	1.272	1.498	1.959	1.437	1.574	1.200	1.149

4 - 3.1 Highway, urban and railway transport and telecommunication services

A. Highway and urban transport

08. 2003	09. 2003	10. 2003	11. 2003	12. 2003	F 2003	
1.463	1.707	1.780	1.558	1.666	1.413	Vehicle-kilometers covered, in thous.
36	36	39	31	36	38	Tons of goods transported, in thous.
8.489	9.870	10.734	9.279	9.781	8.664	Metric tons kilometers, in thous.
2.554	2.522	2.524	2.408	2.490	2.462	Vehicle-kilometers covered, in thous.
527	597	594	559	595	539	Passenger transported, in thousands
42.623	42.575	40.387	38.473	41.458	40.066	Passenger-kilometers, in thousands
1.389	1.542	1.589	1.532	1.534	1.523	Vehicle-kilometers covered, in thous.
1.139	1.397	1.456	1.402	1.433	1.410	Passenger transported, in thousands

4 - 3.1 Drumski, gradski, željeznicki i poštansko-telefonski prevoz (nastavak)

B. Željeznicki prevoz

	01. 2003	02. 2003	03. 2003	04. 2003	05. 2003	06. 2003	07. 2003
PRIJEVOZ ROBE / GOODS TRANSPORT							
Prevezeno tona robe, u 000	38	48	66	84	71	80	128
Tonski kilometri, u milionima	3	5	6	12	5	5	10
PRIJEVOZ PUTNIKA / PASSENGER TRANSPORT							
Prevezeni putnici, u 000	75	60	80	61	66	77	62
Putnicki kilometri, u milionima	3	3	3	2	2	3	3

C. Poštansko-telefonski promet

	01. 2003	02. 2003	03. 2003	04. 2003	05. 2003	06. 2003	07. 2003
Pismonosne pošiljke, u 000	1.106	1.194	1.175	1.089	1.041	1.019	1.132
Paketske pošiljke, u 000	9	6	8	7	5	4	4
Telefonski razgovori, u mil. impulsa	368	319	385	375	361	359	372
Mobilni telefon. razgovori, u 000 min.	0	0	0	0	0	0	0

4 - 3.1 Highway, urban and railway transport and telecommunication services
(continued)

B. Railway transport

08. 2003	09. 2003	10. 2003	11. 2003	12. 2003	F 2003	
126	146	193	183	156	110	Tons of goods transported, in thous.
11	11	13	16	8	9	Metric tons kilometers, in millions
61	64	82	76	83	71	Passenger transported, in thousands
2	3	4	3	3	3	Passenger-kilometers, in millions

C. Postal and telecommunication services

08. 2003	09. 2003	10. 2003	11. 2003	12. 2003	F 2003	
1.028	1.068	1.137	1.073	1.202	1.105	Number of letters, in thousands
5	5	5	6	8	6	Number of parcels
397	381	375	392	405	374	Telephone calls, in milion impulses
0	0	0	0	0	0	Cell phone calls, in 000 minutes

4 -3.2 Indeksi u saobraćaju / *Indices in transport*

A. Drumski i gradski prevoz / *Highway and urban transport*

	<u>2001</u> 2000	<u>2002 *</u> 2001	<u>2003</u> 2002 *	
PRLJEVOZ ROBE / GOODS TRANSPORT				
Predeni kilometri vozila, u 000	65,7	178,5	146,7	<i>Vehicle-kilometers covered, in thous.</i>
Prevezeno tona robe, u 000	66,2	221,2	80,3	<i>Tons of goods transported, in thous.</i>
Tonski kilometri, u 000	45,2	192,8	113,0	<i>Metric tons kilometers, in thous.</i>
PRLJEVOZ PUTNIKA / PASSENGER TRANSPORT				
Predeni kilometri vozila, u 000	102,2	79,6	107,0	<i>Vehicle-kilometers covered, in thous.</i>
Prevezeni putnici, u 000	102,5	33,3	87,3	<i>Passenger transported, in thousands</i>
Putnicki kilometri, u 000	79,4	87,5	85,4	<i>Passenger-kilometers, in thousands</i>
GRADSKO - PRIGRADSKI SAOBRAĆAJ / URBAN - SUBURBAN TRANSPORT				
Predeni kilometri vozila, u 000	101,5	218,6	102,2	<i>Vehicle-kilometers covered, in thous.</i>
Prevezeni putnici, u 000	78,1	368,5	88,8	<i>Passenger transported, in thousands</i>

4 - 3.2 Indeksi u saobraćaju / *Indices in transport*B. Željeznički prevoz / *Railway transport*

	<u>2001</u> 2000	<u>2002 *</u> 2001	<u>2003</u> 2002 *	
PRIJEVOZ ROBE / GOODS TRANSPORT				
Prevezeno tona robe, u 000	111,5	110,8	112,4	<i>Tons of goods transported, in thous.</i>
Tonski kilometri, u milionima	143,9	109,9	79,6	<i>Metric tons kilometers, in millions</i>
PRIJEVOZ PUTNIKA / PASSENGER TRANSPORT				
Prevezeni putnici, u 000	96,1	82,2	93,7	<i>Passenger transported, in thousands</i>
Putnicki kilometri, u milionima	108,3	91,9	93,0	<i>Passenger-kilometers, in millions</i>

C. Poštansko-telefonski promet / *Postal and telecommunication services*

	<u>2001</u> 2000	<u>2002 *</u> 2001	<u>2003</u> 2002 *	
Pismonosne pošiljke, u 000	124,1	103,2	93,3	<i>Number of letters, in thousands</i>
Paketske pošiljke, u 000	380,0	168,8	55,2	<i>Number of parcels</i>
Telefonski razgovori, u mil. impulsa	104,2	103,7	101,4	<i>Telephone calls, in million impulses</i>
Mobilni telefon. razgovori, u 000 min.	-	-	-	<i>Cell phone calls, in 000 minutes</i>

* Ispravljen podatak

* *Corrected data*

5. TURIZAM I UGOSTITELJSTVO
TOURISM, HOTELS AND
RESTAURANTS

TURIZAM

Metodološka objašnjenja

Podaci o turističkom prometu (dolasci i nocenja) su rezultat statističkih istraživanja koja se provode u entitetskim zavodima za statistiku, a dobijeni su na osnovu mjesečnih izvještaja koje dostavljaju poslovni subjekti koji se bave pružanjem smještajnih usluga turistima. Izvještaji se sastavljaju na osnovu evidencija u knjigama gostiju.

Podacima je obuhvaćen broj dolazaka i nocenja, a ne broj turista.

Turistom se smatra svaka osoba koja putuje u neko mjesto izvan svoga prebivališta i provede najmanje jednu noc u ugostiteljskom ili nekom drugom objektu za smještaj gostiju, a motiv boravka u ugostiteljskom objektu može biti: odmor, poslovi (kongresi, sajmovi i izložbe, misije međunarodnih organizacija i sl.), zdravlje, učešćevanje u sportskim aktivnostima i sl.

Domacim turistom se smatra svaka osoba sa prebivalištem u BiH koja u nekom mjestu u BiH, izvan mjesta svoga prebivališta, provede najmanje jednu noc u ugostiteljskom ili drugom objektu za smještaj gostiju.

Strani turist je svaka osoba s prebivalištem izvan BiH koja privremeno boravi u BiH i koja provede najmanje jednu noc u ugostiteljskom ili drugom objektu za smještaj gostiju.

UGOSTITELJSTVO

Metodološka objašnjenja

Podaci o prometu u ugostiteljstvu prikupljeni su redovnim tromjesečnim izvještajima koja popunjavaju preduzeca u Federaciji BiH i Republici Srpskoj, a koja obavljaju ugostiteljsku djelatnost.

Ugostiteljska djelatnost je djelatnost pripremanje hrane i pružanja usluga prehrane, pripremanja i usluživanja pica i napitaka i pružanja smještajnih usluga.

Promet u ugostiteljstvu obuhvata vrijednost izvršenih ugostiteljskih usluga-posluživanja hranom, picima, smještaja i ostalih usluga koje se uobicajeno pružaju uz osnovne ugostiteljske usluge.

TOURISM

Notes on Methodology

Data on tourist turnover (number of guests and overnight stays) are collected from the monthly reports by business entities or parts of business entities, which provide accommodation services to tourists or act as agencies. The reports are usually made on the basis of registration records in guest books.

Data cover the number of arrivals and the number of guests and overnight stays.

A tourist is considered any person travelling outside of his place of permanent residence, and spending at least one night in catering or some other accommodation facility for one of the following reasons: rest, business, (congresses, fairs, exhibitions, mission of international organisation etc), health and participation in sports activities.

A domestic tourist is a person with permanent residence in B&H spending at least one night at a location in Bosnia and Herzegovina outside his or her place of normal accommodation or other accommodation facilities for guests.

A foreign tourist is any person with permanent residence outside B&H, but that temporally resides in B&H and spends at least one night in catering or in some other accommodation facility.

CATERING

Notes on Methodology

Data related to turnover in catering are collected at regular quarterly reports made by the enterprises in Federation B&H and Serbs Republic carrying out catering activities.

Catering activity is activity of food preparations and nutrition services, preparing and serving drinks as well as accommodation services.

Catering turnover involves the value of carried out catering services – food serving, drinks, accommodation and other services usually in conjunction with primary catering services

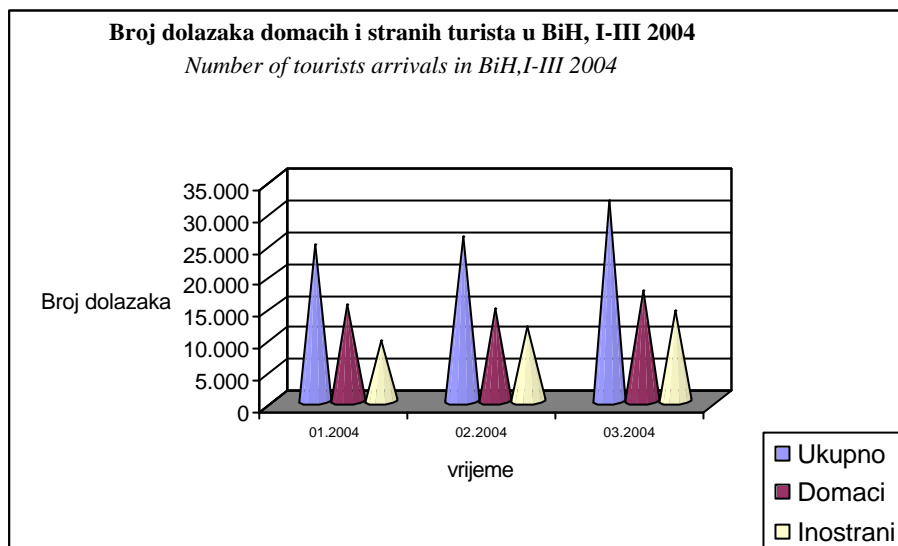
NIVO OBRADJE BOSNA I HERCEGOVINA
 DATA PROCESSING - LEVEL BOSNIA AND HERZEGOVINA

5 -1.1 Dolasci turista po zemlji prebivališta / Tourist arrivals by country of residence

Dolasci turista po zemlji prebivališta / Tourist arrivals by country of residence					
	01.2004	02.2004	03.2004	01-03.2004	
Ukupno	24.662	26.202	31.699	82.563	Total
Domaci	15.209	14.582	17.378	47.169	Domestic
Inostrani	9.453	11.659	14.321	35.433	Foreign
Hrvatska	1.995	2.070	2.523	6.588	<i>Croatia</i>
Srbija I Crna Gora	3.507	4.080	4.549	12.136	<i>Serbia and Monte Negro</i>
Makedonija	161	158	211	530	<i>Macedonia</i>
Slovenija	813	1.162	1.459	3.434	<i>Slovenia</i>
Albanija	19	9	25	53	<i>Albania</i>
Austrija	298	390	534	1.222	<i>Austria</i>
Belgija	69	75	78	222	<i>Belgium</i>
Bugarska	20	32	193	245	<i>Bulgaria</i>
Ceška	15	42	65	122	<i>Czech Republic</i>
Danska	75	51	79	205	<i>Denmark</i>
Finska	17	28	30	75	<i>Finland</i>
Francuska	159	149	192	500	<i>France</i>
Grcka	28	45	45	118	<i>Greece</i>
Holandija	135	64	143	342	<i>Netherlands</i>
Irska	21	64	53	138	<i>Ireland</i>
Island	1	1	3	5	<i>Iceland</i>
Italija	366	357	607	1.330	<i>Italy</i>
Izrael	4	11	6	21	<i>Israel</i>
Luksemburg	4	3	2	9	<i>Luxembourg</i>
Madarska	54	64	80	198	<i>Hungary</i>
Norveška	39	38	178	255	<i>Norway</i>
Poljska	48	33	20	101	<i>Poland</i>
Portugal	8	7	13	28	<i>Portugal</i>
Rumunija	36	62	49	147	<i>Romania</i>
Rusija	26	67	38	131	<i>Russia</i>
Njemacka	357	544	706	1.607	<i>Germany</i>
Slovacka	41	11	40	92	<i>Slovakia</i>
Španija	91	155	82	328	<i>Spain</i>
Švajcarska	31	60	87	178	<i>Switzerland</i>
Švedska	86	107	206	399	<i>Sweden</i>
Turska	125	308	223	656	<i>Turkey</i>
Velika Britanija	213	308	515	1.036	<i>Great Britain</i>
Ostale europske zemlje	56	121	192	369	<i>Other in Europe</i>
Australija	19	17	24	60	<i>Australia</i>
Egipat	4	10	10	24	<i>Egypt</i>
Iran	4	32	7	43	<i>Iran</i>
Japan	30	90	134	254	<i>Japan</i>
Kanada	42	59	104	205	<i>Canada</i>
Kina	17	69	12	98	<i>China</i>
Novi Zeland	3	5	9	17	<i>New Zealand</i>
SAD	278	431	704	1.413	<i>USA</i>
Ostale izvaneuropske zemlje	118	255	159	532	<i>Other non European countries</i>

NIVO OBRADE BOSNA I HERCEGOVINA
DATA PROCESSING - LEVEL BOSNIA AND HERZEGOVINA

Grafikon 1:
Graph 1:



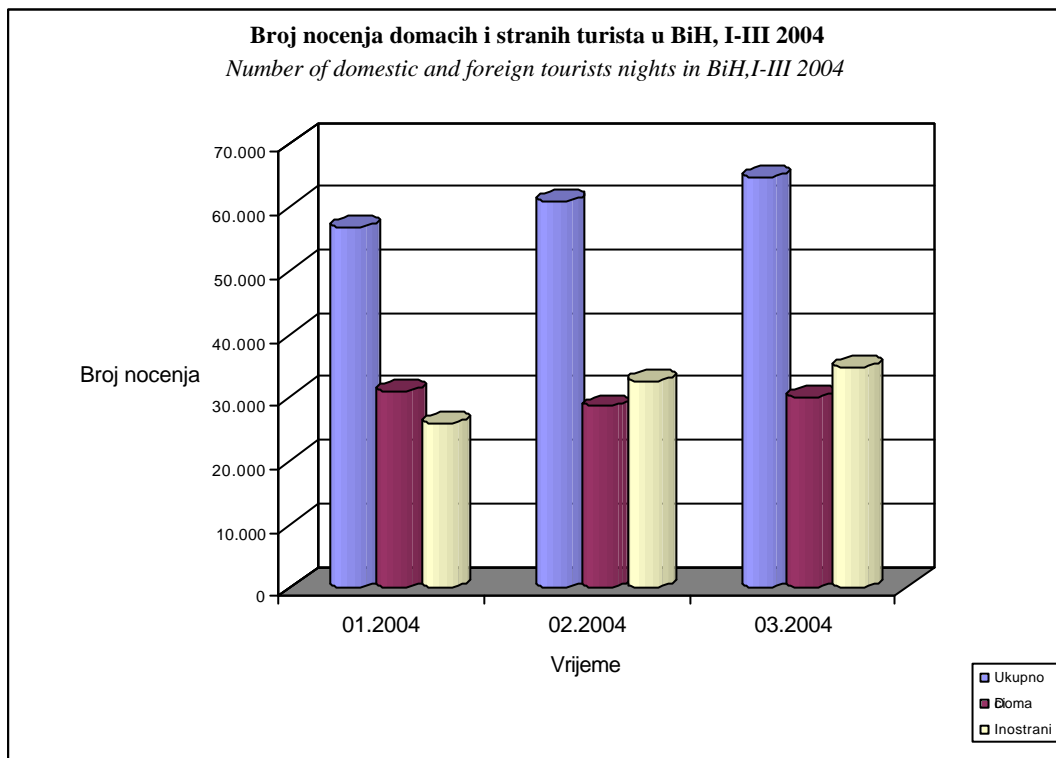
NIVO OBRADJE BOSNA I HERCEGOVINA
 DATA PROCESSING - LEVEL BOSNIA AND HERZEGOVINA

5 -1.2 Nocenja turista po zemlji prebivališta / Tourist overnights by country of residence

	Nocenja turista po zemlji prebivališta / Tourist nights by country of residence				
	01.2004	02.2004	03.2004	01-03.2004	
Ukupno	56.875	60.967	64.710	182.552	<i>Total</i>
Domaci	30.893	28.531	30.011	89.435	<i>Domestic</i>
Inostrani	25.982	32.436	34.699	93.117	<i>Foreign</i>
Hrvatska	4.892	4.131	4.734	13.757	<i>Croatia</i>
Srbija I Crna Gora	12.453	14.773	13.178	40.404	<i>Serbia and Monte Negro</i>
Makedonija	340	236	369	945	<i>Macedonia</i>
Slovenija	1.370	2.804	2.487	6.661	<i>Slovenia</i>
Albanija	36	30	67	133	<i>Albania</i>
Austrija	545	749	888	2.182	<i>Austria</i>
Belgija	123	226	128	477	<i>Belgium</i>
Bugarska	43	82	459	584	<i>Bulgaria</i>
Ceška	26	107	161	294	<i>Czech Republic</i>
Danska	141	111	173	425	<i>Denmark</i>
Finska	59	46	63	168	<i>Finland</i>
Francuska	400	279	365	1.044	<i>France</i>
Grcka	55	103	86	244	<i>Greece</i>
Holandija	372	125	434	931	<i>Netherlands</i>
Irska	38	129	143	310	<i>Ireland</i>
Island	6	1	11	18	<i>Iceland</i>
Italija	877	799	1.375	3.051	<i>Italy</i>
Izrael	10	13	20	43	<i>Israel</i>
Luksemburg	4	5	3	12	<i>Luxembourg</i>
Madarska	97	115	123	335	<i>Hungary</i>
Norveška	81	77	591	749	<i>Norway</i>
Poljska	155	78	42	275	<i>Poland</i>
Portugal	11	20	30	61	<i>Portugal</i>
Rumunija	61	94	120	275	<i>Romania</i>
Rusija	77	190	75	342	<i>Russia</i>
Njemacka	723	1.286	1.359	3.368	<i>Germany</i>
Slovacka	64	56	99	219	<i>Slovakia</i>
Španija	149	390	290	829	<i>Spain</i>
Švajcarska	61	18	163	242	<i>Switzerland</i>
Švedska	249	241	704	1.194	<i>Sweden</i>
Turska	287	1.399	481	2.167	<i>Turkey</i>
Velika Britanija	664	786	1.492	2.942	<i>Great Britain</i>
Ostale europske zemlje	77	250	389	716	<i>Other in Europe</i>
Australija	38	50	51	139	<i>Australia</i>
Egipat	17	23	35	75	<i>Egypt</i>
Iran	18	72	41	131	<i>Iran</i>
Japan	66	324	464	854	<i>Japan</i>
Kanada	135	123	477	735	<i>Canada</i>
Kina	22	141	12	175	<i>China</i>
Novi Zeland	8	11	20	39	<i>New Zealand</i>
SAD	802	1.140	1.982	3.924	<i>USA</i>
Ostale izvaneuropske zemlje	288	665	513	1.466	<i>Other non European countries</i>

NIVO OBRADJE BOSNA I HERCEGOVINA
DATA PROCESSING - LEVEL BOSNIA AND HERZEGOVINA

Grafikon 2:
Graph 2:



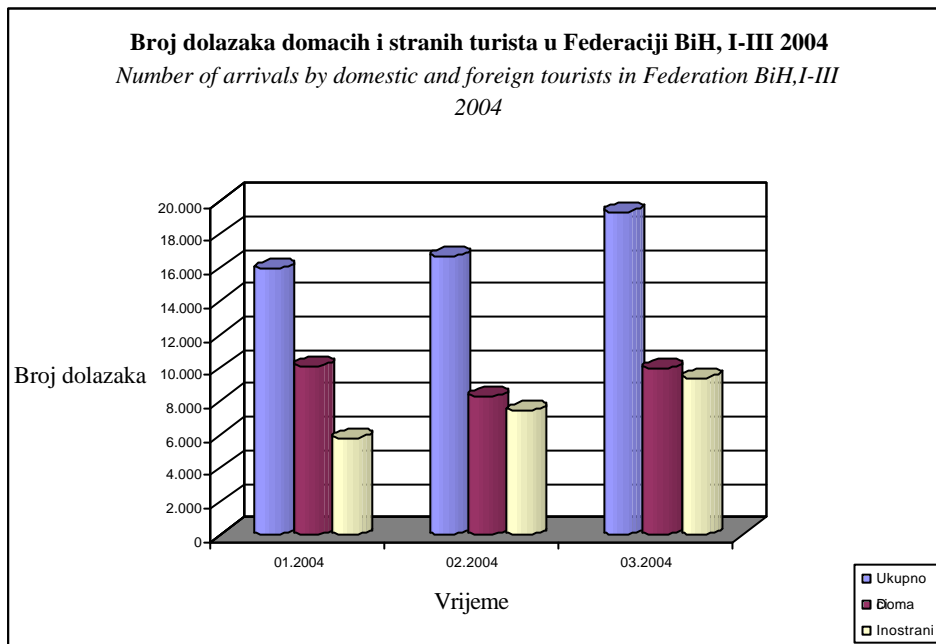
NIVO OBRADJE FEDERACIJA BiH
 DATA PROCESSING - LEVEL FEDERATION of B&H

5 -2.1 Dolasci turista po zemlji prebivališta / Tourist arrivals by country of residence

		Dolasci turista po zemlji prebivališta / Tourist arrivals by country of residence				
		01.2004	02.2004	03.2004	01-03.2004	
Ukupno		15.901	16.622	19.276	51.799	Total
Domaci		10.097	8.250	9.896	28.243	Domestic
Inostrani		5.804	7.372	9.380	22.556	Foreign
	Hrvatska	1.651	1.764	2.156	5.571	<i>Croatia</i>
	Srbija I Crna Gora	908	1.174	1.593	3.675	<i>Serbia and Monte Negro</i>
	Makedonija	141	122	169	432	<i>Macedonia</i>
	Slovenija	661	858	1.117	2.636	<i>Slovenia</i>
	Albanija	17	9	23	49	<i>Albania</i>
	Austrija	241	314	375	930	<i>Austria</i>
	Belgija	64	68	65	197	Belgium
	Bugarska	13	28	126	167	Bulgaria
	Ceška	12	39	53	104	Czech Republic
	Danska	64	36	69	169	Denmark
	Finska	11	21	23	55	Finland
	Francuska	134	132	128	394	France
	Grcka	22	42	29	93	Greece
	Holandija	118	52	118	288	Netherlands
	Irska	19	51	43	113	Ireland
	Island	1		3	4	Iceland
	Italija	278	260	482	1.020	Italy
	Izrael	1	7	6	14	Israel
	Luksemburg	4	3	2	9	Luxembourg
	Madarska	50	57	59	166	Hungary
	Norveška	28	24	127	179	Norway
	Poljska	39	25	14	78	Poland
	Portugal	6	7	11	24	Portugal
	Rumunija	25	61	42	128	Romania
	Rusija		49	22	71	Russia
	Njemacka	313	440	562	1.315	Germany
	Slovacka	37	7	21	65	Slovakia
	Španija	78	141	65	284	Spain
	Švajcarska	25	48	63	136	Switzerland
	Švedska	79	82	171	332	Sweden
	Turska	125	298	219	642	Turkey
	Velika Britanija	150	214	310	674	Great Britain
	Ostale europske zemlje	37	105	180	322	Other in Europe
	Australija	15	14	23	52	<i>Australia</i>
	Egipat	4	10	10	24	<i>Egypt</i>
	Iran	4	32	7	43	<i>Iran</i>
	Japan	26	66	104	196	<i>Japan</i>
	Kanada	35	44	46	125	<i>Canada</i>
	Kina	9	58	5	72	<i>China</i>
	Novi Zeland	3	5	7	15	<i>New Zealand</i>
	SAD	229	345	591	1.165	<i>USA</i>
	Ostale izvan europske zemlje	107	247	139	493	Other non European countries

NIVO OBRADJE FEDERACIJA BiH
DATA PROCESSING - LEVEL FEDERATION of B&H

Grafikon 3:
Graph 3:



NIVO OBRADJE FEDERACIJA BiH
 DATA PROCESSING - LEVEL FEDERATION of B&H

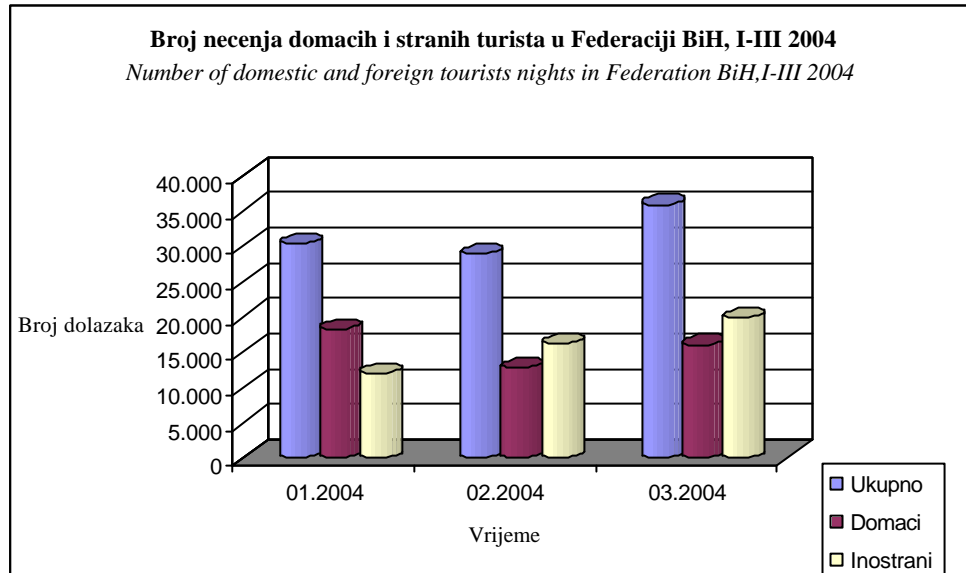
5 -2.2 Nocenja turista po zemlji prebivališta / Tourist overnights by country of residence

Nocenja turista po zemlji prebivališta / Tourist
 nights by country of residence

	01.2004	02.2004	03.2004	01-12.2004	
Ukupno	30.242	28.865	35.872	94.979	Total
Domaci	18.267	12.767	16.030	47.064	Domestic
Inostrani	11.975	16.098	19.842	47.915	Foreign
Hrvatska	3390	3334	4087	10.811	Croatia
Srbija I Crna Gora	1335	1685	2540	5.560	Serbia and Monte Negro
Makedonija	283	197	309	789	Macedonia
Slovenija	1130	1714	2016	4.860	Slovenia
Albanija	30	30	65	125	Albania
Austrija	452	633	729	1.814	Austria
Belgija	117	216	115	448	Belgium
Bugarska	24	78	371	473	Bulgaria
Češka	23	102	132	257	Czech Republic
Danska	121	85	156	362	Denmark
Finska	29	39	56	124	Finland
Francuska	355	251	276	882	France
Grčka	40	98	67	205	Greece
Holandija	340	102	389	831	Netherlands
Irska	35	103	115	253	Ireland
Island	6		11	17	Iceland
Italija	717	657	1145	2.519	Italy
Izrael	2	9	20	31	Israel
Luksemburg	4	5	3	12	Luxembourg
Madarska	90	106	101	297	Hungary
Norveška	66	58	247	371	Norway
Poljska	143	54	33	230	Poland
Portugal	9	20	28	57	Portugal
Rumunija	35	93	110	238	Romania
Rusija		102	57	159	Russia
Njemacka	626	1110	1146	2.882	Germany
Slovačka	42	25	54	121	Slovakia
Španija	133	369	263	765	Spain
Švajcarska	52		125	177	Switzerland
Švedska	233	196	623	1.052	Sweden
Turska	287	1389	476	2.152	Turkey
Velika Britanija	495	589	819	1.903	Great Britain
Ostale europske zemlje	56	233	375	664	Other in Europe
Australija	31	46	48	125	Australia
Egipat	17	23	35	75	Egypt
Iran	10	72	41	123	Iran
Japan	59	233	387	679	Japan
Kanada	106	102	90	298	Canada
Kina	12	130	5	147	China
Novi Zeland	8	11	14	33	New Zealand
SAD	712	1012	1769	3.493	USA
Ostale izvan europske zemlje	270	655	392	1.317	Other non European countries

NIVO OBRADJE FEDERACIJA BiH
DATA PROCESSING - LEVEL FEDERATION of B&H

Grafikon 4:
Graph 4:



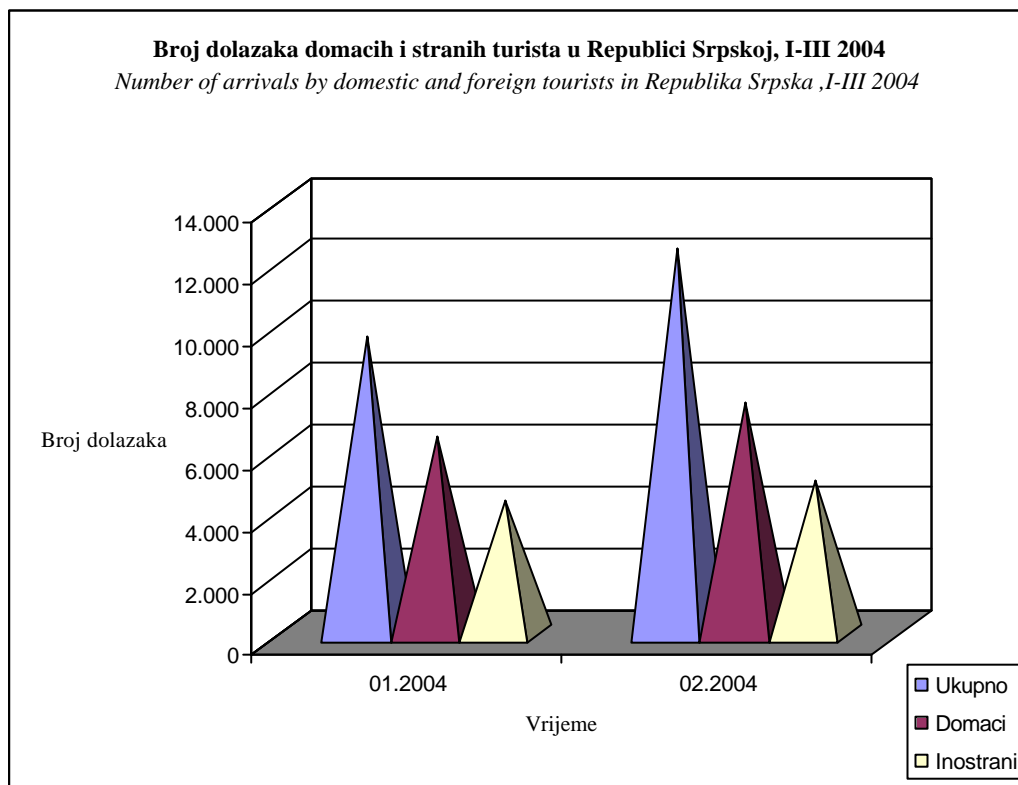
NIVO OBRADE REPUBLIKA SRPSKA

DATA PROCESSING - LEVEL REPUBLIC SRPSKA

5 -3.1 Dolasci turista po zemlji prebivališta / Tourist arrivals by country of residence

	Dolasci turista po zemlji prebivališta / Tourist arrivals by country of residence				
	01.2004	02.2004	03.2004	01-03.2004	
Ukupno	8.761	9.580	12.423	30.764	Total
Domaci	5112	6.332	7.482	18.926	Domestic
Inostrani	3649	4.287	4.941	12.877	Foreign
Hrvatska	344	306	367	1.017	Croatia
Srbija i Crna Gora	2599	2.906	2.956	8.461	Serbia and Monte Negro
Makedonija	20	36	42	98	Macedonia
Slovenija	152	304	342	798	Slovenia
Albanija	2		2	4	Albania
Austrija	57	76	159	292	Austria
Belgija	5	7	13	25	Belgium
Bugarska	7	4	67	78	Bulgaria
Ceška	3	3	12	18	Czech Republic
Danska	11	15	10	36	Denmark
Finska	6	7	7	20	Finland
Francuska	25	17	64	106	France
Grcka	6	3	16	25	Greece
Holandija	17	12	25	54	Netherlands
Irska	2	13	10	25	Ireland
Island		1		1	Iceland
Italija	88	97	125	310	Italy
Izrael	3	4		7	Israel
Luksemburg				0	Luxembourg
Madarska	4	7	21	32	Hungary
Norveška	11	14	51	76	Norway
Poljska	9	8	6	23	Poland
Portugal	2		2	4	Portugal
Rumunija	11	1	7	19	Romania
Rusija	26	18	16	60	Russia
Njemacka	44	104	144	292	Germany
Slovacka	4	4	19	27	Slovakia
Španija	13	14	17	44	Spain
Švajcarska	6	12	24	42	Switzerland
Švedska	7	25	35	67	Sweden
Turska		10	4	14	Turkey
Velika Britanija	63	94	205	362	Great Britain
Ostale europske zemlje	19	16	12	47	Other in Europe
Australija	4	3	1	8	Australia
Egipat				0	Egypt
Iran				0	Iran
Japan	4	24	30	58	Japan
Kanada	7	15	58	80	Canada
Kina	8	11	7	26	China
Novi Zeland			2	2	New Zealand
SAD	49	86	113	248	USA
Ostale izvaneuropske zemlje	11	8	20	39	Other non European countries

Grafikon 5:
Graph 5:



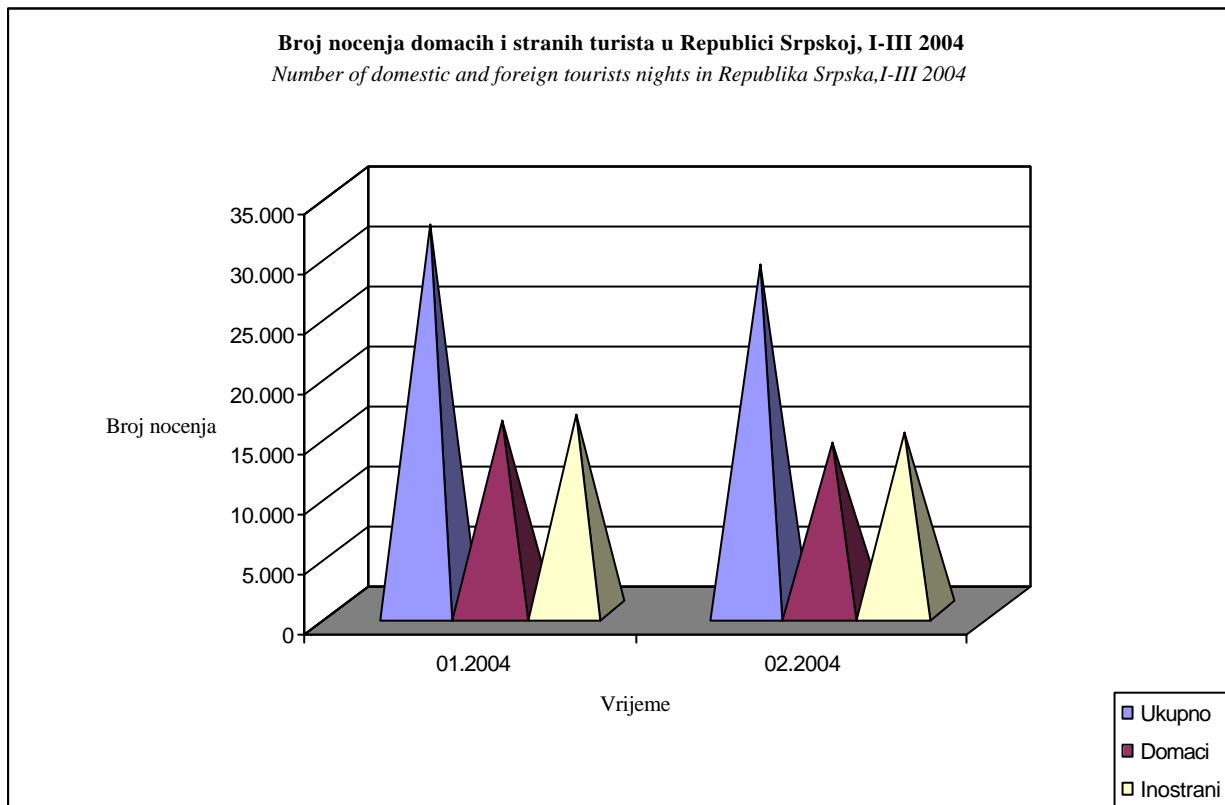
NIVO OBRADJE REPUBLIKA SRPSKA
DATA PROCESSING - LEVEL REPUBLIC SRPSKA

5 -3.2 Nojewa turista po zemlji prebivališta / Tourist overnights by country of residence

	Nocenja turista po zemlji prebivališta / Tourist nights by country of residence				
	01.2004	02.2004	03.2004	01-03.2004	
Ukupno	26.633	32.102	28.838	87.573	Total
Domaci	12626	15.764	13.981	42.371	Domestic
Inostrani	14007	16.338	14.857	45.202	Foreign
Hrvatska	1502	797	647	2.946	Croatia
Srbija i Crna Gora	11118	13088	10.638	34.844	Serbia and Monte Negro
Makedonija	57	39	60	156	Macedonia
Slovenija	240	1090	471	1.801	Slovenia
Albanija	6		2	8	Albania
Austrija	93	116	159	368	Austria
Belgija	6	10	13	29	Belgium
Bugarska	19	4	88	111	Bulgaria
Ceška	3	5	29	37	Czech Republic
Danska	20	26	17	63	Denmark
Finska	30	7	7	44	Finland
Francuska	45	28	89	162	France
Grčka	15	5	19	39	Greece
Holandija	32	23	45	100	Netherlands
Irska	3	26	28	57	Ireland
Island		1		1	Iceland
Italija	160	142	230	532	Italy
Izrael	8	4		12	Israel
Luksemburg				0	Luxembourg
Madarska	7	9	22	38	Hungary
Norveška	15	19	344	378	Norway
Poljska	12	24	9	45	Poland
Portugal	2		2	4	Portugal
Rumunija	26	1	10	37	Romania
Rusija	77	88	18	183	Russia
Njemacka	97	176	213	486	Germany
Slovacka	22	31	45	98	Slovakia
Španija	16	21	27	64	Spain
Švajcarska	9	18	38	65	Switzerland
Švedska	16	45	81	142	Sweden
Turska		10	5	15	Turkey
Velika Britanija	169	197	673	1.039	Great Britain
Ostale europske zemlje	21	17	14	52	Other in Europe
Australija	7	4	3	14	Australia
Egipt				0	Egypt
Iran	8			8	Iran
Japan	7	91	77	175	Japan
Kanada	29	21	387	437	Canada
Kina	10	11	7	28	China
Novi Zeland			6	6	New Zealand
SAD	90	128	213	431	USA
Ostale izvaneuropske zemlje	18	10	121	149	Other non European countries

NIVO OBRADJE REPUBLIKA SRPSKA
DATA PROCESSING - LEVEL REPUBLIC SRPSKA

Grafikon 6:
Graph 6:



6. STANOVNIŠTVO
POPULATION

STANOVNIŠTVO

Metodološka objašnjenja

Ovdje se daju samo kraca objašnjenja definicija jedinice promatranja.

Definicija jedinice promatranja

U statistici je jedinica promatranja rođenih svako rodeno i mrtvorodeno dijete.

Kao živorodeno smatra se ono dijete koje poslije rođenja, čak i za najkrace vrijeme pokazuje znake života (disanje, odnosno kucanje srca) bez obzira na trajanje trudnoce majke. Ako dijete ubrzo po rođenju umre, onda se najprije registruje kao živorodeno, a zatim kao umrlo. Ako je dijete rodeno, odnosno izvadeno iz tijela majke bez ikakvih znakova života, tj. ako nije disalo niti pokazivalo neki drugi znak života, kao što je kucanje srca ili pokreti mišica, a nošeno je duže od 28 sedmica (približno 7 mjeseci), smatra se mrtvorodenim. Ne registruje se kao rođenje izbacivanje mrtvog ploda koji je bio nošen manje od 28 sedmica. Za prikupljanje statistickih podataka o živorodenoj i mrtvorodenoj djeci služi statisticki listić o rođenju.

U statistici je jedinica promatranja umrlih svako umrlo lice. Za prikupljanje podataka o umrlim licima služi statisticki listić o slucaju smrti. Umrlo je svako živorodeno lice kod kojeg je nastupio trajni prestanak svih vitalnih funkcija koje zapocinju rođenjem bez mogućnosti ponovnog oživljavanja. Ovdje nisu ukljuceni mrtvorodeni. Umrlo dojenčadi smatraju se djeca koja su umrla prije navršene prve godine života.

Kod statistike skopljenih brakova jedinica promatranja je svaki zakonito skopljeni brak, a kod statistike razvoda svaki brak koji je pravosnažnom presudom nadležnog suda razveden, poništen, odnosno proglašen nevažecim. Za prikupljanje podataka o sklopljenim brakovima služi statisticki listić o sklopljenom braku, a o razvedenim brakovima statisticki listić o razvedenom braku.

Podaci dani u tabelama su rezultat statistickih istraživanja koja se provode u entiteskim zavodima za statistiku, a dobijeni su na osnovu mjesečnih izvještaja maticara.

Vitalni indeks je odnos između broja živorodenih i broja umrlih.

POPULATION

Notes on Methodology

In this text we present only the definitions for the observation units

Definitions of the observation units

In statistics, the unit of observation of a born person includes both live births and stillborn babies.

A live birth is any child who exhibits signs of life at birth. Live birth is the complete expulsion or extraction from its mother of the product of conception, irrespective of the duration of the pregnancy, which, after such separation, breathes or shows any other evidence of life such as heartbeat, pulsation of the umbilical cord, or definite movements of voluntary muscles, whether or not the umbilical cord has been cut or the placenta detached. If a product of such a birth dies, it is first registered as live-birth and then as dead. For collection of data on live-born and stillborn children a statistical questionnaire about birth is employed.

In statistics, the unit of observation of a dead person is every dead person. For collection of data on dead persons, a statistical questionnaire about death is employed. A dead person is every live-born person in whom there is permanent disappearance of all evidence of life at any time after live birth has taken place, without chance of resuscitation. Stillborn children are not included here. A dead infant is considered to be a child who dies at an age of less than one year.

In statistics regarding marriages, the unit of observation is every legal marriage, and in statistics regarding divorces, every marriage that was divorced, revoked, or proclaimed invalid by a valid decision of the municipal court in charge. For data collection regarding marriages and divorces a statistical questionnaire is employed for each.

Data presented in the tables are gathered by statistical surveys realised in the Institutions for statistics in the entities, collected through monthly reports of registrars.

The vital index is a ratio between live births and death.

NIVO OBRADJE BOSNA I HERCEGOVINA
DATA PROCESSING - LEVEL BOSNIA AND HERZEGOVINA

6 - 1.1 Prirodno kretanje stanovništva po mjesecima

Natural demographic trends

- prethodni podaci / previous dates

Mjesec / Month	Živorodeni / Livebirths	Umrli / Deaths	Prirodni priraštaj / Natural increase ment	Umrli dojencad / Infant deaths	Broj sklopljenih brakova / Number of marriages	Broj razvedenih brakova / Number of divorces	Vitalni indeks / Vital index
01.03	2.419	2.359	60	20	983	69	1,03
02.03	2.578	2.460	118	26	1.251	120	1,05
03.03	2.586	2.702	-116	23	1.344	171	0,96
04.03	2.871	2.859	12	19	1.382	133	1,00
05.03	2.909	2.644	265	19	1.818	157	1,10
06.03	2.941	2.424	517	24	1.493	89	1,21
07.03	3.129	2.517	612	16	2.243	115	1,24
08.03	3.268	2.358	910	22	2.867	123	1,39
09.03	3.155	2.448	707	22	1.832	155	1,29
10.03	3.232	2.657	575	19	2.226	132	1,22
11.03	2.573	2.425	148	20	1.526	104	1,06
12.03	3.116	3.053	63	21	1.502	111	1,02
01-12.03	34.777	30.906	3.871	251	20.467	1.482	1,13

NIVO OBRADJE FEDERACIJA BOSNE I HERCEGOVINE
DATA PROCESSING - LEVEL FEDERATION B&H

6 - 2.1 Prirodno kretanje stanovništva po mjesecima

Natural demographic trends

- prethodni podaci / previous dates

Mjesec / Month	Živorodeni / Livebirths	Umrli / Deaths	Prirodni priraštaj / Natural increase ment	Umrli dojencad / Infant deaths	Broj sklopljenih brakova / Number of marriages	Broj razvedenih brakova / Number of divorces	Vitalni indeks / Vital index
01.03	1.558	1.216	342	10	578	33	1,28
02.03	1.674	1.350	324	22	759	61	1,24
03.03	1.665	1.462	203	16	871	91	1,14
04.03	1.921	1.690	231	18	978	58	1,14
05.03	1.885	1.437	448	15	1.042	68	1,31
06.03	1.921	1.383	538	16	944	42	1,39
07.03	2.057	1.369	688	12	1.451	49	1,50
08.03	2.157	1.417	740	18	1.884	64	1,52
09.03	2.073	1.419	654	20	1.134	70	1,46
10.03	2.161	1.501	660	12	1.440	63	1,44
11.03	1.653	1.377	276	13	859	61	1,20
12.03	2.044	1.781	263	17	888	52	1,15
01-12.03	22.769	17.402	5.367	189	12.828	712	1,31

6 - 3.1 Prirodno kretanje stanovništva po mjesecima

Natural demographic trends

- prethodni podaci / previous dates

Mjesec / Month	Živorodeni / Livebirths	Umrli / Deaths	Prirodni priraštaj / Natural increase ment	Umrli dojencad / Infant deaths	Broj sklopljenih brakova / Number of marriages	Broj razvedenih brakova / Number of divorces	Vitalni indeks / Vital index
01.03	861	1.143	-282	10	405	40	0,75
02.03	904	1.110	-206	4	492	61	0,81
03.03	921	1.240	-319	7	473	77	0,74
04.03	950	1.169	-219	1	404	75	0,81
05.03	1.024	1.207	-183	4	776	89	0,85
06.03	1.020	1.041	-21	8	549	47	0,98
07.03	1.072	1.148	-76	4	792	66	0,93
08.03	1.111	941	170	4	983	59	1,18
09.03	1.082	1.029	53	2	698	85	1,05
10.03	1.071	1.156	-85	7	786	69	0,93
11.03	920	1.048	-128	7	667	43	0,88
12.03	1.072	1.272	-200	4	614	59	0,84
01-12.03	12.008	13.504	-1.496	62	7.639	770	0,89

7. TRGOVINA
TRADE

TRGOVINA

Metodološka objašnjenja

Statistika robne razmjene sa inostranstvom urađena je od strane Agencije za statistiku BiH u saradnji sa Federalnim zavodom za statistiku i Republickim zavodom za statistiku Republike Srpske.

Korišteni metod zasniva se na metodološkim preporukama Statistickog ureda Evropske Unije (Eurostat) i statistickog ureda Ujedinjenih nacija.

Predmet promatranja statistike robne razmjene sa inostranstvom su robe koje se izvoze odnosno uvoze.

Izvoz obuhvata svu robu koja se izvozi iz zemlje, a potjece iz domace proizvodnje ili unutrašnjeg robnog prometa.

Uvoz obihvata svu robu koja je uvezena iz inostranstva radi potrošnje u zemlji.

Podaci uključuju izvoz i uvoz ostvaren na osnovu poslova oplemenjivanja tj. poslova obrade, dorade i prerade.

Promet na osnovi poslova oplemenjivanja može biti aktivan u slučaju kada se privremeno uvozi roba u zemlju da bi se tu obavili poslovi obrade, dorade ili prerade nakon čega se roba vraća u inostranstvo. Ovaj promet je pasivan u slučaju kada se roba privremeno izvozi u inostranstvo da bi se tamo obavila prerada, obrada ili dorada, a nakon toga se roba vraća u zemlju.

Izvor podataka za statistiku robne razmjene sa inostranstvom jesu carinske deklaracije o izvozu i uvozu roba, koje u ime poslovnog subjekta, podnose carinarnicama otpremnicama preduzeća prilikom carinjenja robe. Za prikupljanje i kontrolu ispravnosti carinskih deklaracija odgovorne su Carinske uprave entiteta, od kojih zavodi za statistiku entiteta preuzimaju kontrolisane carinske deklaracije u obliku slogova na magnetnom mediju i nakon obrade dostavljaju ih Agenciji za statistiku BiH.

Od 1998. godine carinski postupak u entitetima odvija se u skladu sa Opštim pravilima za carinske tarife ("Službeni glasnik BiH", broj 1/98).

Vrijednost izvoza i uvoza iskazuje se u konvertibilnim markama (KM). U tabelama za 1997 i 1998 godinu urađena je konverzija vrijednosti robnog prometa iz USD prema KM, u skladu sa važećim prosječnim kursom Centralne Banke BiH.

Zbog nedostatka sveobuhvatnih podataka o robnoj razmjeni sa državama, u tabelama je prikazana robna razmjena sa jednim brojem država koje se mogu izdvojiti kao vodeći trgovonski partneri BiH.

TRADE

Notes on Methodology

Statistics of foreign trade is prepared by Agency for Statistics of B&H in the cooperation with the Institute of Statistics of Republika Srpska and Institute of Statistics of Federation B&H.

Used methodologies is based on the methodological recommendations of Statistical Office of European Union (Eurostat) and Statistical Office of United Nations.

As object of observing in foreign trade are all goods exported or imported.

Exports refer to all exported goods which origin by domestic production, respectively from home turnover trade.

Imports cover all imported goods from abroad due to its consuming in country.

In the framework of regular exports and imports, it is included reworking trade, namely export and import based on finishing process, processing and treatment. The active reworking trade cover imports for processing and exports after that, while passive reworking trade cover exports for processing and import after that.

Source of data for foreign trade are custom declaration (SAD) on export and imports, which on behalf of legal entity, delivering of shipping company processing goods.

The custom administrations of entity are authorized to collect and control of custom declarations.

The Institutions of Statistics of entity take over the checked custom declarations. In terms of letters on magnetic medium and after processing they send to Agency for Statistics of B&H.

Since 1998 custom procedure in entity are being performed in accordance with the general rules for custom tariff (Official gazeta B&H, No 1/98).

Value of imports and exports is accounted by convertible marks (KM). In tables for 1997 and 1998 were done conversion of value of foreign trade from USD to KM, accordingly validity average of exchange rate of Central Bank of B&H.

Due to lack of comprehensive data on foreign trade, in tables are given statistics with a number of countries which could separate as leading trade partners of B&H.

Za statistiku robne razmjene sa inostranstvom osnovni kriterij podjele po zemljama jeste zemlja namjene kod izvoza, odnosno porijekla kod uvoza. Zemlje namjene je zemlja kojoj je namjenjena potrošnja izvezenih proizvoda ili njihova dalja prerada. Zemlja porijekla je zemlja u kojoj je roba proizvedena ili je iz nje porijeklom.

Da bi se dala realnija slika ocjena sadašnje vrijednosti robnog prometa biH sa inostranstvom, prikazani su podaci o robnoj razmjeni biH sa inostranstvom iz 1990. godine.

Vrijednost robe u spoljnjoj trgovini iskazana je na osnovu pariteta franko bivša jugoslovenska granica: FOB cijene za izvoz, CIF cijene na uvoz.

Konverzija tadašnjeg JU/dinara izvršena je prema važećem deviznom kursu u odnosu na njemacku marku, u omjeru $1 \text{ DEM} = 700,00 \text{ din}$.

Klasifikacija izvoza i uvoza roba u spoljnjoj trgovini u 1990. godini vršila se prema Nomenklaturi statistike spoljnje trgovine koja se bazirala na Standardnoj medunarodnoj trgovinskoj klasifikaciji SITC Rev.3.

Podaci za 1997, 1998, 1999 i 2000 godinu takocer su uradeni na bazi iste klasifikacije SITC Rev.3, tako da je omogucena njihova medusobna komparabilnost.

Collection data of foreign trade by countries are performed on the basis principle by country for which exported goods are intended by export, or the country of origin by imports. That means, that in export registered a country in which the goods spending or processing, and in import country in which the goods by manufacturing or finishing process led in status in which are imported.

In order to give a real picture on currently value of foreign trade of B&H, it was presented data on foreign trade of B&H from 1990.

Value for the goods in foreign trade is stated on the basis of parity of franco ex-Yugoslavia border: FOB prices for export, CIF prices for imports.

Conversion Yu-dinar was done to valided exchange rate in the relation Deuchland mark, 1 DEM = 700,00 dinars.

The goods are classified in 1990 according to the Nomenclature of Statistics Foreign Trade based on the Standard International Trade Classification SITC Rev.3.

Data for 1997, 1998, 1999 and 2000 are also prepared on the basic same classification of SITC Rev.3, so that it was enabled its mutual comparasion.

7 - 1.1 Robni promet BiH sa inostranstvom

Goods transactions of B&H with the rest of the world

Izvoz-uvoz za period I-III 2004 godine / Export-import for I-III 2004

		(000 KM)
		I-III 2004
Obim razmjene/Volume of exchange		2.382.224
Izvoz/Export		615.792
Uvoz/Import		1.766.432
Trgovinski bilans		1.150.640
<i>Trade balance</i>		

7 - 1.2 Robni promet BiH sa inostranstvom

Goods transactions of B&H with the rest of the world

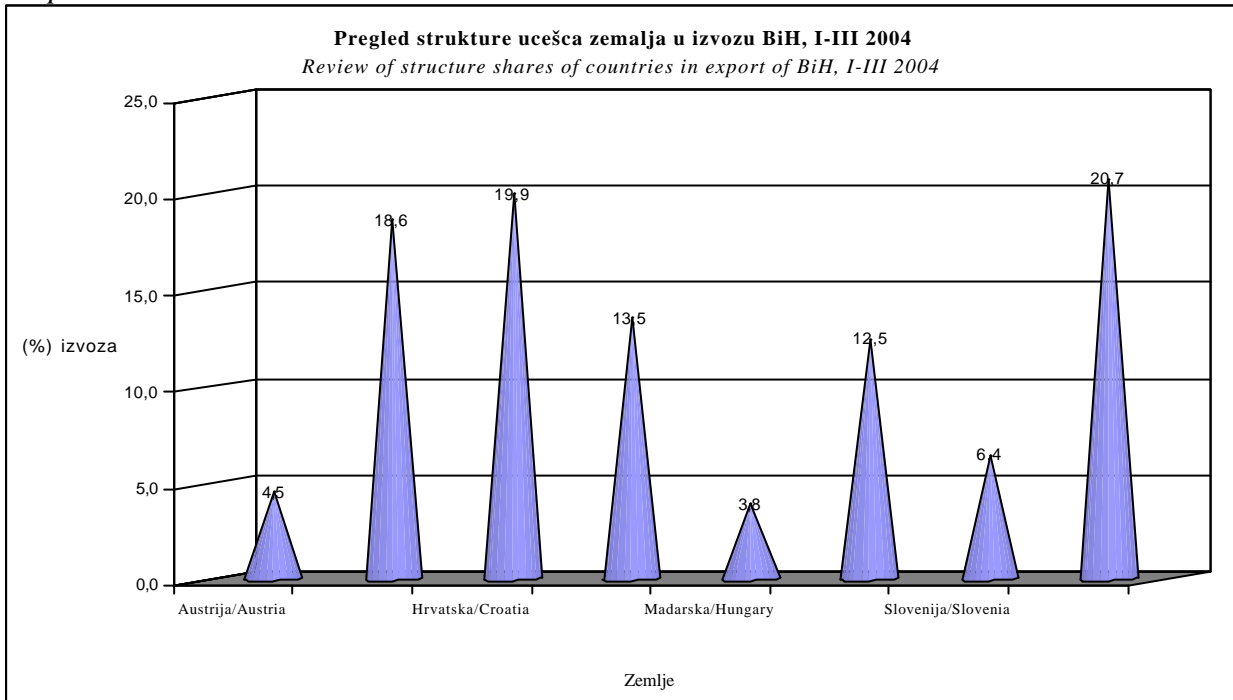
Izvoz-uvoz po zemljama namjene/porijekla, za I-III 2004 godine /

Export-import by countries of origin or destination, for I-III 2004

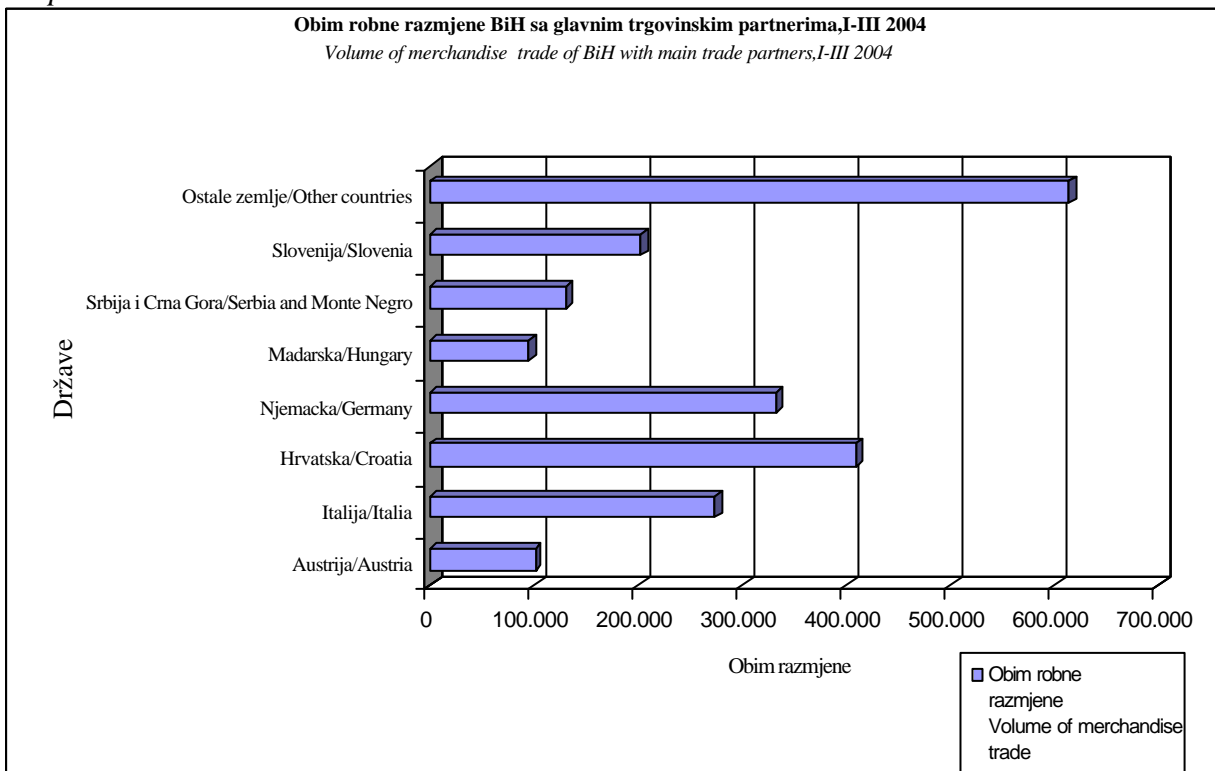
				(u 000 KM)
	Obim robne razmjene	Izvoz	Uvoz	Trgovinski bilans
	<i>Volume of merchandise trade</i>	<i>Export</i>	<i>Imports</i>	<i>Trade balance</i>
Austrija/Austria	100.920	27.733	73.187	-45.454
Italija/Italia	273.641	114.382	159.259	-44.877
Hrvatska/Croatia	409.449	122.731	286.718	-163.987
Njemacka/Germany	333.129	83.272	249.857	-166.585
Madarska/Hungary	95.729	23.633	72.096	-48.463
Srbija i Crna Gora/Serbia and Monte Negro	131.129	76.730	54.399	22.331
Slovenija/Slovenia	203.477	39.718	163.759	-124.041
Ostale zemlje/Other countries	614.633	127.593	487.040	-359.447
Ukupno/Total	2.382.224	615.792	1.766.432	-1.150.640

NIVO OBRADJE BOSNA I HERCEGOVINA
DATA PROCESSING - LEVEL BOSNIA AND HERZEGOVINA

Grafikon 1:
Graph 1:



Grafikon 2:
Graph 2:



7 - 1.3 Pregled robnog prometa BiH sa inostranstvom u periodu 1997-2003

	1997	1998	1999	2000	2001
Obim robne razmjene <i>Turnover of transaction</i>	3.646.896	5.661.009	6.021.750	8.847.539	8.971.771
Izvoz/Export	480.227	1.064.175	1.149.218	2.264.390	2.341.545
Uvoz/Import	3.166.669	4.596.834	4.872.532	6.582.609	6.630.226
Trgovinski bilans/ <i>Trade balance</i>	-2.686.442	-3.532.659	-3.723.314	-4.317.679	4.228.681

7 - 1.4 Struktura robnog prometa sa inostranstvom, I-III 2004

Structure of merchandise trade of B&H with abroad, I-III 2004

	Izvoz <i>Export</i>	Uvoz <i>Imports</i>
Ukupno/Total	100,0	100,0
Austrija/Austria	4,5	4,1
Italija/Italia	18,6	9,0
Hrvatska/Croatia	19,9	16,2
Njemacka/Germany	13,5	14,1
Madarska/Hungary	3,8	4,1
Srbija i Crna Gora/Serbia and Monte Negro	12,5	3,1
Slovenija/Slovenia	6,4	9,3
Ostale zemlje/Other countries	20,7	27,6

NIVO OBRADNE BOSNA I HERCEGOVINA
DATA PROCESSING - LEVEL BOSNIA AND HERZEGOVINA

7 - 1.3 Review goods transactions of B&H with the rest of the world 1997-2003
 (000 KM)

2002	2003	I-III 2004	Index <u>1998</u> 1997	Index <u>1999</u> 1998	Index <u>2000</u> 1999	Index <u>2001</u> 2000	Index <u>2002</u> 2001	Index <u>2003</u> 2002
9.984.519	10.269.380	2.382.224	155,2	106,4	146,9	101,4	123,5	102,9
2.089.652	2.349.189	615.792	221,6	108,0	197,0	103,4	89,2	112,4
7.894.867	7.920.191	1.766.432	145,2	106,0	135,1	100,7	119,1	100,3
5.805.215	5.571.002	1.150.640	131,5	105,4	116,0	-97,9	137,3	96,0

NIVO OBRADJE FEDERACIJA BOSNE I HERCEGOVINE
DATA PROCESSING - LEVEL FEDERATION OF B&H

7 - 2.1 Izvoz i uvoz za period I-III 2004

Export and import, I-III 2004

	I-III 2004
Obim razmjene/ <i>Volume of exchange</i>	1.750.179
Izvoz/ <i>Export</i>	468.496
Uvoz/ <i>Import</i>	1.281.683

7 - 2.2 Izvoz i uvoz po zemljama namjene/porijekla I-III 2004

Export and import bz countries of origin or destination, I-III 2004

(u 000 KM)

	Obim robne razmjene <i>Volume of merchandise trade</i>	Izvoz <i>Export</i>	Uvoz <i>Imports</i>	Trgovinski bilans <i>Trade balance</i>
Austrija/ <i>Austria</i>	72.371	23.992	48.379	-24.387
Italija/ <i>Italia</i>	226.686	97.584	129.102	-31.518
Hrvatska/ <i>Croatia</i>	345.411	106.082	239.329	-131.797
Njemacka/ <i>Germany</i>	278.433	73.318	205.115	-131.797
Madarska/ <i>Hungary</i>	64.286	22.020	42.266	-20.246
Srbija i Crna Gora/ <i>Serbia and Monte Negro</i>	57.159	32.917	24.242	8.675
Slovenija/ <i>Slovenia</i>	165.764	29.724	136.040	-106.316
Ostale zemlje/ <i>Other countries</i>	540.069	82.859	457.210	-374.351
Ukupno/ <i>Total</i>	1.750.179	468.496	1.281.683	-813.187

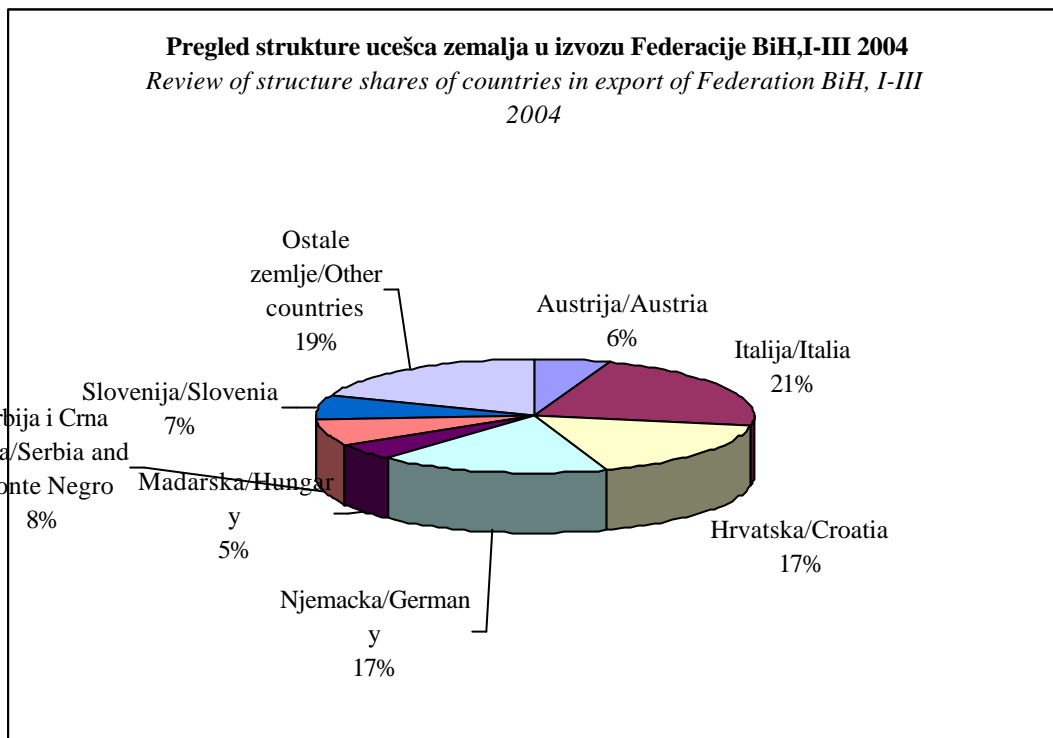
7 - 2.3 Struktura robnog prometa Fed BiH sa inostranstvom I-III 2004

Structure of merchandise trade of Fed BiH with abroad, I-III 2004

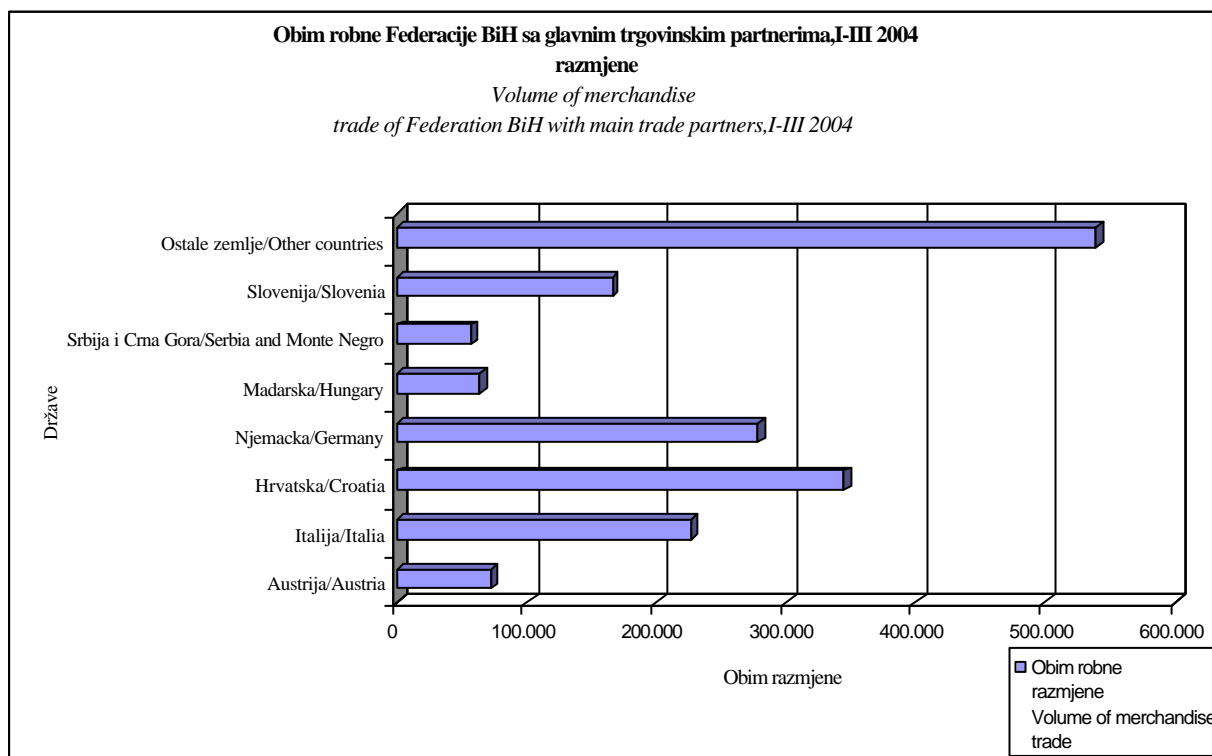
(%)

	Izvoz <i>Export</i>	Uvoz <i>Imports</i>
Ukupno/ <i>Total</i>	100,0	100,0
Austrija/ <i>Austria</i>	5,1	3,8
Italija/ <i>Italia</i>	20,8	10,1
Hrvatska/ <i>Croatia</i>	15,6	16,0
Njemacka/ <i>Germany</i>	15,6	16,0
Madarska/ <i>Hungary</i>	4,7	3,3
Srbija i Crna Gora/ <i>Serbia and Monte Negro</i>	7,0	1,9
Slovenija/ <i>Slovenia</i>	6,3	10,6
Ostale zemlje/ <i>Other countries</i>	17,7	35,7

Grafikon 3:
Graph 3:



Grafikon 4:
Graph 4:



7 - 3.1 Izvoz i uvoz za period I-III 2004

Export and import, I-III 2004

	(u 000 KM) I-III 2004
Obim razmjene/Volume of exchange	632.045
Izvoz/Export	147.296
Uvoz/Import	484.749
Trgovinski bilans	337.453
<i>Trade balance</i>	

7 - 3.2 Izvoz i uvoz po zemljama namjene/porijekla I-III 2004

Export and import bz countries of origin or destination, I-III 2004

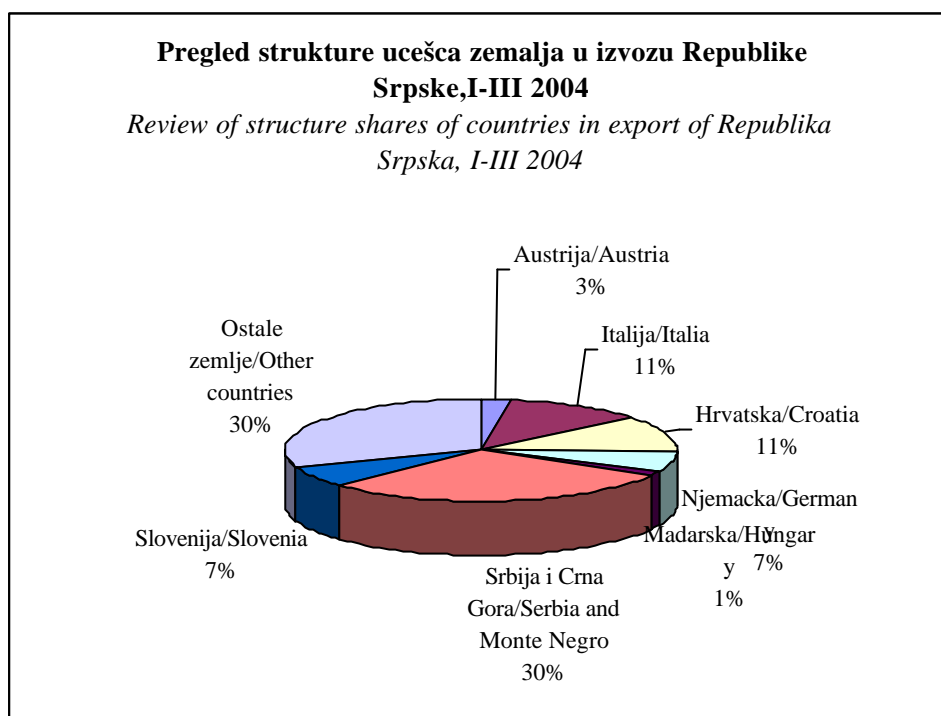
				(u 000 KM)
	Obim robne razmjene	Izvoz	Uvoz	Trgovinski bilans
	<i>Volume of merchandise trade</i>	<i>Export</i>	<i>Imports</i>	<i>Trade balance</i>
Austrija/ Austria	28.549	3.741	24.808	-21.067
Italija/ Italia	46.955	16.798	30.157	-13.359
Hrvatska/ Croatia	64.038	16.649	47.389	-30.740
Njemacka/ Germany	54.696	9.954	44.742	-34.788
Madarska/ Hungary	31.443	1.613	29.830	-28.217
Srbija i Crna Gora/ Serbia and Monte Negro	73.970	43.813	30.157	13.656
Slovenija/ Slovenia	37.713	9.994	27.719	-17.725
Ostale zemlje/ Other countries	74.564	44.734	29.830	14.904
Ukupno/ Total	632.045	147.296	484.749	-337.453

7 - 3.3 Struktura robnog prometa RS sa inostranstvom I-III 2004

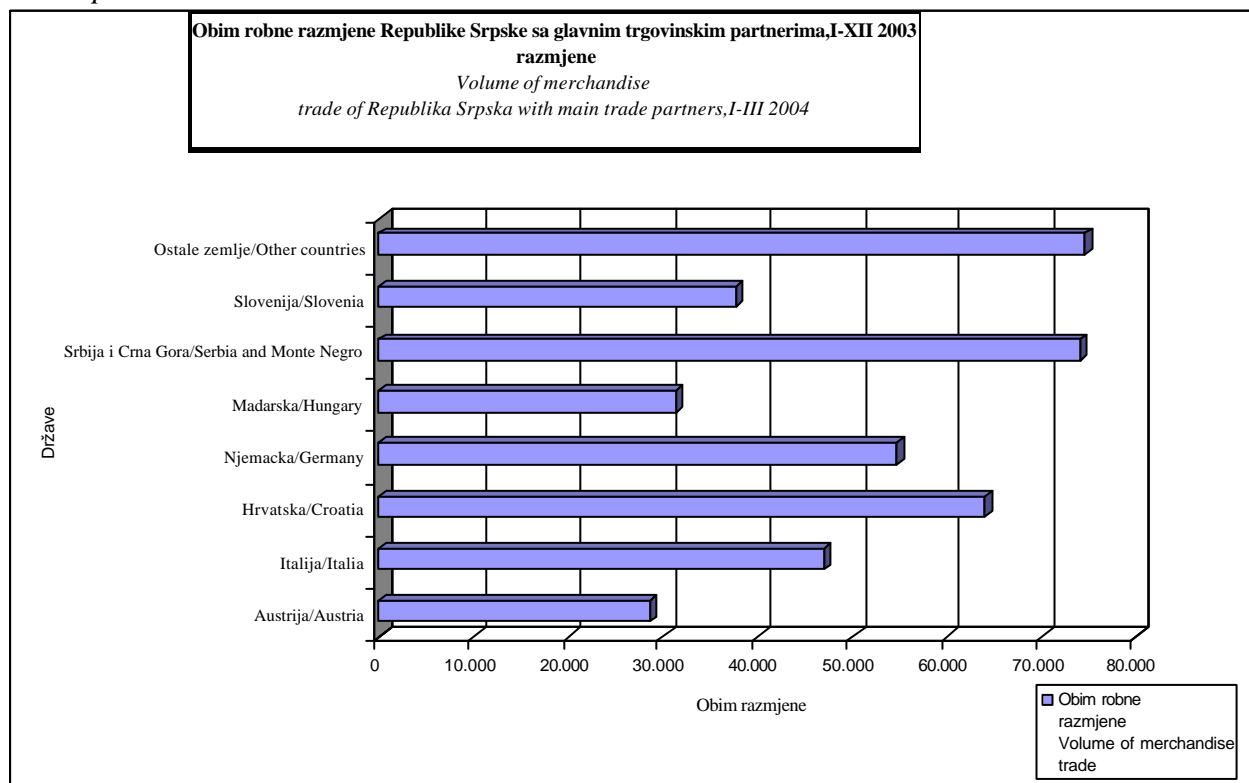
Structure of merchandise trade of RS BiH with abroad, I-III 2004

		(%)
	Izvoz	Uvoz
	<i>Export</i>	<i>Imports</i>
Ukupno/ Total	100,0	100,0
Austrija/ Austria	2,5	5,1
Italija/ Italia	11,4	6,2
Hrvatska/ Croatia	11,3	9,8
Njemacka/ Germany	6,8	9,2
Madarska/ Hungary	1,1	6,2
Srbija i Crna Gora/ Serbia and Monte Negro	29,7	6,2
Slovenija/ Slovenia	6,8	5,7
Ostale zemlje/ Other countries	30,4	6,2

Grafikon 5:
Graph 5:



Grafikon 6:
Graph 6:



BHAS/BHAS
AGENCIJA ZA STATISTIKU BOSNE I HERCEGOVINE
AGENCIJA ZA STATISTIKU BOSNE I HERCEGOVINE
AGENCY FOR STATISTICS OF BOSNIA AND HERZEGOVINA
Trg Bosne i Hercegovine 1
Trg Bosne i Hercegovine 1
Tel: (387 33) 22 06 22
Faks: (387 33) 22 06 22
e-mail: bhas@bih.net.ba

U narednim biltenima Agencija za statistiku Bosne i Hercegovine }e publikovati podatke o robnom prometu BiH sa inostranstvom, transportu, Šumarstvu, turizmu, industriji, trgovini, gradevinarstvu i ugostiteljstvu.

Next publications will cover data on foreign trade of B&H, transport, forestry, tourism, industry, trade, construction and hotels and restaurants.

Cijena / Unit Price 40 KM