



SAOPŠTENJE

FIRST RELEASE



Molimo korisnike da prilikom upotrebe podataka obavezno navedu izvor
Users are kindly requested to mention the data source

GODINA/ YEAR I

SARAJEVO, 20. 05. 2015.

BROJ/ NUMBER 1

BRUTO DOMAĆI PROIZVOD (rashodni pristup) –Kvartalni podaci *GROSS DOMESTIC PRODUCT (expenditure approach) – Quarterly data*

Agencija za statistiku BiH (BHAS), u ovom saopćenju, prvi put objavljuje, kvartalne procjene Bruto domaćeg proizvoda (BDP) prema rashodnom pristupu za BiH. Procjene su raspoložive za period 2008. – 2013. godine. Pored procjena osnovnih rashodnih kategorija, date su i procjene izdataka domaćinstava za krajnju potrošnju, prema Klasifikaciji individualne potrošnje prema namjeni (COICOP), na nivou grupe .

Aktivnosti na uspostavi historijske serije kvartalnih procjena Bruto domaćeg proizvoda prema rashodnom pristupu, implementirane su uz tehničku podršku Statističkog odjela Međunarodnog monetarnog fonda. Osiguranjem sredstava Vlade Japana Međunarodni monetarni fond je imenovao gospodina Segismundo Fasslera za savjetnika za statistiku realnog sektora u BiH, uz čiju metodološku i tehničku pomoć su realizovane navedene aktivnosti.

Uspostava sistema kompilacije kvartalnih nacionalnih računa u BiH je važan korak u daljem razvoju nacionalne statistike. Serije kvartalnog BDP-a, kako prema proizvodnom tako i prema rashodnom pristupu, pružaju pravovremenu mjeru ekonomskog razvoja, te su stoga korisno sredstvo za ekonomske analize i politike. Kvartalne serije omogućavaju takođe i rane procjene godišnjeg BDP-a.

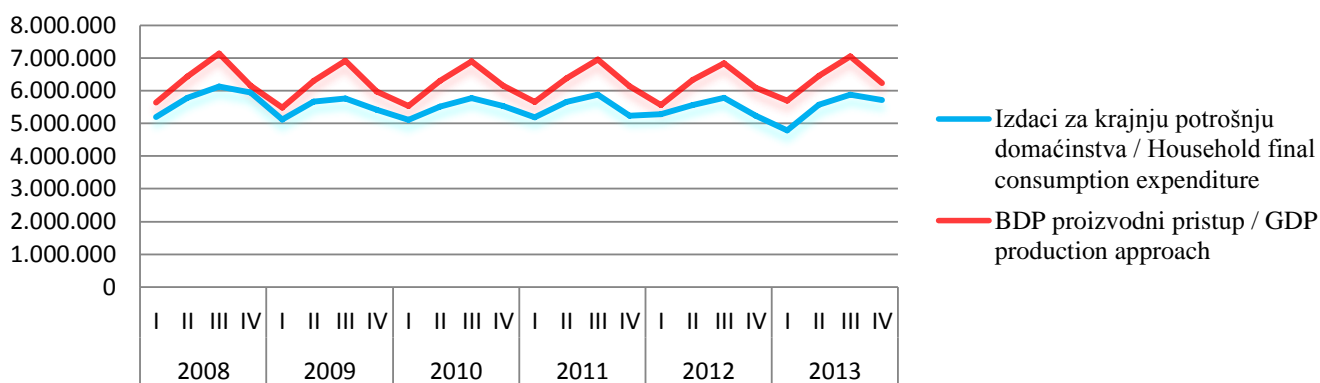
In this First Release, the Agency for Statistics for Bosnia and Herzegovina (BHAS) presents for the first time compiled quarterly estimates of gross domestic product by expenditure approach (GDP) for BiH. Estimates are available for the period 2008-2013. In addition to the estimates of the main expenditure components, the Household final consumption expenditure estimates have been presented by Classification of individual consumption (COICOP) at group level.

Activities for establishing the historical series of quarterly estimates of GDP by expenditure approach, have been implemented with technical support of Statistics Department of International Monetary Fund. By provision of funds, the Government of Japan enabled Statistics Department of International Monetary Fund appointed Mr Segismundo Fassler, as the Real Sector Statistics Advisor to Bosnia and Herzegovina, with whose methodological and technical assistance these activities were implemented.

The establishment of a quarterly compilation system of national accounts at the BiH level is an important milestone in the development of the national statistics. Quarterly GDP series provide a timely measure of economic developments and therefore are a useful tool for economic analysis and policy. The quarterly series also provide early estimates of annual GDP.

Kvartalno kretanje BDP-proizvodni pristup i Izdataka za krajnju potrošnju domaćinstava, domaći koncept

Quarterly trends of GDP-production approach and Household final consumption expenditure, domestic concept



Izvori i metode prikupljanja podataka

Kvartalne procjene BDP-a prema rashodnom pristupu su, najvećim dijelom, zasnovane na istim izvorima i metodama koje se koriste za procjene BDP-a na godišnjem nivou. Za one kategorije, gdje godišnji izvori podataka nisu raspoloživi na kvartalnom nivou, korišteni su rezultati raspoloživih mjesečnih i kvartalnih statističkih istraživanja, kao što su statistika poljoprivrede, prerađivačke industrije, građevinarstva, trgovina, hotela i restorana, transporta i komunikacija, zaposlenosti i zarada, statistika cijena, porezne evidencije kao i drugi izvori.

Važno je istaknuti da, zbog nepostojanja kvalitetnih izvora podataka za kvartalne procjene kretanja zaliha, koje mogu imati veliki uticaj na kvartalna kretanja BDP-a procijenjenog prema rashodnom pristupu, nije bilo moguće izvesti ni kvartalne procjene ukupnog BDP-a, koje bi bile konzistentne s godišnjim procjenama. Vrijednosti kvartalnih procjena zaliha prikazane su kao dio ukupne statističke diskrepancije, koja pored zaliha uključuje i diskrepanciju između postojećih procjena BDP-a procijenjenog prema proizvodnom i rashodnom pristupu.

Obuhvat

Izračunavanje obuhvata sve aktivnosti slijedeći rashodni koncept prema Sistemu nacionalnih računa 1993 (SNA 93) i Evropskom sistemu računa 1995 (ESA 95).

Predstavljanje podataka

Osnovni agregati i kategorije su u pogledu koncepta i terminologije, harmonizovani sa SNA 93 i ESA 95.

Definicije i pojašnjenja

Bruto domaći proizvod prema rashodnom pristupu definiše se kao ukupna domaća krajnja potrošnja korigovana vanjskim bilansom roba i usluga sa ostatkom svijeta. Osnovne komponente BDP-a po rashodnom pristupu:

- Izdaci za krajnju potrošnju domaćinstava,
- Izdaci za krajnju potrošnju neprofitnih institucija koje usluge pružaju domaćinstvima,
- Izdaci za krajnju potrošnju vlade,
- Bruto investicije,
- Izvoz i uvoz roba i usluga.

Izdaci za krajnju potrošnju domaćinstava sastoje se od izdataka rezidentnih domaćinstava na potrošnju robe i usluga za direktno zadovoljenje ljudskih potreba i želja.

Izdaci za krajnju potrošnju neprofitnih institucija koje usluge pružaju domaćinstvima se sastoje od roba i usluga koje neprofitne institucije pružaju domaćinstvima bez naknade ili u cijenama koje nisu ekonomski značajne.

Izdaci za krajnju potrošnju vlade obuhvataju dvije kategorije izdataka: Izdatke za individualnu potrošnju i Izdatke za kolektivnu potrošnju. **Izdaci za individualnu potrošnju vlade** sastoje se od isplata za netržišne usluge vlade (obrazovanje, zdravlje, socijalnu zaštitu, kulturu, sport itd.) i izdataka za tržišne proizvode i usluge (lijekove, ortopedska pomagala, usluge lječilišta itd.) direktno dostavljenih domaćinstvima kao socijalni transfer u naturi.

Izdaci za kolektivnu potrošnju vlade uglavnom se sastoje od izdataka za administrativne, odbrambene, ekonomske, razvojno-istraživačke i druge netržišne usluge vlade.

Source and methods of data collection

The quarterly estimates of GDP by expenditure, to a large extent, are based on the same sources and methods used in annual estimates. For those categories where the annual data sources are not available at the quarterly level, we have used the results of available monthly and quarterly statistical surveys, such as the statistics of agriculture, manufacturing, construction, trade, hotels and restaurants, transport and communications, employment and wages, price statistics, tax records and other sources.

It is important to point out that quality data sources for quarterly estimates on changes in inventories, which might have a huge impact on the quarterly movements of GDP by the expenditure approach estimates, have not been available. Therefore value of quarterly estimates on changes in inventories is shown as part of the overall statistical discrepancy, that in addition to changes in inventories includes existing discrepancy between GDP estimated by production and expenditure approach. That is why quarterly estimates of total GDP, which have to be consistent with the annual estimates, have not been possible to compile.

Coverage

The calculation covers all activities following the concept of expenditure by the 1993 System of National Accounts (SNA 93) and the 1995 European System of Accounts (ESA 95).

Data presentation

The main aggregates and categories are, as in regards of the concept and terminology, harmonised with SNA 93 and ESA 95.

Definitions and explanations

Gross domestic product (GDP) by expenditure approach is defined as total domestic final consumption corrected by external trade balance with the rest of the world. The main components of GDP by expenditure are:

- Household final consumption expenditure,
- Final consumption of non-profit institutions serving households,
- Final consumption of general government,
- Gross capital formation,
- Export and import of goods and services.

Household final consumption expenditure consists of expenditure incurred by resident households on consumption goods and services for the direct satisfaction of human needs and wants.

Final consumption expenditure of non-profit institutions serving households consists of goods and services which non-profit institutions provide to households free or at prices that are not economically significant.

Final consumption of general government includes two categories of expenditure: Individual government consumption expenditure and Collective government consumption expenditure. **Individual government consumption expenditure** comprises payment for non-market government services (education, health, social care, culture, sport, etc.) and market goods and services (pharmaceutical and therapeutic products, health resort services) supplied directly to households as social transfer in kind.

Collective government consumption expenditure consists of expenditure on administrative, defense, economic, R&D and other non market government services.

Bruto investicije se sastoje od bruto investicija u stalna sredstva, promjena na zalihama i neto sticanje dragocjenosti. Bruto investicije u stalna sredstva sastoje se od investicija u nova stalna sredstva, troškova transakcija za postojeća stalna sredstva i nabavke proizvedene aktive. Promjene zaliha odnose se na zalihe proizvodnje u toku, zalihe gotovih proizvoda, zalihe trgovačke robe i zalihe sirovina i materijala.

Podaci o izvozu i uvozu roba i usluga zasnivaju se na bilansu plaćanja Centralne banke Bosne i Hercegovine. Vrijednost izvezena robe obračunava se po paritetu fob, a vrijednost uvezene robe po paritetu cif.

Sezonsko podešavanje podataka

Sezonski podešene vrijednosti su vrijednosti u kojima je uklonjen uticaj sezone i kalendara. Zbir kvartalnih sezonski podešenih podataka u godini nije jednak zbiru podataka koji nisu vremenski podešeni.

Metodološka pojašnjenja

Osnovna karakteristika kvartalnih nacionalnih računa je da se primjenjuju isti principi, definicije i strukture kao i kod godišnjih računa.

Kvartalne procjene izdataka domaćinstava za finalnu potrošnju sastoje se od izdataka rezidentnih domaćinstava na finalnu potrošnju roba i usluga za zadovoljenje njihovih potreba. Kvartalne procjene na konačnu potrošnju industrijskih proizvoda zasnovane su na metodi robnih tokova, kao i kod godišnjih procjena, dok se procjene izdataka za finalnu potrošnju usluga uglavnom oslanjaju na indikatore, odnosno raspoloživa mjesečna i kvartalna istraživanja.

Kvartalne procjene izdataka vlade na finalnu potrošnju zasnovane su na relevantnim indikatorima preuzetim iz kvartalnog obračuna BDP-a prema proizvodnom pristupu.

Za procjenu bruto investicija u građevinske objekte, na kvartalnoj osnovi, korišteni su kvartalni indikatori promjena u građevinskoj djelatnosti, dok je za procjene ulaganja u mašine i opremu korištena metoda robnih tokova, kao i kod godišnjih procjena.

Za procjenu kretanja ukupnog uvoza i izvoza roba i usluga korišteni su podaci raspoloživi u statistici platnog bilansa, koji priprema i objavljuje Centralna banka Bosne i Hercegovine.

Važna osobina kvartalnih nacionalnih računa je njihova konzistentnost s godišnjim računima, što znači da je suma četiri kvartala, za bilo koju pojedinačnu godinu, jednaka odgovarajućoj godišnjoj procjeni. Ova jednakost se postiže primjenom posebne statističke procedure nazvane „benchmarking“. U kompilaciji kvartalnog BDP-a BiH, za „benchmark“ proceduru korišten je Denton metoda, čija osnovna karakteristika je da zadržava, koliko je to moguće, kretanje indikatora unutar godine, ali uz ograničenje, da zbir sačinjenih kvartalnih procjena treba biti identičan godišnjim podacima (benchmark podaci).

Gross capital formation is composed of gross fixed capital formation, changes in stocks and acquisition less disposals of valuables. Gross fixed capital formation consists of investments into new fixed capital formation, costs of transactions of existing fixed assets and additions to the value of non-produced assets. Changes in stocks refer to changes of work-in-progress, changes of finished goods, changes of goods in stores and of raw material.

Import and export of goods and services are based on the balance of payments data taken over from Central bank of Bosnia and Herzegovina. The export value of goods is calculated by fob, while import value of goods is calculated by cif.

Seasonally and working days adjusted data

The seasonally and working days adjusted values are the value from which the seasonality and the calendar effects have been removed. Sum of quarterly seasonally adjusted data in a year is not equal to the sum of non-seasonally adjusted data.

Methodological explanations

The quarterly national accounts adopt the same principles, definitions, and structure of the annual accounts.

The quarterly estimates of expenditures of households for final consumption consists of expenditure incurred by resident households on consumption of goods and services for the direct satisfaction on human needs. Quarterly estimates of the final consumption of manufactured products are based on the commodity flow method, as in the annual estimate. Quarterly estimates of expenditure for final consumption of services mostly rely on indicators, which are available in monthly and quarterly surveys.

Quarterly estimates of general government consumption expenditures are consistent with the respective estimates of output within the framework of quarterly GDP estimates by production.

Indicators on quarterly changes in the construction industry have been used for estimates of gross fixed capital formation, on a quarterly basis. For machinery and equipment used commodity flow method, as in the annual estimate

Data for the movement of the total imports and exports of goods and services estimates are obtained from the quarterly balance of payment estimates compiled by the Central bank of Bosnia and Herzegovina.

An important property of the quarterly national accounts is their consistency with the annual accounts, that is, the sum of the four quarters for any given year is equal to the corresponding annual estimate. This identity is obtained by mean of a statistical procedure called „benchmarking“. The Denton benchmarking method has been used in the compilation of the quarterly GDP of the BiH, thus preserving as much as possible the intra-annual movement of the indicators but subject to the restriction that the sum of the resulting quarterly estimates should be identical to the annual data (the benchmark).

Serije kvartalnih procjena BDP-a, u priloženim tabelama, prikazane su u tekućim cijenama, te u lančano povezanim vrijednostima u cijenama 2010. Da bi se dobila dugoročna serija, procjene mjera obima u cijenama prethodne godine su lančano povezane sa utvrđenim fiksnim referentnim periodom, čime se omogućava poređenje između bilo kojih odabranih perioda. Odabrani referentni period za BiH je 2010.

U priloženim tabelama su prikazane i kvartalne stope obima između tekućeg i prethodnog kvartala, te između tekućeg kvartala i istog kvartala prethodne godine. Važno je napomenuti da ove stope rasta predstavljaju različite dimenzije mjera rasta, prva predstavlja kvartalnu stopu rasta, dok druga predstavlja ustvari godišnju stopu rasta (mjere promjene između dva kvartala koji su udaljeni jednu godinu).

Tabele, uključuju i sezonski podešene serije u cijenama 2010. i kvartalne stope rasta u odnosu na prethodni kvartal. Sezonski podešene serije, iz originalnih podataka, uklanjaju kvartalne sezonske fluktuacije i uticaj kalendara (u obzir je uzet samo uticaj radnih dana).

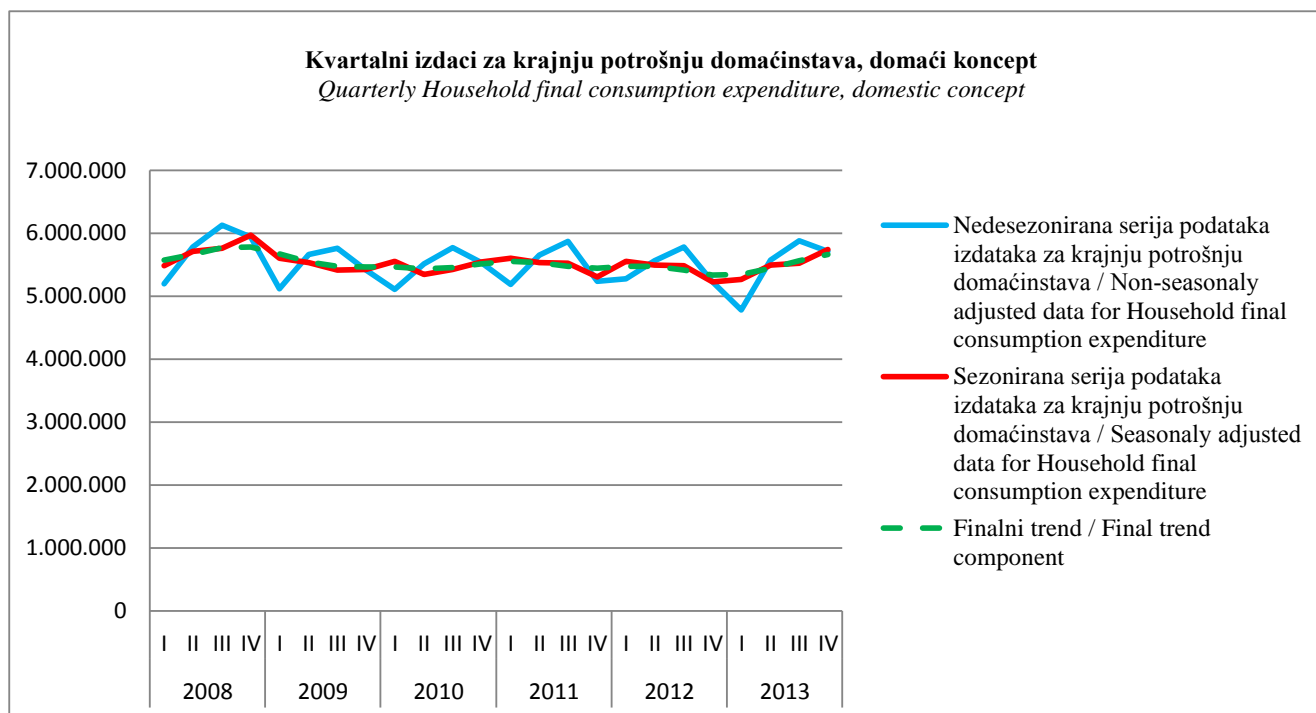
Serije su sezonski podešene korištenjem Demetra + softvera i TRAMO-SEATS metode. Korištena je direktna metoda (svaka serija je sezonski podešena, direktno).

Quarterly GDP data series are presented in the attached tables at current prices and as chain-linked values at prices of 2010. In order to obtain long-term series, estimates of volume measures at prices of previous year are chain-linked to produce series at a fixed reference period, thus allowing the comparison between any chosen different periods. The selected fixed reference period in BiH is 2010.

The attached tables also present quarterly volume growth rates from quarter to previous quarter and from quarter to the same quarter of previous year. It should be noted that these growth rates represent different dimensions of growth measures, as the first is a quarterly growth rate and the second is actually an annual growth rate (measure the changes between two quarters that are one year apart).

The tables include also seasonally adjusted data at prices of 2010 and the respective quarter to previous quarter growth rates. The seasonally adjusted series remove from the original data the quarterly seasonal fluctuations and the calendar effects (only the effect of working days has been considered).

The series have been seasonally adjusted by means of the Demetra + software using the TRAMO-SEATS method. The direct method was used (each series was seasonally adjusted, directly).



1. KVARTALNI BRUTO DOMAĆI PROIZVOD PREMA RASHODNOM PRISTUPU, TEKUĆE CIJENE

1. QUARTERLY GROSS DOMESTIC PRODUCT, BY EXPENDITURE APPROACH, AT CURRENT PRICES

Godina / Year	Izdaci za krajnju potrošnju domaćinstava / Household final consumption expenditure	Izdaci za krajnju potrošnju NPUSD / Final consumption expenditure of NIPISH	Izdaci za krajnju potrošnju vlade / General government final consumption expenditure		Bruto investicije u stalna sredstva / Gross fixed capital formation			Dragocjenosti / Valuables	
			Individualna potrošnja vlade / Individual government consumption	Kolektivna potrošnja vlade / Collective government consumption	Mašine i oprema / Machinery and equipment	Građevinski objekti / Construction	Ostale investicije / Other investment		
1	2	3	4		5			6	
2008	21.751.919	249.692	2.627.998	2.942.489	2.557.121	3.282.995	212.269	740	
2009	20.927.244	236.527	2.658.878	3.075.262	1.871.032	2.717.846	221.586	633	
2010	21.293.875	249.038	2.725.905	3.053.850	1.773.437	2.361.011	164.862	218	
2011	21.927.336	266.724	2.825.225	3.149.828	2.027.971	2.608.486	163.860	469	
2012	22.337.502	279.525	2.880.560	3.135.285	1.904.406	2.508.881	370.085	660	
2013	22.515.496	255.923	2.857.840	3.128.119	1.891.930	2.553.487	257.442	646	
2008	q1	4.853.544	56.004	627.502	690.893	607.253	712.887	44.707	160
	q2	5.425.609	62.488	661.866	735.646	732.263	826.697	56.563	200
	q3	5.806.344	66.606	664.888	754.621	603.155	881.522	51.426	178
	q4	5.666.421	64.594	673.743	761.330	614.450	861.889	59.572	201
2009	q1	4.937.944	55.810	685.330	785.811	507.974	632.431	57.124	188
	q2	5.363.758	60.405	666.025	778.378	467.716	712.523	56.515	174
	q3	5.459.416	61.595	646.376	753.075	406.450	713.363	49.821	137
	q4	5.166.126	58.716	661.146	757.998	488.892	659.530	58.126	134
2010	q1	5.006.517	57.614	670.567	753.453	353.005	473.481	38.626	64
	q2	5.281.758	61.471	694.933	773.242	465.132	581.773	46.434	57
	q3	5.618.065	66.049	672.597	756.008	494.488	640.141	44.197	48
	q4	5.387.535	63.905	687.808	771.147	460.811	665.616	35.605	49
2011	q1	5.224.044	62.449	701.536	787.811	448.937	522.854	28.071	70
	q2	5.616.363	67.811	713.770	791.560	473.645	674.205	29.247	97
	q3	5.801.776	70.915	700.493	786.285	529.976	709.888	41.323	134
	q4	5.285.154	65.549	709.426	784.172	575.412	701.540	65.219	168
2012	q1	5.445.731	68.668	719.080	782.158	407.493	504.851	67.883	132
	q2	5.648.238	71.485	725.066	783.710	502.381	633.318	99.961	173
	q3	5.841.722	73.233	709.473	783.456	482.513	689.016	100.741	172
	q4	5.401.812	66.140	726.941	785.962	512.019	681.695	101.499	183
2013	q1	5.013.234	59.119	715.250	785.959	431.318	524.018	71.716	151
	q2	5.756.120	65.860	715.929	780.530	483.944	643.719	68.462	166
	q3	5.901.253	66.131	706.876	778.625	455.717	693.765	56.880	154
	q4	5.844.888	64.814	719.785	783.005	520.950	691.986	60.384	175

hiljada KM
thousand KM

Izvoz roba i usluga / Export of goods and services		Uvoz roba i usluga (minus) / Import of goods and services		Bruto domaći proizvod (rashodni pristup) / Gross domestic product by expenditure approach ¹⁾	Bruto domaći proizvod (proizvodni pristup) / Gross domestic product by production approach	Godina / Year
Robe (fob) / Goods	Usluge / Services	Robe (fob) / Goods	Usluge / Services			
7		8		9	10	13
3.397.400	3.159.800	14.062.300	774.800	25.345.323	24.984.094	2008
3.213.400	2.790.800	10.999.700	888.100	25.825.408	24.307.242	2009
4.281.400	2.956.100	11.910.500	796.800	26.152.395	24.878.693	2010
5.134.300	2.889.700	13.480.500	773.600	26.739.800	25.772.212	2011
5.035.800	2.908.800	13.480.900	721.400	27.159.204	25.734.322	2012
5.474.000	2.931.700	13.275.800	677.000	27.913.783	26.282.232	2013
737.087	696.200	3.093.626	136.116	5.796.495	5.381.473	q1
900.106	806.127	3.652.558	170.080	6.384.927	6.399.887	q2
947.112	967.879	3.834.536	356.858	6.552.336	6.982.112	q3
813.096	689.594	3.481.579	111.745	6.611.565	6.220.622	q4
676.874	631.293	2.516.160	140.437	6.314.181	5.472.401	q1
779.854	671.164	2.808.179	218.849	6.529.484	6.319.586	q2
879.836	848.260	2.831.180	361.193	6.625.956	6.636.569	q3
876.836	640.083	2.844.181	167.620	6.355.787	5.878.685	q4
905.821	598.199	2.389.900	127.089	6.340.359	5.551.735	q1
1.117.226	723.707	3.002.874	170.345	6.572.514	6.319.197	q2
1.132.826	868.382	3.260.863	339.334	6.692.603	6.864.820	q3
1.125.526	765.812	3.256.863	160.031	6.546.919	6.142.941	q4
1.206.822	625.246	2.922.642	131.311	6.553.888	5.799.494	q1
1.309.025	674.687	3.404.749	172.979	6.772.681	6.632.466	q2
1.317.926	864.701	3.537.552	311.487	6.974.377	7.041.633	q3
1.300.527	725.066	3.615.556	157.823	6.438.854	6.298.619	q4
1.085.204	604.500	2.997.449	118.802	6.569.450	5.711.409	q1
1.359.504	734.202	3.422.255	173.950	6.961.833	6.592.777	q2
1.303.500	909.174	3.661.054	280.241	6.951.702	7.076.697	q3
1.287.592	660.924	3.400.142	148.406	6.676.219	6.353.440	q4
1.212.044	619.820	2.988.214	120.027	6.324.388	5.825.534	q1
1.492.804	768.317	3.297.945	163.670	7.314.235	6.791.624	q2
1.381.758	883.334	3.434.588	254.015	7.235.890	7.157.392	q3
1.387.395	660.229	3.555.054	139.288	7.039.270	6.507.682	q4

1) Zalihe nisu uključene / Changes in inventories are not included

2. KVARTALNI IZDACI ZA KRAJNJU POTROŠNJU DOMAĆINSTAVA, TEKUĆE CIJENE
2. QUARTERLY HOUSEHOLD FINAL CONSUMPTION EXPENDITURE, AT CURRENT PRICES

Godina / Year		01 Hrana i bezalkoholna pića / Food and non-alcoholic bev.	02 Alkoholna pića, duhan i narkotici / Alcoholic beverages; tobacco and narcotics	03 Odjeća i obuća / Clothing and footwear	04 Stanovanje, voda, el. en; plin i ostala goriva / Housing, water, electricity, gas and other fuels	05 Pokućstvo i rutinsko održavanje stana / Furnishing, household equip. and routine household maint.	06 Zdravstvo / Health	07 Transport / Transport
1	2	3	4	5	6	7	8	
2008	7.610.619	1.113.583	1.100.740	2.921.222	1.623.165	982.765	1.972.467	
2009	7.225.059	1.222.746	955.493	3.050.588	1.326.598	992.392	1.831.202	
2010	7.010.371	1.471.030	946.134	3.110.597	1.331.494	953.656	1.985.500	
2011	7.224.349	1.594.029	988.698	3.168.426	1.306.602	858.111	2.117.803	
2012	7.447.126	1.756.985	955.273	3.234.813	1.328.796	891.908	2.118.107	
2013	7.493.524	1.878.753	990.055	3.264.504	1.327.098	880.426	2.109.050	
2008	q1	1.666.143	276.303	224.828	655.003	343.657	249.920	412.782
	q2	1.951.687	277.658	278.741	709.478	429.575	243.454	509.700
	q3	2.001.110	279.572	296.831	775.957	430.871	235.866	535.060
	q4	1.991.678	280.051	300.341	780.784	419.062	253.525	514.925
2009	q1	1.666.070	281.158	217.771	698.934	342.390	251.945	398.104
	q2	1.961.176	282.352	248.536	757.553	338.173	247.087	482.022
	q3	1.842.846	330.005	241.678	834.958	331.674	238.916	469.654
	q4	1.754.967	329.231	247.508	759.144	314.361	254.445	481.422
2010	q1	1.672.302	367.712	213.876	705.424	262.646	251.561	422.732
	q2	1.798.802	367.746	231.670	775.420	294.834	245.004	497.388
	q3	1.845.223	367.929	242.537	850.843	361.730	232.024	523.613
	q4	1.694.043	367.642	258.051	778.909	412.283	225.067	541.766
2011	q1	1.688.894	396.164	212.947	740.671	307.363	223.720	464.304
	q2	1.858.280	398.407	256.941	804.258	342.586	212.669	561.824
	q3	1.900.768	399.759	247.635	852.905	375.952	207.110	555.833
	q4	1.776.408	399.699	271.174	770.592	280.700	214.612	535.842
2012	q1	1.838.607	436.841	213.689	735.899	394.575	220.032	460.923
	q2	1.914.954	438.123	223.297	811.075	340.611	224.697	588.528
	q3	1.956.332	440.096	240.376	882.581	307.715	220.688	541.426
	q4	1.737.232	441.925	277.912	805.257	285.895	226.492	527.230
2013	q1	1.575.901	466.615	196.161	728.756	242.545	226.503	458.681
	q2	2.043.240	469.018	237.748	819.992	314.190	220.777	562.316
	q3	2.002.475	471.342	254.237	889.211	379.212	216.203	529.368
	q4	1.871.908	471.778	301.909	826.544	391.151	216.943	558.685

1) Nacionalni koncept uključuje neto kupovine u inostranstvu / National concept includes net purchases abroad

hiljada KM
thousand KM

08 Komunikacije / Communication	09 Rekreacija i kultura / Recreation and culture	10 Obrazovanje / Education	11 Restorani i hoteli / Restaurants and hotels	12 Ostala dobra i usluge / Miscellaneous goods and services	Neto kupovine u inostranstvu ¹⁾ (minus) / Net purchases abroad	Izdaci za krajnju potrošnju domaćinstava - nacionalni koncept / Household final consumption expenditure - national concept	Godina / Year
9	10	11	12	13	14	15	16
637.244	1.143.484	293.612	1.458.471	1.639.747	745.200	21.751.919	2008
640.086	1.008.074	300.348	1.410.693	1.637.265	673.300	20.927.244	2009
646.142	988.088	303.337	1.510.622	1.668.106	631.200	21.293.875	2010
699.341	1.040.592	318.868	1.569.543	1.718.974	678.000	21.927.336	2011
709.345	1.017.552	321.591	1.589.855	1.726.251	760.100	22.337.502	2012
704.054	1.043.460	318.404	1.583.071	1.775.458	852.361	22.515.496	2013
158.927	267.830	73.486	304.872	377.435	157.642	4.853.544	q1
159.143	271.643	73.669	395.554	381.154	255.846	5.425.609	q2
160.146	305.836	72.355	438.835	421.672	147.767	5.806.344	q3
159.028	298.175	74.102	319.210	459.486	183.945	5.666.421	q4
161.068	244.227	75.953	300.069	443.403	143.149	4.937.944	q1
163.183	231.436	75.899	380.633	418.297	222.588	5.363.758	q2
159.379	275.275	73.328	416.867	387.125	142.288	5.459.416	q3
156.457	257.135	75.169	313.123	388.441	165.275	5.166.126	q4
162.777	229.420	76.305	290.859	473.404	122.503	5.006.517	q1
162.657	224.242	76.174	404.441	410.119	206.740	5.281.758	q2
160.597	266.454	73.735	481.008	365.060	152.690	5.618.065	q3
160.110	267.971	77.123	334.313	419.523	149.267	5.387.535	q4
174.050	247.566	79.401	296.921	505.799	113.755	5.224.044	q1
173.912	232.439	80.158	413.604	474.254	192.970	5.616.363	q2
175.830	277.069	78.235	515.370	418.696	203.386	5.801.776	q3
175.550	283.518	81.075	343.647	320.225	167.889	5.285.154	q4
178.997	250.047	81.472	310.421	441.606	117.378	5.445.731	q1
177.220	236.025	80.989	425.875	401.500	214.658	5.648.238	q2
176.795	264.774	78.108	527.337	463.892	258.398	5.841.722	q3
176.334	266.706	81.021	326.223	419.253	169.666	5.401.812	q4
176.993	253.939	80.729	297.875	437.107	128.571	5.013.234	q1
176.106	238.166	80.026	430.695	402.290	238.443	5.756.120	q2
174.985	279.366	77.232	522.767	409.177	304.324	5.901.253	q3
175.970	271.989	80.417	331.733	526.884	181.024	5.844.888	q4

**3. KVARTALNI IZDACI ZA KRAJNJU POTROŠNJU DOMAĆINSTAVA, LANČANO
POVEZANE VRIJEDNOSTI U CIJENAMA 2010.**

3. QUARTERLY HOUSEHOLD FINAL CONSUMPTION EXPENDITURE, CHAIN LINKED AT PRICES 2010

Godina / Year	01 Hrana i bezalkoholna pića / Food and non-alcoholic bev.	02 Alkoholna pića, duhan i narkotici / Alcoholic beverages; tobacco and narcotics	03 Odjeća i obuća / Clothing and footwear	04 Stanovanje, voda, el. en; plin i ostala goriva / Housing, water, electricity, gas and other fuels	05 Pokućstvo i rutinsko održavanje stana / Furnishing, household equip. and routine household maint.	06 Zdravstvo / Health	07 Transport / Transport	
								1
2008	7.524.439	1.463.566	1.013.842	3.116.417	1.637.948	1.006.966	1.937.816	
2009	7.184.810	1.471.768	913.846	3.108.511	1.326.207	1.008.650	1.904.854	
2010	7.010.371	1.471.030	946.134	3.110.597	1.331.494	953.656	1.985.500	
2011	6.943.967	1.468.258	968.281	3.106.114	1.298.096	870.678	2.034.101	
2012	7.000.068	1.466.187	915.777	3.097.353	1.312.112	894.992	1.953.328	
2013	7.000.853	1.475.284	1.040.167	3.025.313	1.312.401	896.150	1.946.932	
2008	q1	1.672.800	365.294	204.385	697.184	350.846	256.597	420.386
	q2	1.852.264	365.556	255.685	790.731	436.592	249.515	498.477
	q3	2.026.239	366.137	273.977	841.928	432.705	241.578	506.847
	q4	1.973.136	366.579	279.795	786.575	417.805	259.276	512.106
2009	q1	1.601.135	367.243	203.780	698.389	341.109	257.472	424.756
	q2	1.872.690	367.933	236.692	795.337	337.421	252.062	517.072
	q3	1.918.794	368.359	231.927	864.558	332.072	242.897	477.230
	q4	1.792.190	368.233	241.447	750.227	315.605	256.219	485.796
2010	q1	1.673.325	367.946	209.394	688.083	262.801	247.496	429.330
	q2	1.804.899	367.808	231.938	794.622	295.329	244.166	497.754
	q3	1.820.278	367.749	243.927	871.028	361.894	233.915	522.182
	q4	1.711.869	367.528	260.875	756.864	411.470	228.079	536.234
2011	q1	1.622.942	367.294	209.708	712.304	306.533	227.479	454.498
	q2	1.756.027	367.225	253.804	817.937	341.225	216.302	543.267
	q3	1.868.528	367.103	241.969	841.226	373.223	209.910	530.995
	q4	1.696.471	366.636	262.800	734.648	277.114	216.988	505.341
2012	q1	1.743.364	366.070	203.838	695.021	390.710	221.359	428.301
	q2	1.797.370	366.060	214.395	795.839	336.796	225.155	541.894
	q3	1.832.814	366.633	229.774	864.309	302.933	221.296	498.002
	q4	1.626.520	367.423	267.770	742.185	281.674	227.182	485.130
2013	q1	1.441.710	367.622	204.304	666.614	240.917	229.770	422.971
	q2	1.839.083	368.608	245.466	774.667	310.499	224.737	519.103
	q3	1.905.473	369.400	274.230	833.287	374.067	220.128	488.110
	q4	1.814.588	369.654	316.167	750.745	386.918	221.515	516.749

1) Nacionalni koncept uključuje neto kupovine u inostranstvu / National concept includes net purchases abroad

hiljada KM

thousand KM

08 Komunikacije <i>/Communication</i>	09 Rekreacija i kultura / <i>Recreation and culture</i>	10 Obrazovanje / <i>Education</i>	11 Restorani i hoteli / <i>Restaurants and hotels</i>	12 Ostala dobra i usluge / <i>Miscellaneous goods and services</i>	Neto kupovine u inostranstvu ¹⁾ <i>(minus) / Net purchases abroad</i>	Izdaci za krajnju potrošnju domaćinstava - nacionalni koncept / <i>Household final consumption expenditure - national concept</i>	Godina / Year
9	10	11	12	13	14	15	16
653.651	1.163.434	301.945	1.545.713	1.653.899	755.054	21.932.857	2008
645.728	1.008.823	307.065	1.427.911	1.650.184	687.863	20.927.244	2009
646.142	988.088	303.337	1.510.622	1.668.106	631.200	21.293.875	2010
662.691	1.036.686	318.760	1.540.632	1.703.445	668.665	21.283.044	2011
661.331	1.010.257	321.610	1.535.446	1.687.018	735.340	21.120.918	2012
654.628	1.027.482	314.548	1.524.842	1.730.480	828.737	21.121.689	2013
164.438	275.017	75.489	331.626	386.181	-160.252	5.039.424	q1
164.528	277.084	75.700	424.073	386.074	-257.815	5.523.157	q2
164.482	308.805	74.370	460.778	422.191	-155.377	5.974.140	q3
160.203	302.529	76.386	329.235	459.453	-181.610	5.759.622	q4
160.711	244.252	77.860	305.103	445.079	-144.493	4.976.980	q1
163.350	230.541	77.595	386.318	422.495	-228.577	5.435.090	q2
160.989	275.274	74.902	422.658	391.319	-149.136	5.612.110	q3
160.678	258.756	76.707	313.832	391.291	-165.658	5.249.884	q4
160.081	228.833	76.162	291.276	473.567	-121.441	4.983.541	q1
162.408	224.494	76.147	404.843	410.653	-206.723	5.308.454	q2
161.907	266.400	73.808	481.945	365.029	-153.969	5.618.053	q3
161.745	268.360	77.220	332.557	418.857	-149.067	5.383.827	q4
166.020	246.955	79.453	294.415	501.207	-111.334	5.077.472	q1
164.654	231.128	80.163	408.164	471.074	-190.289	5.460.681	q2
166.233	275.824	78.190	505.024	416.069	-201.898	5.672.396	q3
165.784	282.779	80.953	333.030	315.095	-165.144	5.072.494	q4
166.717	249.054	81.511	300.015	433.490	-113.188	5.165.071	q1
165.140	234.502	81.367	411.625	392.309	-207.834	5.356.575	q2
164.898	262.806	78.360	509.374	454.222	-251.199	5.533.903	q3
164.577	263.895	80.372	314.432	406.997	-163.119	5.065.368	q4
164.676	250.544	79.868	287.213	424.808	-123.190	4.660.389	q1
163.788	233.881	79.130	414.857	391.970	-230.169	5.340.155	q2
162.620	275.798	76.296	503.363	400.092	-298.888	5.582.245	q3
163.544	267.259	79.254	319.409	513.610	-176.491	5.538.899	q4

4. KVARTALNI IZDACI ZA KRAJNJU POTROŠNJU DOMAĆINSTAVA, LANČANO POVEZANE VRIJEDNOSTI U CIJENAMA 2010. (Stope realnog rasta Q/Q-4)

4. QUARTERLY HOUSEHOLD FINAL CONSUMPTION EXPENDITURE, CHAIN LINKED AT PRICES 2010 (Real growth rate Q/Q-4)

Godina / Year	01 Hrana i bezalkoholna pića / Food and non-alcoholic bev.	02 Alkoholna pića, duhan i narkotici / Alcoholic beverages; tobacco and narcotics	03 Odjeća i obuća / Clothing and footwear	04 Stanovanje, voda, el. en.; plin i ostala goriva / Housing, water, electricity, gas and other fuels	05 Pokućstvo i rutinsko održavanje stana / Furnishing, household equip. and routine household maint.	06 Zdravstvo / Health	07 Transport / Transport	
1	2	3	4	5	6	7	8	
2009	-4,51	0,56	-9,86	-0,25	-19,03	0,17	-1,70	
2010	-2,43	-0,05	3,53	0,07	0,40	-5,45	4,23	
2011	-0,95	-0,19	2,34	-0,14	-2,51	-8,70	2,45	
2012	0,81	-0,14	-5,42	-0,28	1,08	2,79	-3,97	
2013	0,01	0,62	13,58	-2,33	0,02	0,13	-0,33	
2009	q1	-4,28	0,53	-0,30	0,17	-2,78	0,34	1,04
	q2	1,10	0,65	-7,43	0,58	-22,71	1,02	3,73
	q3	-5,30	0,61	-15,35	2,69	-23,26	0,55	-5,84
	q4	-9,17	0,45	-13,71	-4,62	-24,46	-1,18	-5,14
2010	q1	4,51	0,19	2,75	-1,48	-22,96	-3,87	1,08
	q2	-3,62	-0,03	-2,01	-0,09	-12,47	-3,13	-3,74
	q3	-5,13	-0,17	5,17	0,75	8,98	-3,70	9,42
	q4	-4,48	-0,19	8,05	0,88	30,37	-10,98	10,38
2011	q1	-3,01	-0,18	0,15	3,52	16,64	-8,09	5,86
	q2	-2,71	-0,16	9,43	2,93	15,54	-11,41	9,14
	q3	2,65	-0,18	-0,80	-3,42	3,13	-10,26	1,69
	q4	-0,90	-0,24	0,74	-2,94	-32,65	-4,86	-5,76
2012	q1	7,42	-0,33	-2,80	-2,43	27,46	-2,69	-5,76
	q2	2,35	-0,32	-15,53	-2,70	-1,30	4,09	-0,25
	q3	-1,91	-0,13	-5,04	2,74	-18,83	5,42	-6,21
	q4	-4,12	0,21	1,89	1,03	1,65	4,70	-4,00
2013	q1	-17,30	0,42	0,23	-4,09	-38,34	3,80	-1,24
	q2	2,32	0,70	14,49	-2,66	-7,81	-0,19	-4,21
	q3	3,96	0,75	19,35	-3,59	23,48	-0,53	-1,99
	q4	11,56	0,61	18,07	1,15	37,36	-2,49	6,52

1) Nacionalni koncept uključuje neto kupovine u inostranstvu / National concept includes net purchases abroad

08 Komunikacije <i>/Communication</i>	09 Rekreacija i kultura / <i>Recreation and culture</i>	10 Obrazovanje / <i>Education</i>	11 Restorani i hoteli / <i>Restaurants and hotels</i>	12 Ostala dobra i usluge / <i>Miscellaneous goods and services</i>	Neto kupovine u inostranstvu ¹⁾ (minus) / <i>Net purchases abroad</i>	Izdaci za krajnju potrošnju domaćinstava - nacionalni koncept <i>/ Household final consumption expenditure - national concept</i>	Godina / Year
9	10	11	12	13	14	15	16
-1,21	-13,29	1,70	-7,62	-0,22	-8,90	-4,58	2009
0,06	-2,06	-1,21	5,79	1,09	-8,24	0,09	2010
2,56	4,92	5,08	1,99	2,12	5,94	-0,05	2011
-0,21	-2,55	0,89	-0,34	-0,96	9,97	-0,76	2012
-1,01	1,70	-2,20	-0,69	2,58	12,70	0,00	2013
-2,27	-11,19	3,14	-8,00	15,25	-9,83	-1,24	q1
-0,72	-16,80	2,50	-8,90	9,43	-11,34	-1,59	q2
-2,12	-10,86	0,72	-8,27	-7,31	-4,02	-6,06	q3
0,30	-14,47	0,42	-4,68	-14,84	-8,78	-8,85	q4
-0,39	-6,31	-2,18	-4,53	6,40	-15,95	0,13	q1
-0,58	-2,62	-1,87	4,80	-2,80	-9,56	-2,33	q2
0,57	-3,22	-1,46	14,03	-6,72	3,24	0,11	q3
0,66	3,71	0,67	5,97	7,04	-10,01	2,55	q4
3,71	7,92	4,32	1,08	5,84	-8,32	1,88	q1
1,38	2,96	5,27	0,82	14,71	-7,95	2,87	q2
2,67	3,54	5,94	4,79	13,98	31,13	0,97	q3
2,50	5,37	4,83	0,14	-24,77	10,79	-5,78	q4
0,42	0,85	2,59	1,90	-13,51	1,66	1,73	q1
0,30	1,46	1,50	0,85	-16,72	9,22	-1,91	q2
-0,80	-4,72	0,22	0,86	9,17	24,42	-2,44	q3
-0,73	-6,68	-0,72	-5,58	29,17	-1,23	-0,14	q4
-1,22	0,60	-2,02	-4,27	-2,00	8,84	-9,77	q1
-0,82	-0,26	-2,75	0,78	-0,09	10,75	-0,31	q2
-1,38	4,94	-2,63	-1,18	-11,92	18,98	0,87	q3
-0,63	1,27	-1,39	1,58	26,20	8,20	9,35	q4

5. KVARTALNI IZDACI ZA KRAJNJU POTROŠNJU DOMAĆINSTAVA, LANČANO POVEZANE VRIJEDNOSTI U CIJENAMA 2010. (Stope realnog rasta Q/Q-1)

5. QUARTERLY HOUSEHOLD FINAL CONSUMPTION EXPENDITURE, CHAIN LINKED AT PRICES 2010
(Real growth rate Q/Q-1)

Godina / Year		01 Hrana i bezalkoholna pića / Food and non-alcoholic bev.	02 Alkoholna pića, duhan i narkotici / Alcoholic beverages; tobacco and narcotics	03 Odjeća i obuća / Clothing and footwear	04 Stanovanje, voda, el. en.; plin i ostala goriva / Housing, water, electricity, gas and other fuels	05 Pokućstvo i rutinsko održavanje stana / Furnishing, household equip. and routine household maint.	06 Zdravstvo / Health	07 Transport / Transport
1		2	3	4	5	6	7	8
2008	q1							
	q2	10,73	0,07	25,10	13,42	24,44	-2,76	18,58
	q3	9,39	0,16	7,15	6,47	-0,89	-3,18	1,68
	q4	-2,62	0,12	2,12	-6,57	-3,44	7,33	1,04
2009	q1	-18,85	0,18	-27,17	-11,21	-18,36	-0,70	-17,06
	q2	16,96	0,19	16,15	13,88	-1,08	-2,10	21,73
	q3	2,46	0,12	-2,01	8,70	-1,59	-3,64	-7,71
	q4	-6,60	-0,03	4,10	-13,22	-4,96	5,48	1,80
2010	q1	-6,63	-0,08	-13,28	-8,28	-16,73	-3,40	-11,62
	q2	7,86	-0,04	10,77	15,48	12,38	-1,35	15,94
	q3	0,85	-0,02	5,17	9,62	22,54	-4,20	4,91
	q4	-5,96	-0,06	6,95	-13,11	13,70	-2,49	2,69
2011	q1	-5,19	-0,06	-19,61	-5,89	-25,50	-0,26	-15,24
	q2	8,20	-0,02	21,03	14,83	11,32	-4,91	19,53
	q3	6,41	-0,03	-4,66	2,85	9,38	-2,95	-2,26
	q4	-9,21	-0,13	8,61	-12,67	-25,75	3,37	-4,83
2012	q1	2,76	-0,15	-22,44	-5,39	40,99	2,01	-15,25
	q2	3,10	0,00	5,18	14,51	-13,80	1,71	26,52
	q3	1,97	0,16	7,17	8,60	-10,05	-1,71	-8,10
	q4	-11,26	0,22	16,54	-14,13	-7,02	2,66	-2,58
2013	q1	-11,36	0,05	-23,70	-10,18	-14,47	1,14	-12,81
	q2	27,56	0,27	20,15	16,21	28,88	-2,19	22,73
	q3	3,61	0,21	11,72	7,57	20,47	-2,05	-5,97
	q4	-4,77	0,07	15,29	-9,91	3,44	0,63	5,87

1) Nacionalni koncept uključuje neto kupovine u inostranstvu / National concept includes net purchases abroad

08 Komunikacije <i>Communication</i>	09 Rekreacija i kultura / <i>Recreation and culture</i>	10 Obrazovanje / <i>Education</i>	11 Restorani i hoteli / <i>Restaurants and hotels</i>	12 Ostala dobra i usluge / <i>Miscellaneous goods and services</i>	Neto kupovine u inostranstvu ¹⁾ <i>(minus) / Net purchases abroad</i>	Izdaci za krajnju potrošnju domaćinstava - nacionalni koncept / <i>Household final consumption expenditure - national concept</i>	Godina / Year
9	10	11	12	13	14	15	16
0,06	0,75	0,28	27,88	-0,03	60,88	9,60	q1
-0,03	11,45	-1,76	8,66	9,35	-39,73	8,17	q2
-2,60	-2,03	2,71	-28,55	8,83	16,88	-3,59	q3
							q4
0,32	-19,26	1,93	-7,33	-3,13	-20,44	-13,59	q1
1,64	-5,61	-0,34	26,62	-5,07	58,19	9,20	q2
-1,45	19,40	-3,47	9,41	-7,38	-34,75	3,26	q3
-0,19	-6,00	2,41	-25,75	-0,01	11,08	-6,45	q4
-0,37	-11,56	-0,71	-7,19	21,03	-26,69	-5,07	q1
1,45	-1,90	-0,02	38,99	-13,29	70,23	6,52	q2
-0,31	18,67	-3,07	19,05	-11,11	-25,52	5,83	q3
-0,10	0,74	4,62	-31,00	14,75	-3,18	-4,17	q4
2,64	-7,98	2,89	-11,47	19,66	-25,31	-5,69	q1
-0,82	-6,41	0,89	38,64	-6,01	70,92	7,55	q2
0,96	19,34	-2,46	23,73	-11,68	6,10	3,88	q3
-0,27	2,52	3,53	-34,06	-24,27	-18,20	-10,58	q4
0,56	-11,93	0,69	-9,91	37,57	-31,46	1,83	q1
-0,95	-5,84	-0,18	37,20	-9,50	83,62	3,71	q2
-0,15	12,07	-3,70	23,75	15,78	20,87	3,31	q3
-0,19	0,41	2,57	-38,27	-10,40	-35,06	-8,47	q4
0,06	-5,06	-0,63	-8,66	4,38	-24,48	-8,00	q1
-0,54	-6,65	-0,92	44,44	-7,73	86,84	14,59	q2
-0,71	17,92	-3,58	21,33	2,07	29,86	4,53	q3
0,57	-3,10	3,88	-36,55	28,37	-40,95	-0,78	q4

6. KVARTALNI IZDACI ZA KRAJNJU POTROŠNJU DOMAĆINSTAVA, DOMAĆI KONCEPT ¹⁾, SEZONSKI PODEŠENE LANČANO POVEZANE VRIJEDNOSTI U CIJENAMA 2010.

6. QUARTERLY HOUSEHOLD FINAL CONSUMPTION EXPENDITURE, DOMESTIC CONCEPT ¹⁾, SEASONALY ADJUSTED DATA, CHAIN LINKED AT PRICES 2010

Godina / Year		01 Hrana i bezalkoholna pića / Food and non-alcoholic bev.	02 Alkoholna pića, duhan i narkotici / Alcoholic beverages; tobacco and narcotics	03 Odjeća i obuća / Clothing and footwear	04 Stanovanje, voda, el. en.; plin i ostala goriva / Housing, water, electricity, gas and other fuels	05 Pokućstvo i rutinsko održavanje stana / Furnishing, household equip. and routine household maint.	06 Zdravstvo / Health	07 Transport / Transport
1		2	3	4	5	6	7	8
2008	q1	1.754.582	365.408	241.877	777.809	350.846	254.968	482.948
	q2	1.815.894	365.664	259.206	775.038	436.592	251.042	468.179
	q3	1.867.947	366.054	264.321	762.589	432.705	248.711	494.048
	q4	1.897.381	366.601	252.567	804.714	417.805	254.681	496.125
2009	q1	1.853.073	367.327	236.644	783.955	341.109	253.429	479.848
	q2	1.848.888	367.897	234.501	771.118	337.421	251.978	489.297
	q3	1.823.750	368.202	224.124	782.566	332.072	249.408	465.180
	q4	1.798.298	368.181	216.500	766.277	315.605	252.194	471.530
2010	q1	1.817.065	368.032	239.698	768.255	262.801	243.247	486.856
	q2	1.782.677	367.736	225.943	763.872	295.329	242.770	473.663
	q3	1.749.532	367.602	236.106	788.106	361.894	239.359	508.997
	q4	1.750.911	367.453	233.487	773.785	411.470	225.440	520.488
2011	q1	1.759.842	367.335	235.575	788.966	306.533	222.714	518.295
	q2	1.731.476	367.246	253.696	794.060	341.225	215.966	513.106
	q3	1.750.053	366.926	234.543	761.129	373.223	214.464	517.589
	q4	1.736.284	366.618	240.270	759.604	277.114	216.340	486.840
2012	q1	1.722.067	366.329	238.546	773.556	390.710	219.926	492.976
	q2	1.711.894	366.208	218.700	778.590	336.796	225.352	508.943
	q3	1.691.182	366.567	226.965	787.958	302.933	226.571	482.717
	q4	1.673.527	367.270	237.117	757.400	281.674	225.520	471.684
2013	q1	1.672.467	367.907	239.322	752.779	240.917	226.892	476.063
	q2	1.724.033	368.684	250.723	757.897	310.499	224.888	487.536
	q3	1.773.545	369.202	266.075	753.754	374.067	224.287	475.791
	q4	1.847.127	369.567	282.870	769.797	386.918	220.628	500.627

1) Domaći koncept ne uključuje neto kupovine u inostranstvu / Domestic concept does not include net purchases abroad

hiljada KM
thousand KM

08 Komunikacije <i>/Communication</i>	09 Rekreacija i kultura <i>/ Recreation and culture</i>	10 Obrazovanje <i>/ Education</i>	11 Restorani i hoteli <i>/ Restaurants and hotels</i>	12 Ostala dobra i usluge <i>/ Miscellaneous goods and services</i>	Izdaci za krajnju potrošnju domaćinstava - domaći koncept <i>/ Household final consumption expenditure - domestic concept</i>	Godina / Year	
9	10	11	12	13		14	
164.438	306.443	74.918	397.249	386.181	5.485.043	q1	2008
164.528	300.386	75.221	391.473	386.074	5.708.512	q2	
164.482	284.416	76.199	385.183	422.191	5.763.343	q3	
160.203	279.434	75.990	374.980	459.453	5.967.715	q4	
160.711	262.209	76.973	370.303	445.079	5.604.462	q1	2009
163.350	252.171	76.865	360.774	422.495	5.531.368	q2	
160.989	253.161	76.744	355.089	391.319	5.417.969	q3	
160.678	241.168	76.250	363.148	391.291	5.425.749	q4	
160.081	242.141	75.176	365.639	473.567	5.555.996	q1	2010
162.408	246.958	75.255	377.018	410.653	5.342.386	q2	
161.907	247.141	75.624	382.007	365.029	5.428.427	q3	
161.745	250.850	76.759	384.606	418.857	5.544.250	q4	
166.020	256.289	78.243	385.892	501.207	5.601.624	q1	2011
164.654	254.879	79.471	384.239	471.074	5.532.989	q2	
166.233	259.894	80.113	387.115	416.069	5.524.261	q3	
165.784	264.381	80.720	385.383	315.095	5.305.760	q4	
166.717	261.711	80.831	384.322	433.490	5.552.817	q1	2012
165.140	257.323	80.851	380.795	392.309	5.491.234	q2	
164.898	248.826	80.474	380.890	454.222	5.482.925	q3	
164.577	250.665	79.836	376.232	406.997	5.227.268	q4	
164.676	254.085	79.078	376.402	424.808	5.263.184	q1	2013
163.788	255.289	78.629	378.627	391.970	5.496.312	q2	
162.620	259.040	78.174	378.137	400.092	5.528.036	q3	
163.544	255.146	78.842	380.816	513.610	5.743.412	q4	

7. KVARTALNI IZDACI ZA KRAJNJU POTROŠNJU DOMAĆINSTAVA, DOMAĆI KONCEPT ¹⁾, SEZONSKI PODEŠENE LANČANO POVEZANE VRIJEDNOSTI U CIJENAMA 2010. (Stope realnog rasta Q/Q-1)

7. QUARTERLY HOUSEHOLD FINAL CONSUMPTION EXPENDITURE, DOMESTIC CONCEPT ¹⁾, SEASONALY ADJUSTED DATA, CHAIN LINKED AT PRICES 2010 (Real growth rate Q/Q-1)

Godina / Year		01 Hrana i bezalkoholna pića / Food and non-alcoholic bev.	02 Alkoholna pića, duhan i narkotici / Alcoholic beverages; tobacco and narcotics	03 Odjeća i obuća / Clothing and footwear	04 Stanovanje, voda, el. en.; plin i ostala goriva / Housing, water, electricity, gas and other fuels	05 Pokućstvo i rutinsko održavanje stana / Furnishing, household equip. and routine household maint.	06 Zdravstvo / Health	07 Transport / Transport
1	2	3	4	5	6	7	8	
2008	q1							
	q2	3,49	0,07	7,16	-0,36	24,44	-1,54	-3,06
	q3	2,87	0,11	1,97	-1,61	-0,89	-0,93	5,53
	q4	1,58	0,15	-4,45	5,52	-3,44	2,40	0,42
2009	q1	-2,34	0,20	-6,30	-2,58	-18,36	-0,49	-3,28
	q2	-0,23	0,15	-0,91	-1,64	-1,08	-0,57	1,97
	q3	-1,36	0,08	-4,43	1,48	-1,59	-1,02	-4,93
	q4	-1,40	-0,01	-3,40	-2,08	-4,96	1,12	1,37
2010	q1	1,04	-0,04	10,72	0,26	-16,73	-3,55	3,25
	q2	-1,89	-0,08	-5,74	-0,57	12,38	-0,20	-2,71
	q3	-1,86	-0,04	4,50	3,17	22,54	-1,40	7,46
	q4	0,08	-0,04	-1,11	-1,82	13,70	-5,82	2,26
2011	q1	0,51	-0,03	0,89	1,96	-25,50	-1,21	-0,42
	q2	-1,61	-0,02	7,69	0,65	11,32	-3,03	-1,00
	q3	1,07	-0,09	-7,55	-4,15	9,38	-0,70	0,87
	q4	-0,79	-0,08	2,44	-0,20	-25,75	0,87	-5,94
2012	q1	-0,82	-0,08	-0,72	1,84	40,99	1,66	1,26
	q2	-0,59	-0,03	-8,32	0,65	-13,80	2,47	3,24
	q3	-1,21	0,10	3,78	1,20	-10,05	0,54	-5,15
	q4	-1,04	0,19	4,47	-3,88	-7,02	-0,46	-2,29
2013	q1	-0,06	0,17	0,93	-0,61	-14,47	0,61	0,93
	q2	3,08	0,21	4,76	0,68	28,88	-0,88	2,41
	q3	2,87	0,14	6,12	-0,55	20,47	-0,27	-2,41
	q4	4,15	0,10	6,31	2,13	3,44	-1,63	5,22

1) Domaći koncept ne uključuje neto kupovine u inostranstvu / Domestic concept does not include net purchases abroad

08 Komunikacije <i>/Communication</i>	09 Rekreacija i kultura / <i>Recreation and culture</i>	10 Obrazovanje / <i>Education</i>	11 Restorani i hoteli / <i>Restaurants and hotels</i>	12 Ostala dobra i usluge / <i>Miscellaneous goods and services</i>	Izdaci za krajnju potrošnju domaćinstava - domaći koncept / <i>Household final consumption expenditure - domestic concept</i>	Godina / Year
9	10	11	12	13		14
0,06	-1,98	0,40	-1,45	-0,03	4,07	q1
-0,03	-5,32	1,30	-1,61	9,35	0,96	q2
-2,60	-1,75	-0,27	-2,65	8,83	3,55	q3
						q4
0,32	-6,16	1,29	-1,25	-3,13	-6,09	q1
1,64	-3,83	-0,14	-2,57	-5,07	-1,30	q2
-1,45	0,39	-0,16	-1,58	-7,38	-2,05	q3
-0,19	-4,74	-0,64	2,27	-0,01	0,14	q4
-0,37	0,40	-1,41	0,69	21,03	2,40	q1
1,45	1,99	0,11	3,11	-13,29	-3,84	q2
-0,31	0,07	0,49	1,32	-11,11	1,61	q3
-0,10	1,50	1,50	0,68	14,75	2,13	q4
2,64	2,17	1,93	0,33	19,66	1,03	q1
-0,82	-0,55	1,57	-0,43	-6,01	-1,23	q2
0,96	1,97	0,81	0,75	-11,68	-0,16	q3
-0,27	1,73	0,76	-0,45	-24,27	-3,96	q4
0,56	-1,01	0,14	-0,28	37,57	4,66	q1
-0,95	-1,68	0,02	-0,92	-9,50	-1,11	q2
-0,15	-3,30	-0,47	0,03	15,78	-0,15	q3
-0,19	0,74	-0,79	-1,22	-10,40	-4,66	q4
0,06	1,36	-0,95	0,05	4,38	0,69	q1
-0,54	0,47	-0,57	0,59	-7,73	4,43	q2
-0,71	1,47	-0,58	-0,13	2,07	0,58	q3
0,57	-1,50	0,86	0,71	28,37	3,90	q4

